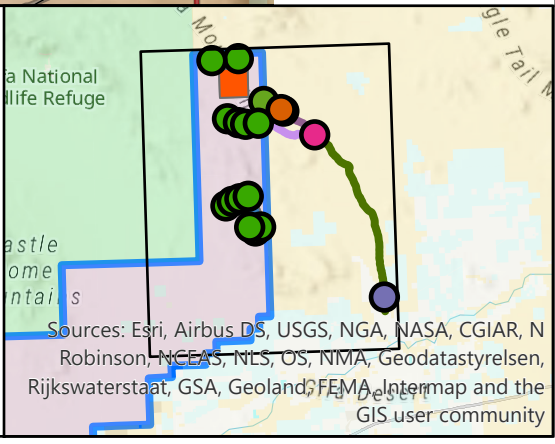


# Proposed East Arm Impact Areas



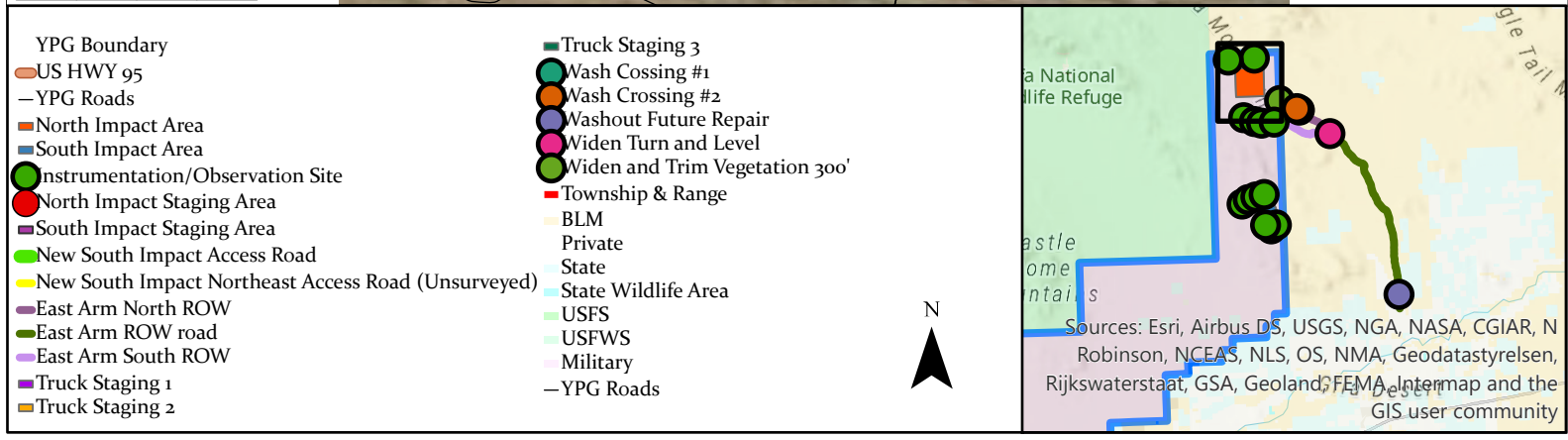
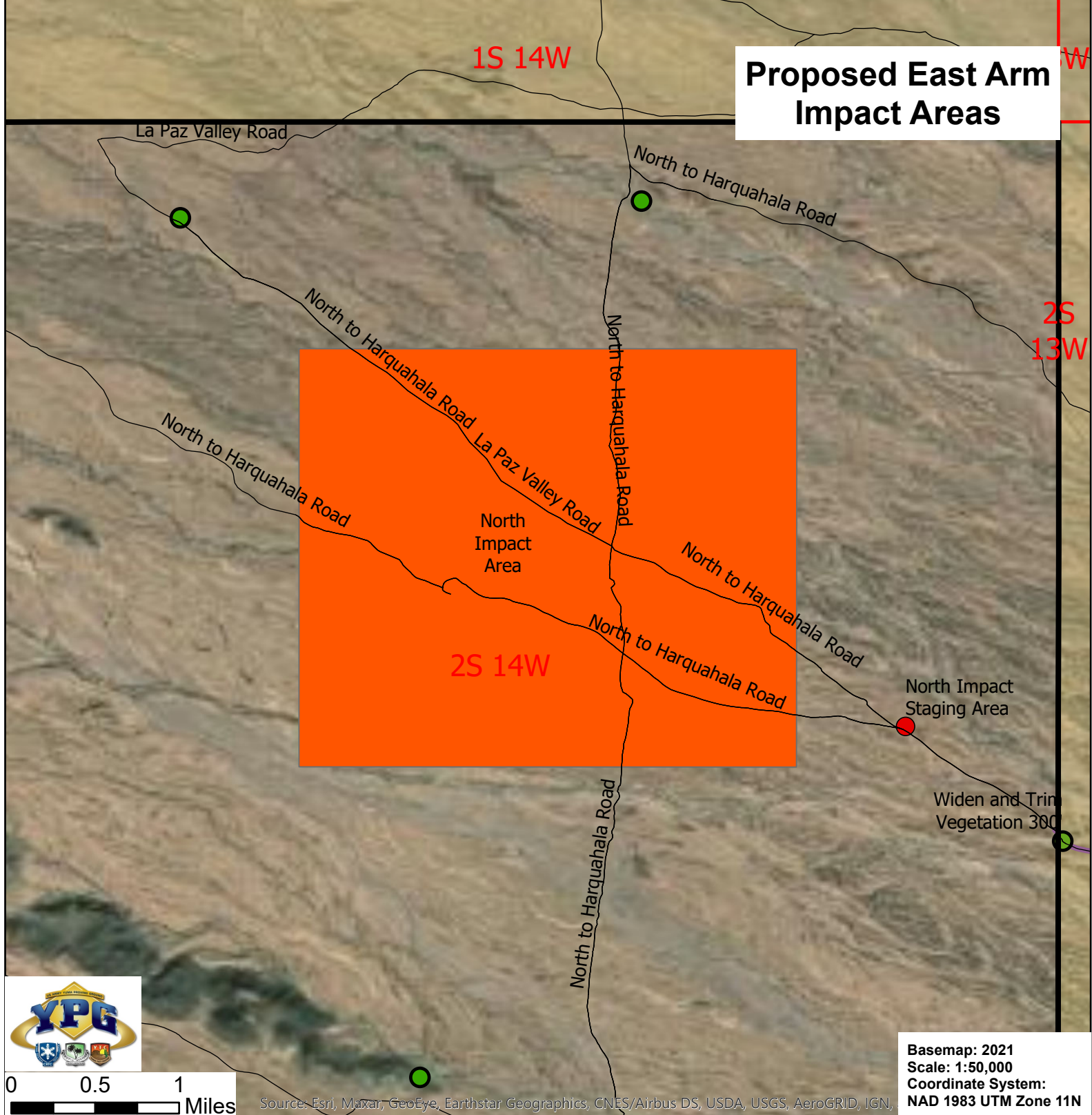
Basemap: 2021  
 Scale: 1:200,000  
 Coordinate System:  
 NAD 1983 UTM Zone 11N

- |   |  |
|---|--|
| YPG Boundary<br>US HWY 95<br>YPG Roads<br>North Impact Area<br>South Impact Area<br>Instrumentation/Observation Site<br>North Impact Staging Area<br>South Impact Staging Area<br>New South Impact Access Road<br>New South Impact Northeast Access Road (Unsurveyed)<br>East Arm North ROW<br>East Arm ROW road<br>East Arm South ROW<br>Truck Staging 1 | Truck Staging 2<br>Truck Staging 3<br>Wash Crossing #1<br>Wash Crossing #2<br>Washout Future Repair<br>Widen Turn and Level<br>Widen and Trim Vegetation 300'<br>Township & Range<br>BLM<br>Private<br>State<br>State Wildlife Area<br>USFS<br>USFWS<br>Military |
|---|--|



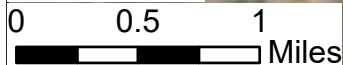
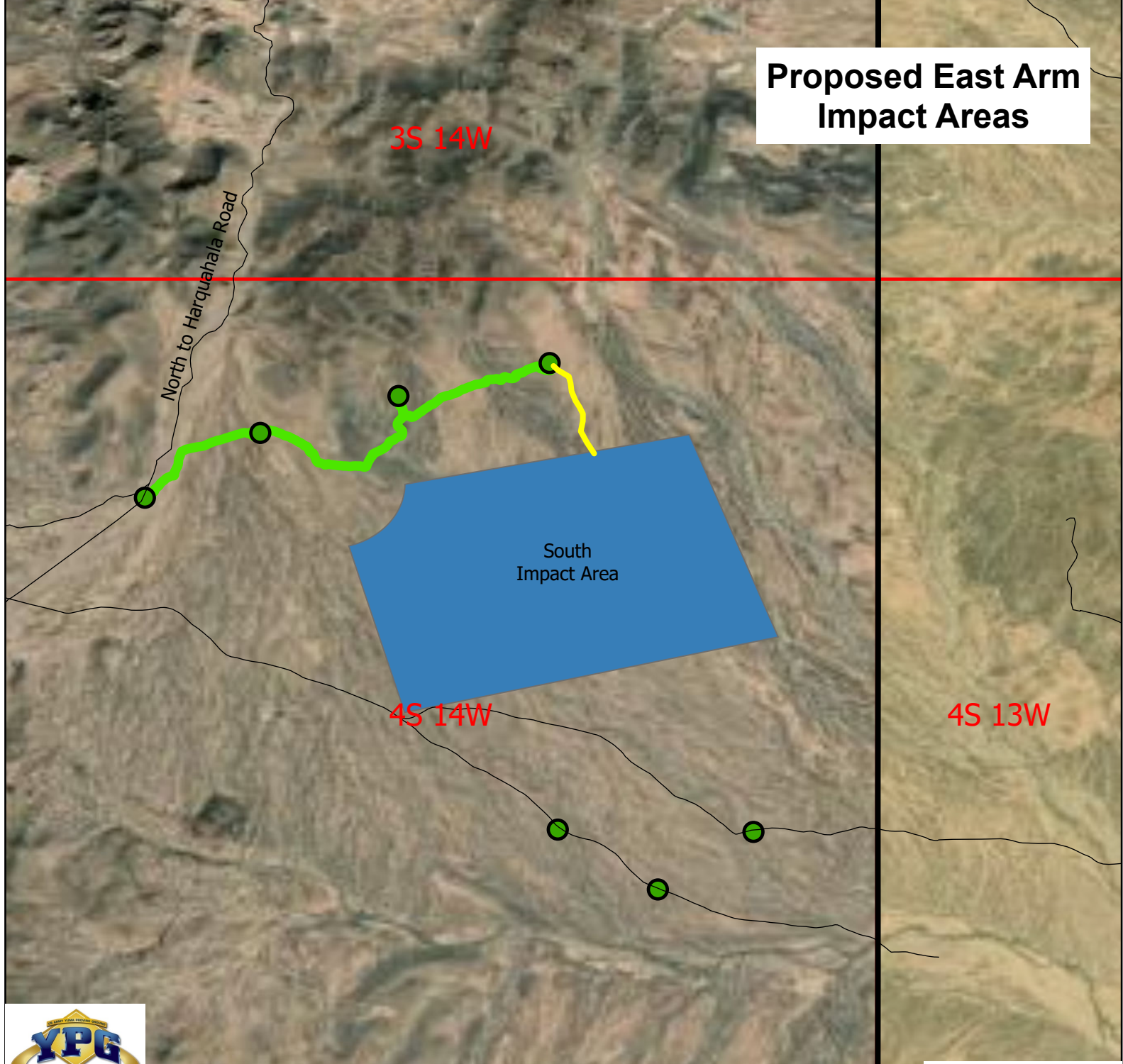
Sources: Esri, Airbus DS, USGS, NGA, NASA, CGIAR, N  
 Robinson, NCEAS, NLS, OS, NMA, Geodatastyrelsen,  
 Rijkswaterstaat, GSA, Geoland, FEMA, Intermap and the  
 GIS user community

# Proposed East Arm Impact Areas





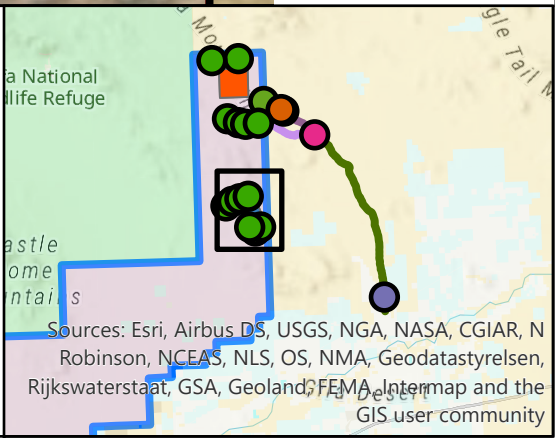
# Proposed East Arm Impact Areas



Source: Esri, Maxar, GeoEye, Earthstar Geographics, CNES/Airbus DS, USDA, USGS, AeroGRID, IGN, and the GIS user community

Basemap: 2021  
Scale: 1:50,000  
Coordinate System:  
NAD 1983 UTM Zone 11N

- |  |  |
|--|--|
| <ul style="list-style-type: none"> <li>YPG Boundary</li> <li>US HWY 95</li> <li>YPG Roads</li> <li>North Impact Area</li> <li>South Impact Area</li> <li>Instrumentation/Observation Site</li> <li>North Impact Staging Area</li> <li>South Impact Staging Area</li> <li>New South Impact Access Road</li> <li>New South Impact Northeast Access Road (Unsurveyed)</li> <li>East Arm North ROW</li> <li>East Arm ROW road</li> <li>East Arm South ROW</li> <li>Truck Staging 1</li> <li>Truck Staging 2</li> </ul> | <ul style="list-style-type: none"> <li>Truck Staging 3</li> <li>Wash Crossing #1</li> <li>Wash Crossing #2</li> <li>Washout Future Repair</li> <li>Widen Turn and Level</li> <li>Widen and Trim Vegetation 300'</li> <li>Township &amp; Range</li> <li>BLM</li> <li>Private</li> <li>State</li> <li>State Wildlife Area</li> <li>USFS</li> <li>USFWS</li> <li>Military</li> <li>YPG Roads</li> </ul> |
|--|--|



Sources: Esri, Airbus DS, USGS, NGA, NASA, CGIAR, N Robinson, NCEAS, NLS, OS, NMA, Geodatastyrelsen, Rijkswaterstaat, GSA, Geoland, FEMA, Intermap and the GIS user community



# Observation/Instrumentation Sites

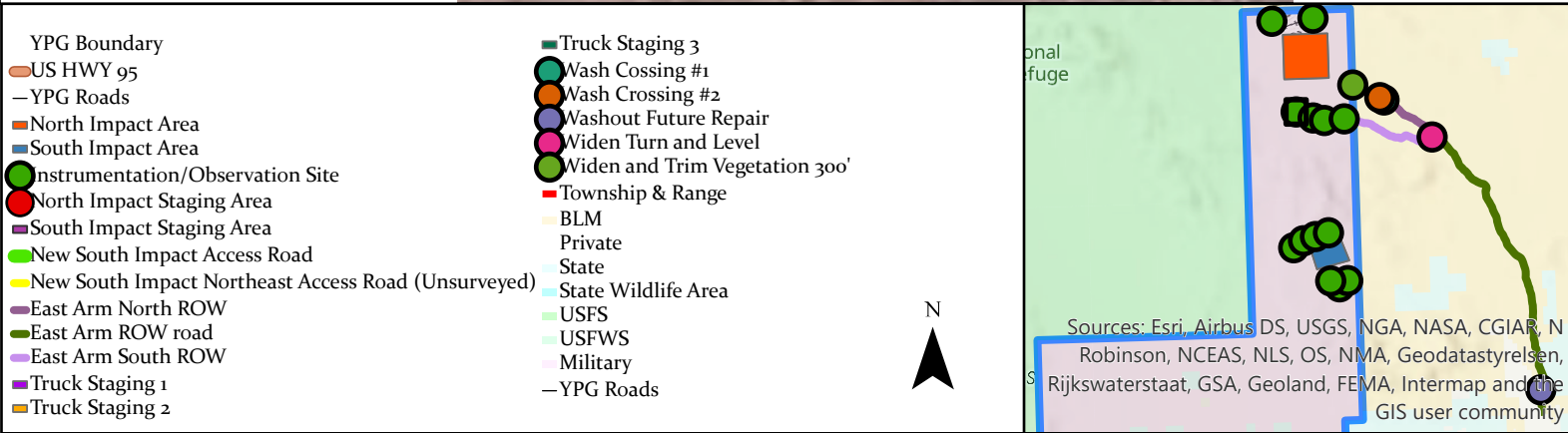
2S 14W



3S 14W

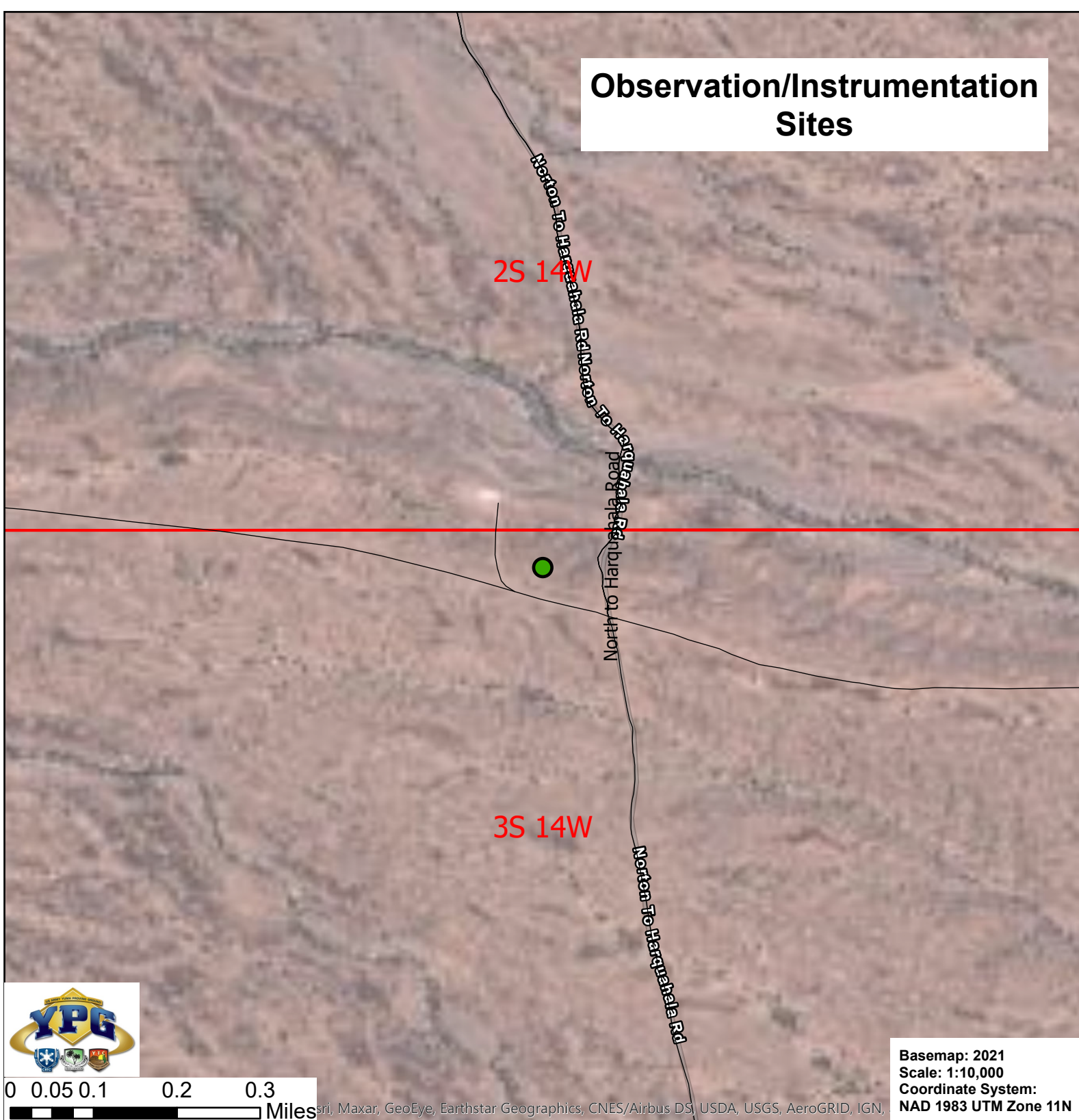


Basemap: 2021  
Scale: 1:10,000  
Coordinate System:  
NAD 1983 UTM Zone 11N



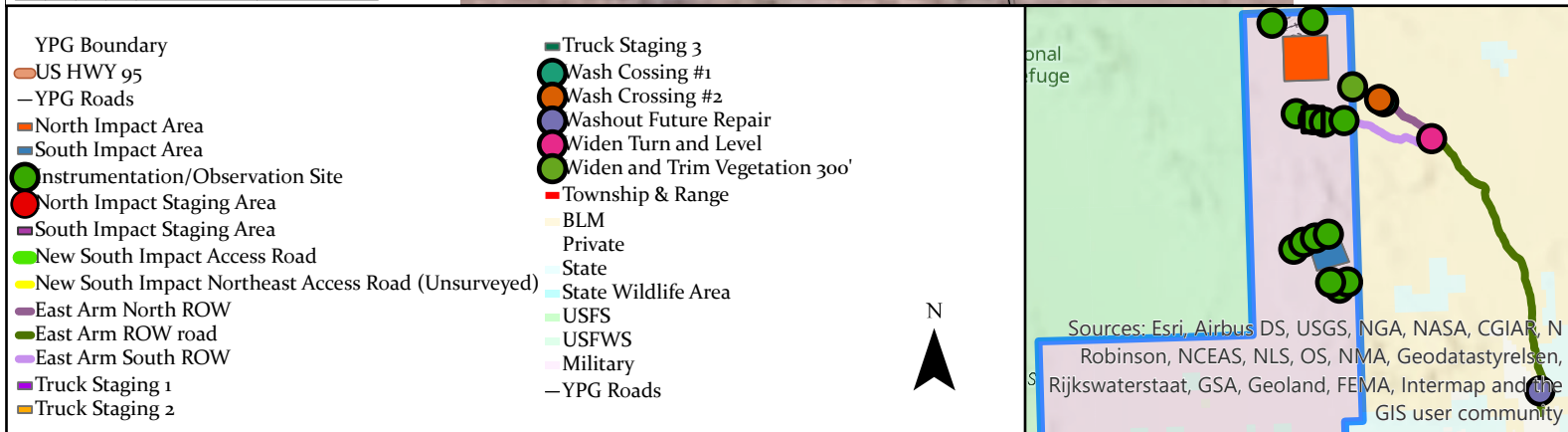


# Observation/Instrumentation Sites



0 0.05 0.1 0.2 0.3 Miles

Basemap: 2021  
Scale: 1:10,000  
Coordinate System:  
NAD 1983 UTM Zone 11N



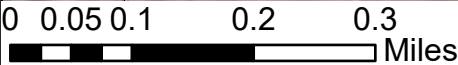


# Observation/Instrumentation Sites

2S 14W

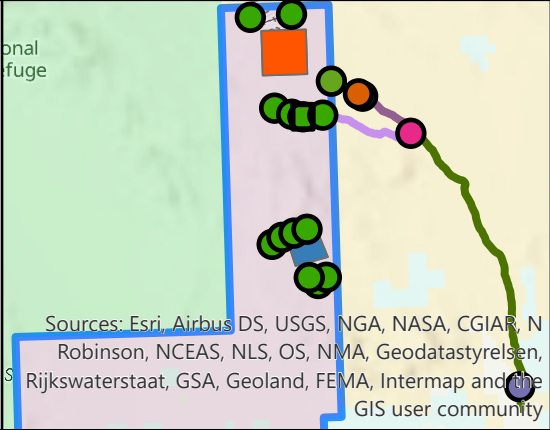
3S 14W

Northern Highway Road



Basemap: 2021  
Scale: 1:10,000  
Coordinate System:  
NAD 1983 UTM Zone 11N

- YPG Boundary
- US HWY 95
- YPG Roads
- North Impact Area
- South Impact Area
- Instrumentation/Observation Site
- North Impact Staging Area
- South Impact Staging Area
- New South Impact Access Road
- New South Impact Northeast Access Road (Unsurveyed)
- East Arm North ROW
- East Arm ROW road
- East Arm South ROW
- Truck Staging 1
- Truck Staging 2
- Truck Staging 3
- Wash Crossing #1
- Wash Crossing #2
- Washout Future Repair
- Widen Turn and Level
- Widen and Trim Vegetation 300'
- Township & Range
- BLM
- Private
- State
- State Wildlife Area
- USFS
- USFWS
- Military
- YPG Roads



Sources: Esri, Airbus DS, USGS, NGA, NASA, CGIAR, N Robinson, NCEAS, NLS, OS, NMA, Geodatastyrelsen, Rijkswaterstaat, GSA, Geoland, FEMA, Intermap and the GIS user community



# Observation/Instrumentation Sites

2S 14W

2S 13W

3S 14W

3S 13W

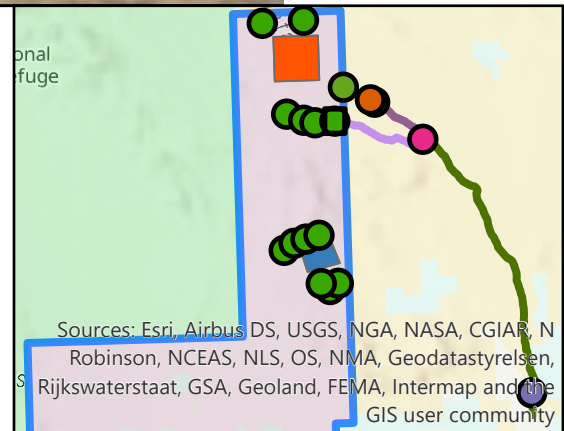


0 0.05 0.1 0.2 0.3

Miles

Basemap: 2021  
Scale: 1:10,000  
Coordinate System:  
NAD 1983 UTM Zone 11N

- YPG Boundary
- US HWY 95
- YPG Roads
- North Impact Area
- South Impact Area
- Instrumentation/Observation Site
- North Impact Staging Area
- South Impact Staging Area
- New South Impact Access Road
- New South Impact Northeast Access Road (Unsurveyed)
- East Arm North ROW
- East Arm ROW road
- East Arm South ROW
- Truck Staging 1
- Truck Staging 2
- Truck Staging 3
- Wash Crossing #1
- Wash Crossing #2
- Washout Future Repair
- Widen Turn and Level
- Widen and Trim Vegetation 300'
- Township & Range
- BLM
- Private
- State
- State Wildlife Area
- USFS
- USFWS
- Military
- YPG Roads



Sources: Esri, Airbus DS, USGS, NGA, NASA, CGIAR, N Robinson, NCEAS, NLS, OS, NMA, Geodatastyrelsen, Rijkswaterstaat, GSA, Geoland, FEMA, Intermap and the GIS user community



1S 14W

## Observation/Instrumentation Sites

North To Harquahala Rd

2S 14W

North To Harquahala Rd



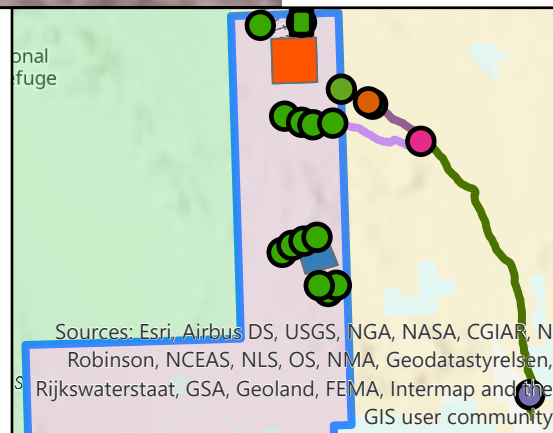
0 0.05 0.1 0.2 0.3

Miles

Basemap: 2021  
Scale: 1:10,000  
Coordinate System:  
NAD 1983 UTM Zone 11N

Sources: Esri, Maxar, GeoEye, Earthstar Geographics, CNES/Airbus DS, USDA, USGS, AeroGRID, IGN,

- YPG Boundary
- US HWY 95
- YPG Roads
- North Impact Area
- South Impact Area
- Instrumentation/Observation Site
- North Impact Staging Area
- South Impact Staging Area
- New South Impact Access Road
- New South Impact Northeast Access Road (Unsurveyed)
- East Arm North ROW
- East Arm ROW road
- East Arm South ROW
- Truck Staging 1
- Truck Staging 2
- Truck Staging 3
- Wash Crossing #1
- Wash Crossing #2
- Washout Future Repair
- Widen Turn and Level
- Widen and Trim Vegetation 300'
- Township & Range
- BLM
- Private
- State
- State Wildlife Area
- USFS
- USFWS
- Military
- YPG Roads



Sources: Esri, Airbus DS, USGS, NGA, NASA, CGIAR, N Robinson, NCEAS, NLS, OS, NMA, Geodatastyrelsen, Rijkswaterstaat, GSA, Geoland, FEMA, Intermap and the GIS user community



1S 14W

## Observation/Instrumentation Sites

La Paz Valley Road

2S 14W

North to Harquahala Road La Paz Valley Road

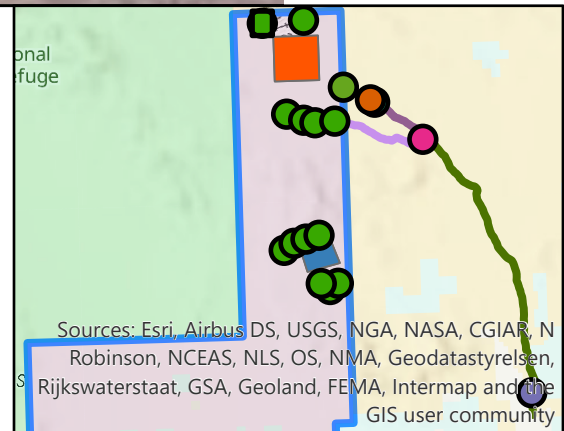


0 0.05 0.1 0.2 0.3

Miles

Basemap: 2021  
Scale: 1:10,000  
Coordinate System:  
NAD 1983 UTM Zone 11N

- YPG Boundary
- US HWY 95
- YPG Roads
- North Impact Area
- South Impact Area
- Instrumentation/Observation Site
- North Impact Staging Area
- South Impact Staging Area
- New South Impact Access Road
- New South Impact Northeast Access Road (Unsurveyed)
- East Arm North ROW
- East Arm ROW road
- East Arm South ROW
- Truck Staging 1
- Truck Staging 2
- Truck Staging 3
- Wash Crossing #1
- Wash Crossing #2
- Washout Future Repair
- Widen Turn and Level
- Widen and Trim Vegetation 300'
- Township & Range
- BLM
- Private
- State
- State Wildlife Area
- USFS
- USFWS
- Military
- YPG Roads



Sources: Esri, Airbus DS, USGS, NGA, NASA, CGIAR, N Robinson, NCEAS, NLS, OS, NMA, Geodatastyrelsen, Rijkswaterstaat, GSA, Geoland, FEMA, Intermap and the GIS user community



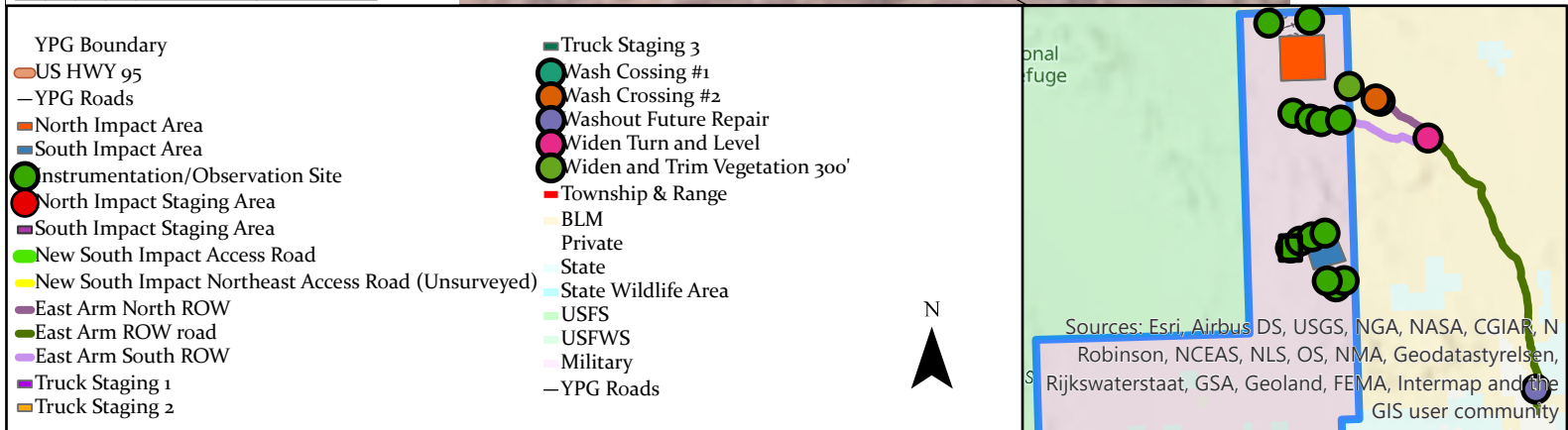
# Observation/Instrumentation Sites



0 0.05 0.1 0.2 0.3 Miles

Sources: Esri, Maxar, GeoEye, Earthstar-Geographics, CNES/Airbus DS, USDA, USGS, AeroGRID, IGN, S

Basemap: 2021  
Scale: 1:10,000  
Coordinate System:  
NAD 1983 UTM Zone 11N





# Observation/Instrumentation Sites

North to Harquahala Road

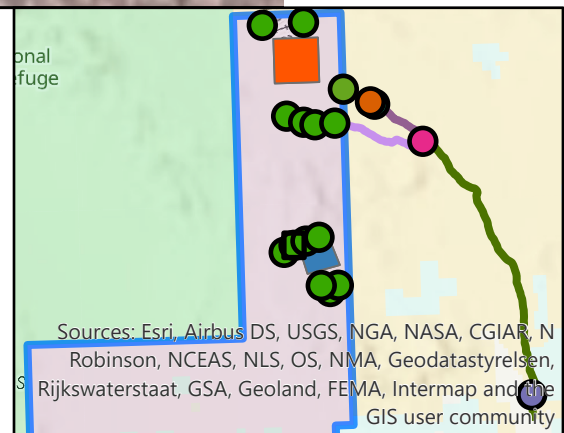


0 0.05 0.1 0.2 0.3 Miles

Sources: Esri, Maxar, GeoEye, Earthstar Geographics, CNES/Airbus DS, USDA, USGS, AeroGRID, IGN, S

Basemap: 2021  
Scale: 1:10,000  
Coordinate System:  
NAD 1983 UTM Zone 11N

- YPG Boundary
- US HWY 95
- YPG Roads
- North Impact Area
- South Impact Area
- Instrumentation/Observation Site
- North Impact Staging Area
- South Impact Staging Area
- New South Impact Access Road
- New South Impact Northeast Access Road (Unsurveyed)
- East Arm North ROW
- East Arm ROW road
- East Arm South ROW
- Truck Staging 1
- Truck Staging 2
- Truck Staging 3
- Wash Crossing #1
- Wash Crossing #2
- Washout Future Repair
- Widen Turn and Level
- Widen and Trim Vegetation 300'
- Township & Range
- BLM
- Private
- State
- State Wildlife Area
- USFS
- USFWS
- Military
- YPG Roads



Sources: Esri, Airbus DS, USGS, NGA, NASA, CGIAR, N Robinson, NCEAS, NLS, OS, NMA, Geodatastyrelsen, Rijkswaterstaat, GSA, Geoland, FEMA, Intermap and the GIS user community



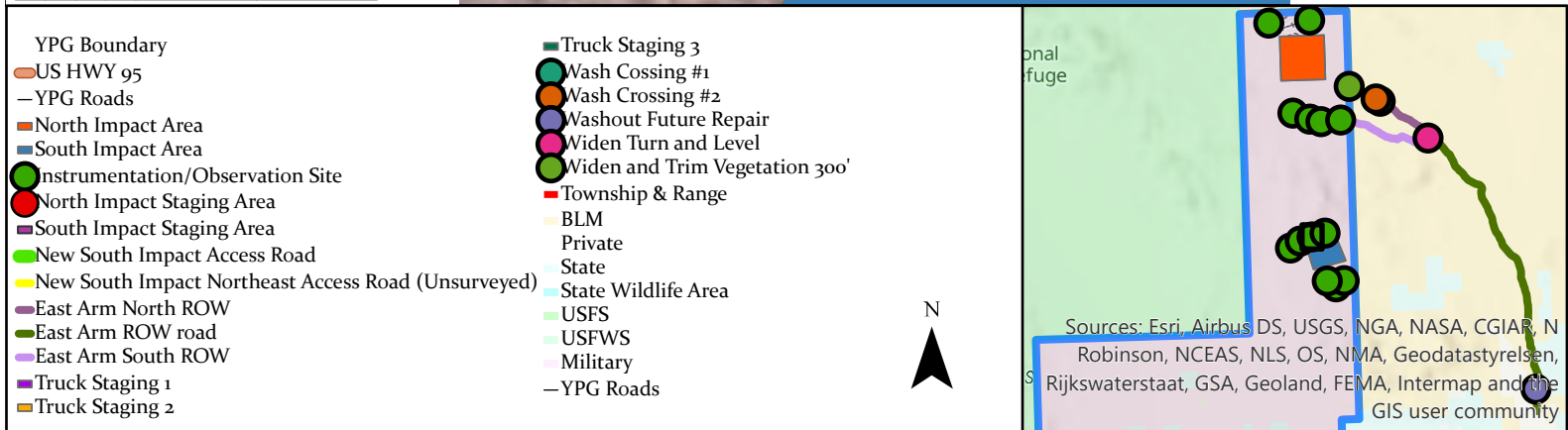
# Observation/Instrumentation Sites



0 0.05 0.1 0.2 0.3 Miles

South Impact Area

Basemap: 2021  
Scale: 1:10,000  
Coordinate System:  
NAD 1983 UTM Zone 11N





# 3S 14W Observation/Instrumentation Sites

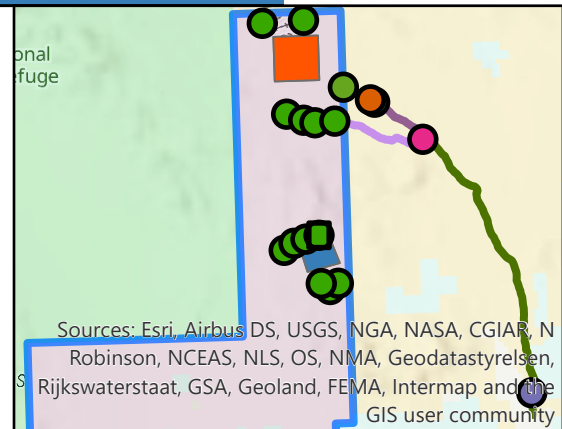


0 0.05 0.1 0.2 0.3

Miles

Basemap: 2021  
Scale: 1:10,000  
Coordinate System:  
NAD 1983 UTM Zone 11N

- YPG Boundary
- US HWY 95
- YPG Roads
- North Impact Area
- South Impact Area
- Instrumentation/Observation Site
- North Impact Staging Area
- South Impact Staging Area
- New South Impact Access Road
- New South Impact Northeast Access Road (Unsurveyed)
- East Arm North ROW
- East Arm ROW road
- East Arm South ROW
- Truck Staging 1
- Truck Staging 2
- Truck Staging 3
- Wash Crossing #1
- Wash Crossing #2
- Washout Future Repair
- Widen Turn and Level
- Widen and Trim Vegetation 300'
- Township & Range
- BLM
- Private
- State
- State Wildlife Area
- USFS
- USFWS
- Military
- YPG Roads



Sources: Esri, Airbus DS, USGS, NGA, NASA, CGIAR, N Robinson, NCEAS, NLS, OS, NMA, Geodatastyrelsen, Rijkswaterstaat, GSA, Geoland, FEMA, Intermap and the GIS user community



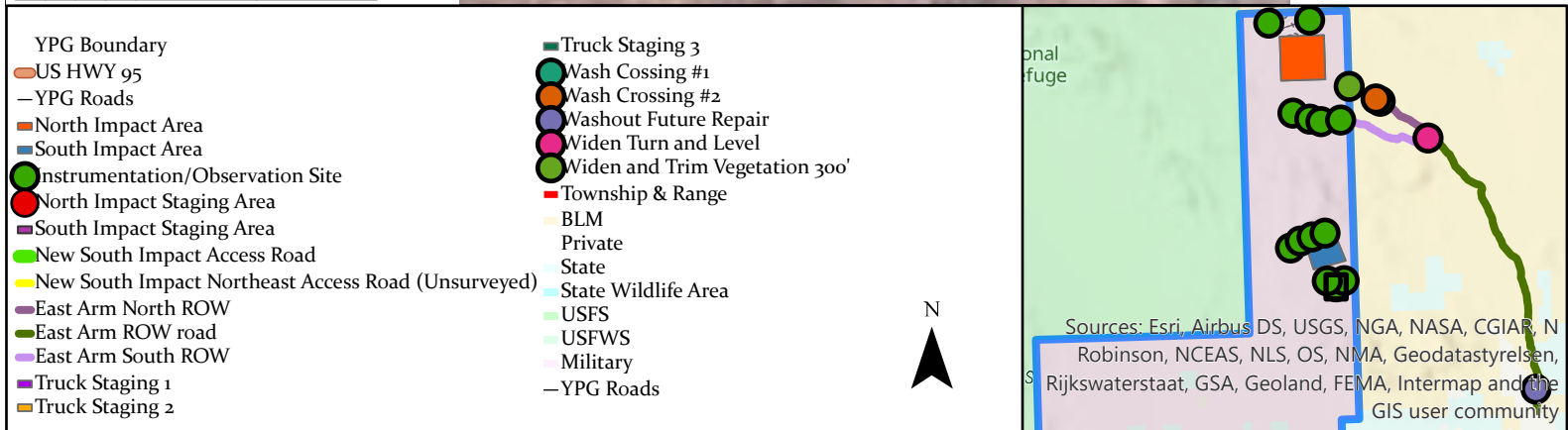
# Observation/Instrumentation Sites



0 0.05 0.1 0.2 0.3 Miles

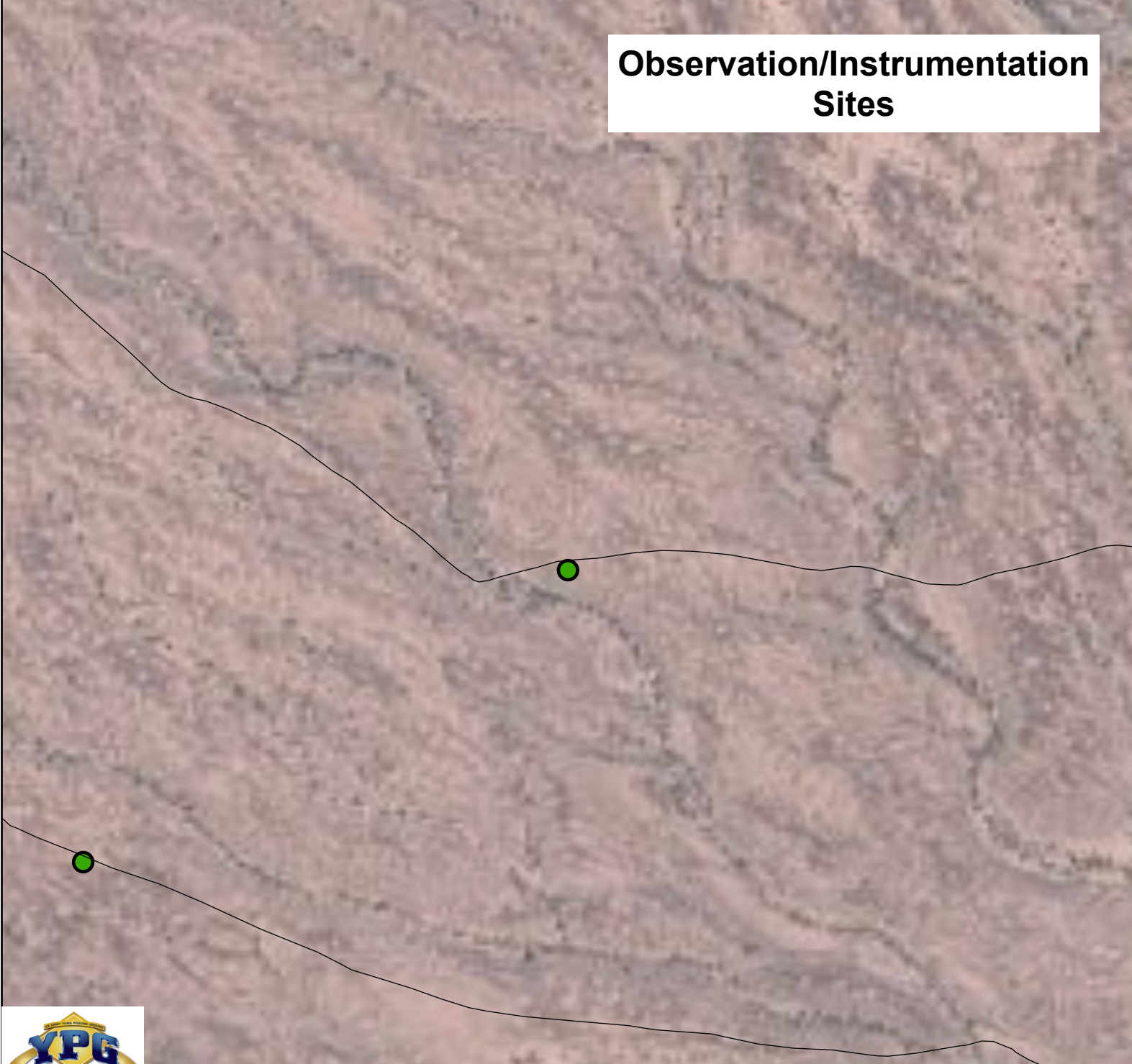
Sources: Esri, Maxar, GeoEye, Earthstar Geographics, CNES/Airbus DS, USDA, USGS, AeroGRID, IGN,

Basemap: 2021  
Scale: 1:10,000  
Coordinate System:  
NAD 1983 UTM Zone 11N





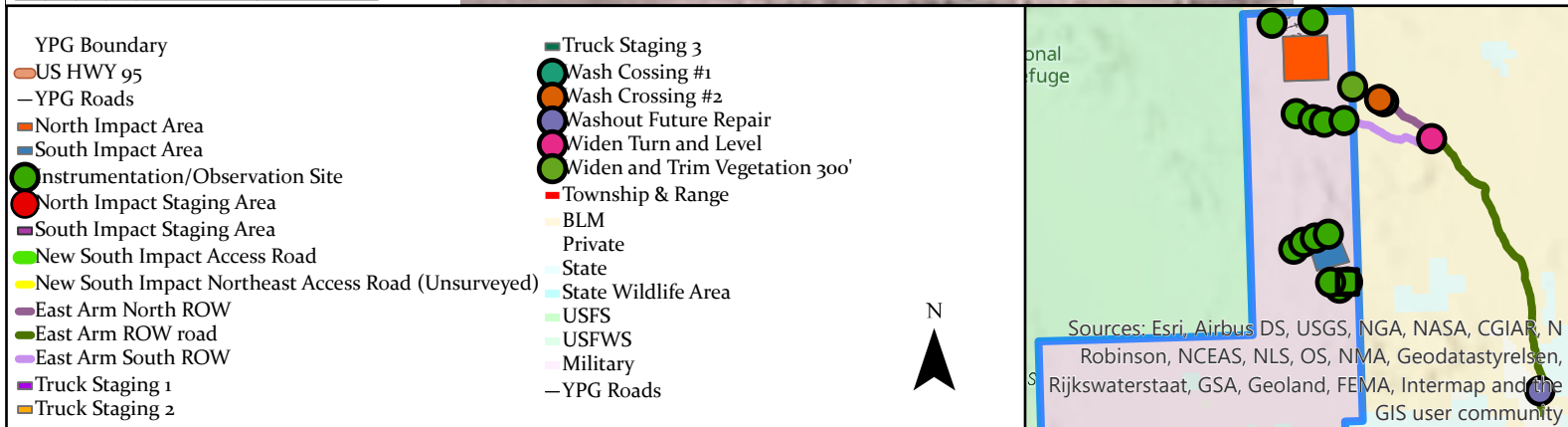
# Observation/Instrumentation Sites



0 0.05 0.1 0.2 0.3 Miles

Basemap: 2021  
Scale: 1:10,000  
Coordinate System:  
NAD 1983 UTM Zone 11N

Sources: Esri, Maxar, GeoEye, Earthstar Geographics, CNES/Airbus DS, USDA, USGS, AeroGRID, IGN



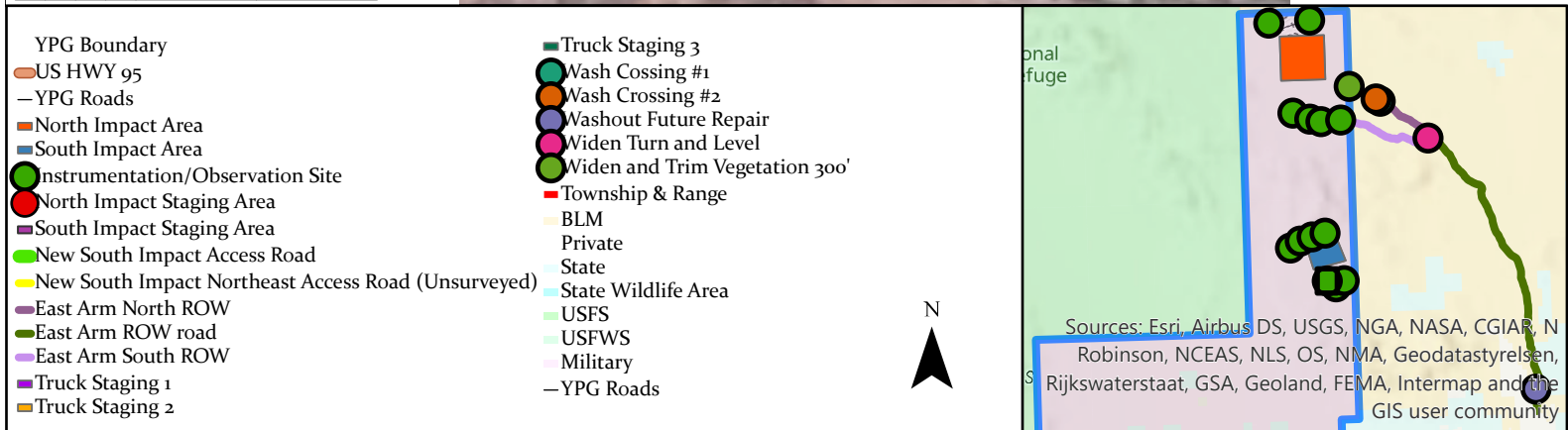


# Observation/Instrumentation Sites



0 0.05 0.1 0.2 0.3 Miles

Basemap: 2021  
Scale: 1:10,000  
Coordinate System:  
NAD 1983 UTM Zone 11N





# North Impact Staging Area

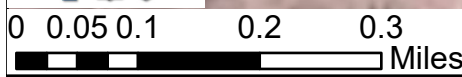
North to Harquahala Road

North to Harquahala Road

North Impact Staging Area

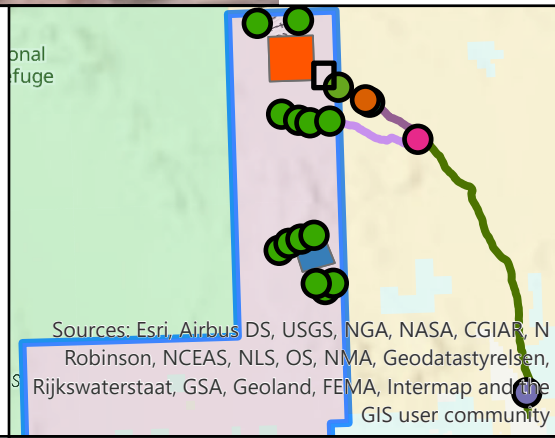
Hoodoo Wash

Hoodoo Wash



Basemap: 2021  
Scale: 1:10,000  
Coordinate System:  
NAD 1983 UTM Zone 11N

- |   |  |
|---|--|
| <ul style="list-style-type: none"> <li>YPG Boundary</li> <li>US HWY 95</li> <li>YPG Roads</li> <li>North Impact Area</li> <li>South Impact Area</li> <li>Instrumentation/Observation Site</li> <li>North Impact Staging Area</li> <li>South Impact Staging Area</li> <li>New South Impact Access Road</li> <li>New South Impact Northeast Access Road (Unsurveyed)</li> <li>East Arm North ROW</li> <li>East Arm ROW road</li> <li>East Arm South ROW</li> <li>Truck Staging 1</li> </ul> | <ul style="list-style-type: none"> <li>Truck Staging 2</li> <li>Truck Staging 3</li> <li>Wash Crossing #1</li> <li>Wash Crossing #2</li> <li>Washout Future Repair</li> <li>Widen Turn and Level</li> <li>Widen and Trim Vegetation 300'</li> <li>Township &amp; Range</li> <li>BLM</li> <li>Private</li> <li>State</li> <li>State Wildlife Area</li> <li>USFS</li> <li>USFWS</li> <li>Military</li> </ul> |
|---|--|



Sources: Esri, Airbus DS, USGS, NGA, NASA, CGIAR, N Robinson, NCEAS, NLS, OS, NMA, Geodatastyrelsen, Rijkswaterstaat, GSA, Geoland, FEMA, Intermap and the GIS user community

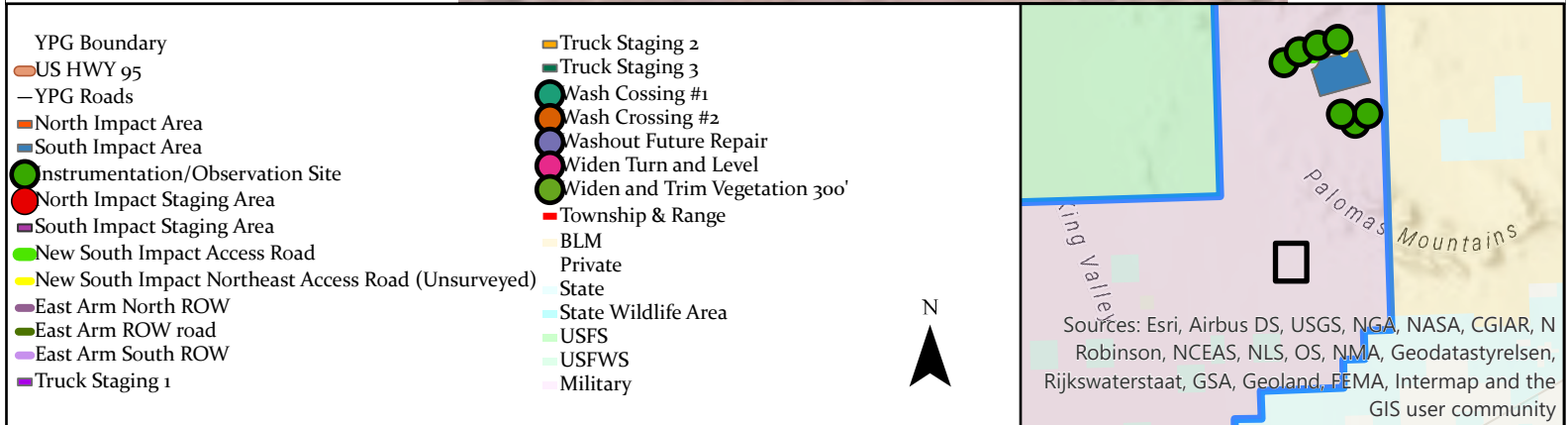


# South Impact Staging Area



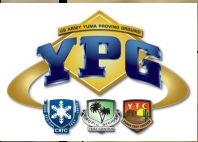
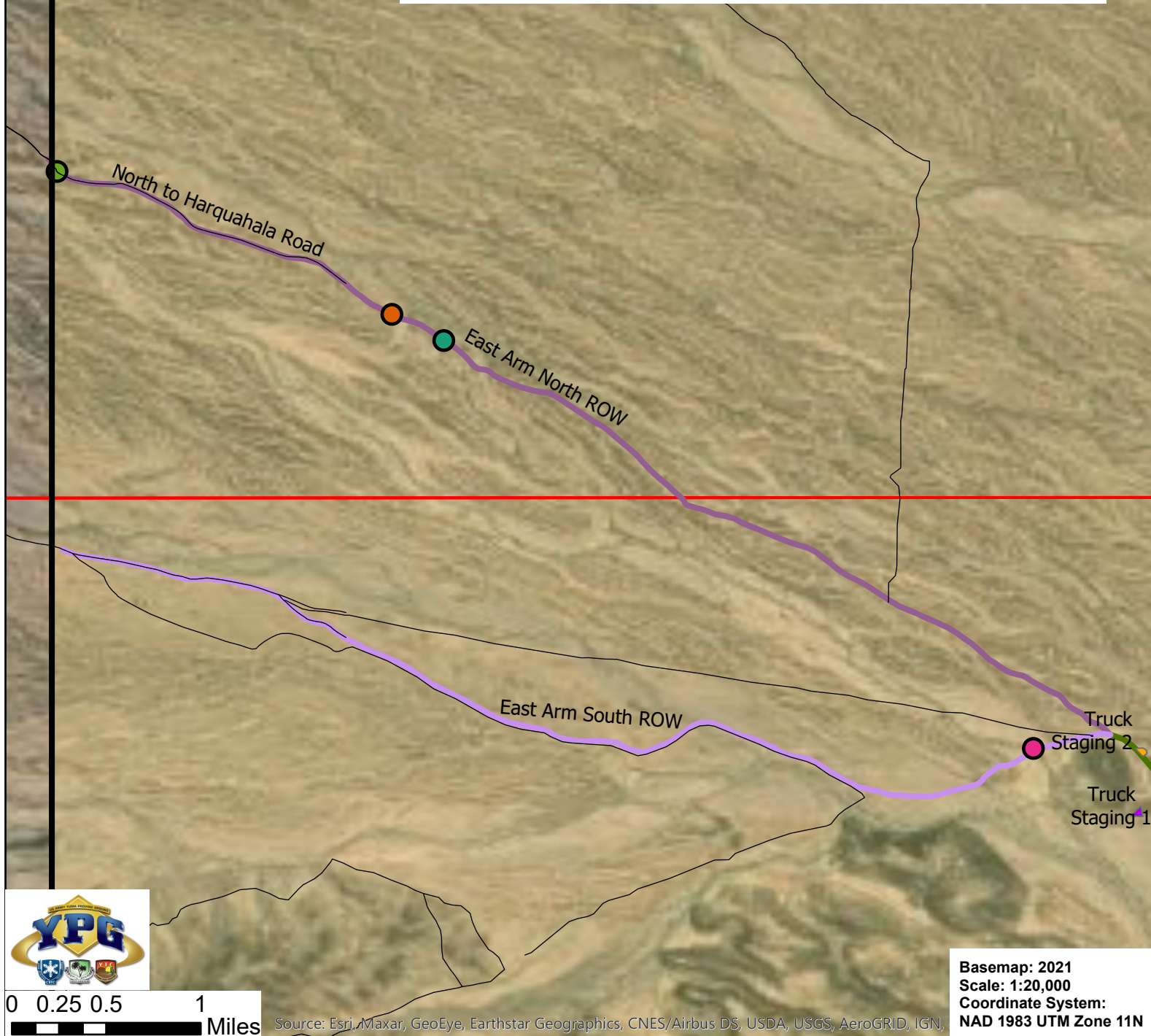
0 0.05 0.1 0.2 0.3 Miles

Basemap: 2021  
Scale: 1:10,000  
Coordinate System:  
NAD 1983 UTM Zone 11N



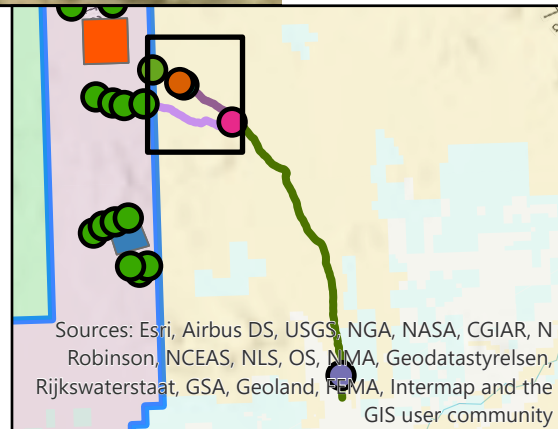


# Bureau of Land Management (BLM) Right-of-Way Road



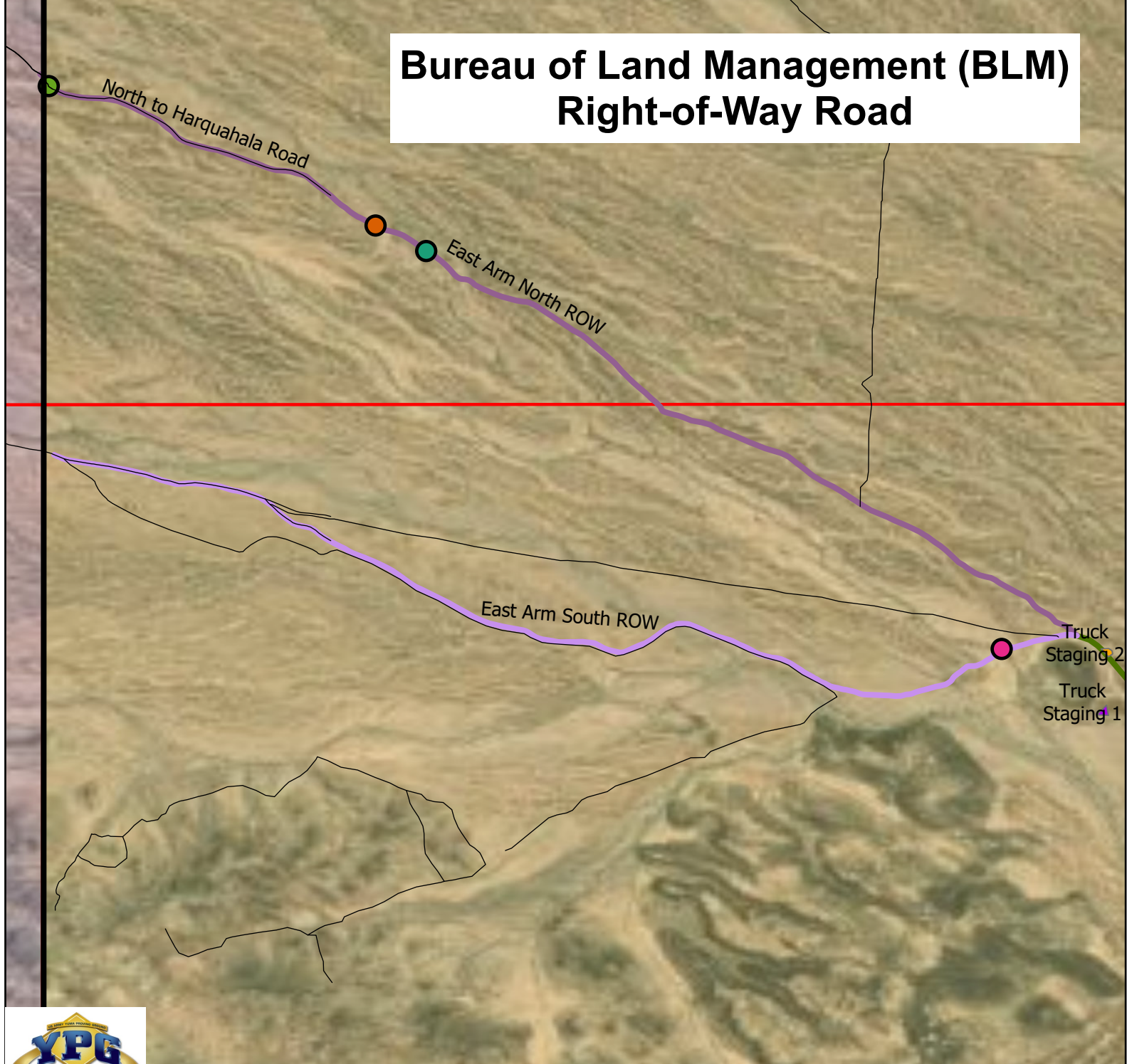
Source: Esri, Maxar, GeoEye, Earthstar Geographics, CNES/Airbus DS, USDA, USGS, AeroGRID, IGN,

- YPG Boundary
- US HWY 95
- YPG Roads
- North Impact Area
- South Impact Area
- Instrumentation/Observation Site
- North Impact Staging Area
- South Impact Staging Area
- New South Impact Access Road
- New South Impact Northeast Access Road (Unsurveyed)
- East Arm North ROW
- East Arm ROW road
- East Arm South ROW
- Truck Staging 1
- Truck Staging 2
- Truck Staging 3
- Wash Crossing #1
- Wash Crossing #2
- Washout Future Repair
- Widen Turn and Level
- Widen and Trim Vegetation 300'
- Township & Range
- BLM
- Private
- State
- State Wildlife Area
- USFS
- USFWS
- Military





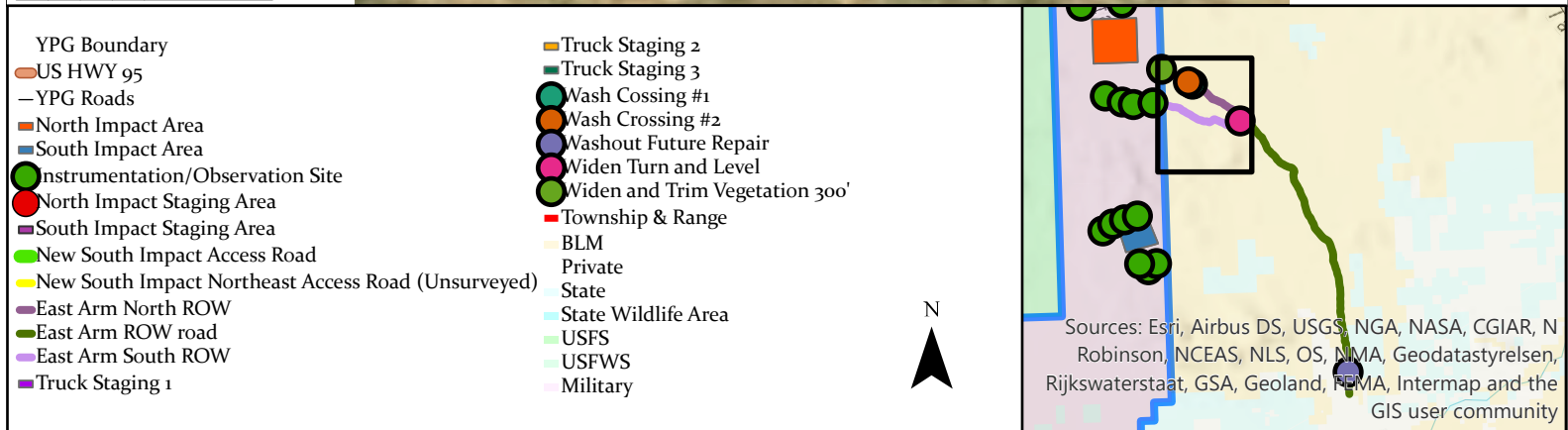
# Bureau of Land Management (BLM) Right-of-Way Road



0 0.25 0.5 1  
Miles

Source: Esri, Maxar, GeoEye, Earthstar Geographics, CNES/Airbus DS, USDA, USGS, AeroGRID, IGN,

Basemap: 2021  
Scale: 1:20,000  
Coordinate System:  
NAD 1983 UTM Zone 11N





# Bureau of Land Management (BLM) Right-of-Way Road

East Arm ROW road

Truck  
Staging 3



**Basemap: 2021**  
**Scale: 1:20,000**  
**Coordinate System:**  
**NAD 1983 UTM Zone 11N**

0 0.25 0.5 1 Miles

Source: Esri, Maxar, GeoEye, Earthstar Geographics, CNES/Airbus DS, USDA, USGS, AeroGRID, IGN,

- YPG Boundary  
 US HWY 95  
 YPG Roads  
 North Impact Area  
 South Impact Area  
 Instrumentation/Observation Site  
 North Impact Staging Area  
 South Impact Staging Area  
 New South Impact Access Road  
 New South Impact Northeast Access Road (Unsurveyed)  
 East Arm North ROW  
 East Arm ROW road  
 East Arm South ROW  
 Truck Staging 1  
 Truck Staging 2  
 Truck Staging 3  
 Wash Crossing #1  
 Wash Crossing #2  
 Washout Future Repair  
 Widen Turn and Level  
 Widen and Trim Vegetation 300'  
 Township & Range  
 BLM  
 Private  
 State  
 State Wildlife Area  
 USFS  
 USFWS  
 Military



Sources: Esri, Airbus DS, USGS, NGA, NASA, CGIAR, N Robinson, NCEAS, NLS, OS, NIMA, Geodatastyrelsen, Rijkswaterstaat, GSA, Geoland, FEMA, Intermap and the GIS user community



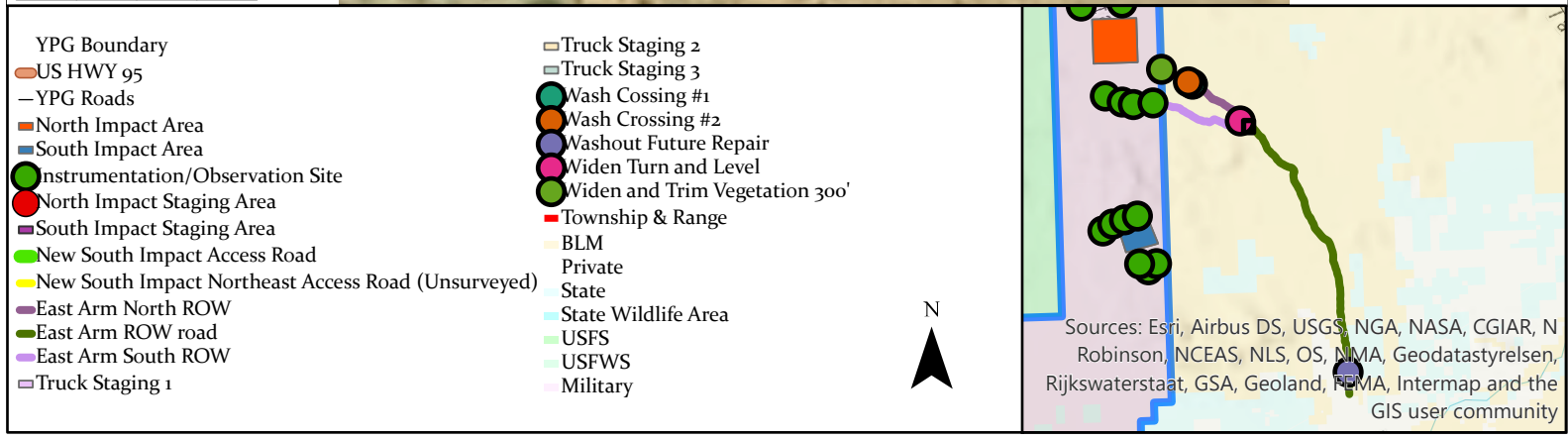
# Bureau of Land Management (BLM) Right-of-Way Road Truck Staging Areas



0 0.05 0.1 Miles

Source: Esri, Maxar, GeoEye, Earthstar Geographics, CNES/Airbus DS, USDA, USGS, AeroGRID, IGN,

Basemap: 2021  
Scale: 1:5,000  
Coordinate System:  
NAD 1983 UTM Zone 11N



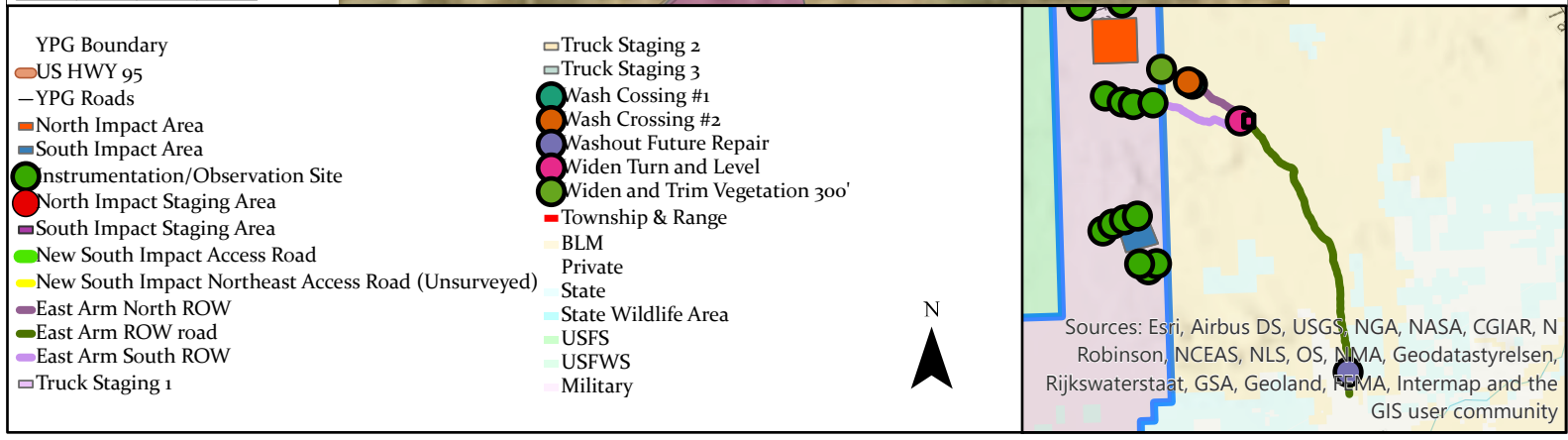


# Bureau of Land Management (BLM) Right-of-Way Road Truck Staging Areas



Source: Esri, Maxar, GeoEye, Earthstar Geographics, CNES/Airbus DS, USDA, USGS, AeroGRID, IGN, ...

Basemap: 2021  
Scale: 1:5,000  
Coordinate System:  
NAD 1983 UTM Zone 11N



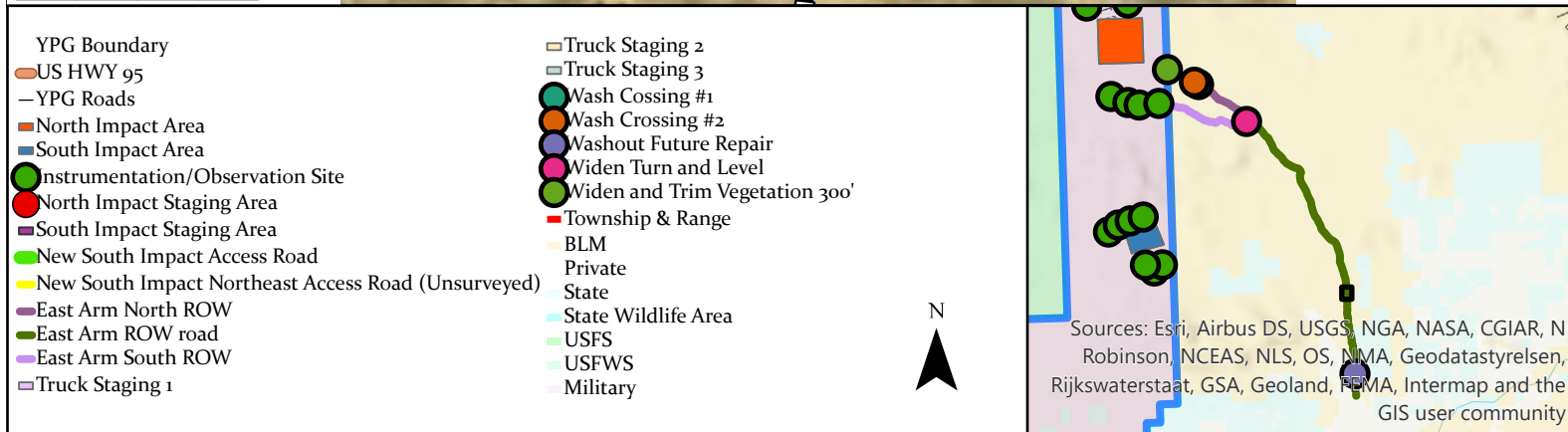


# Bureau of Land Management (BLM) Right-of-Way Road Truck Staging Areas



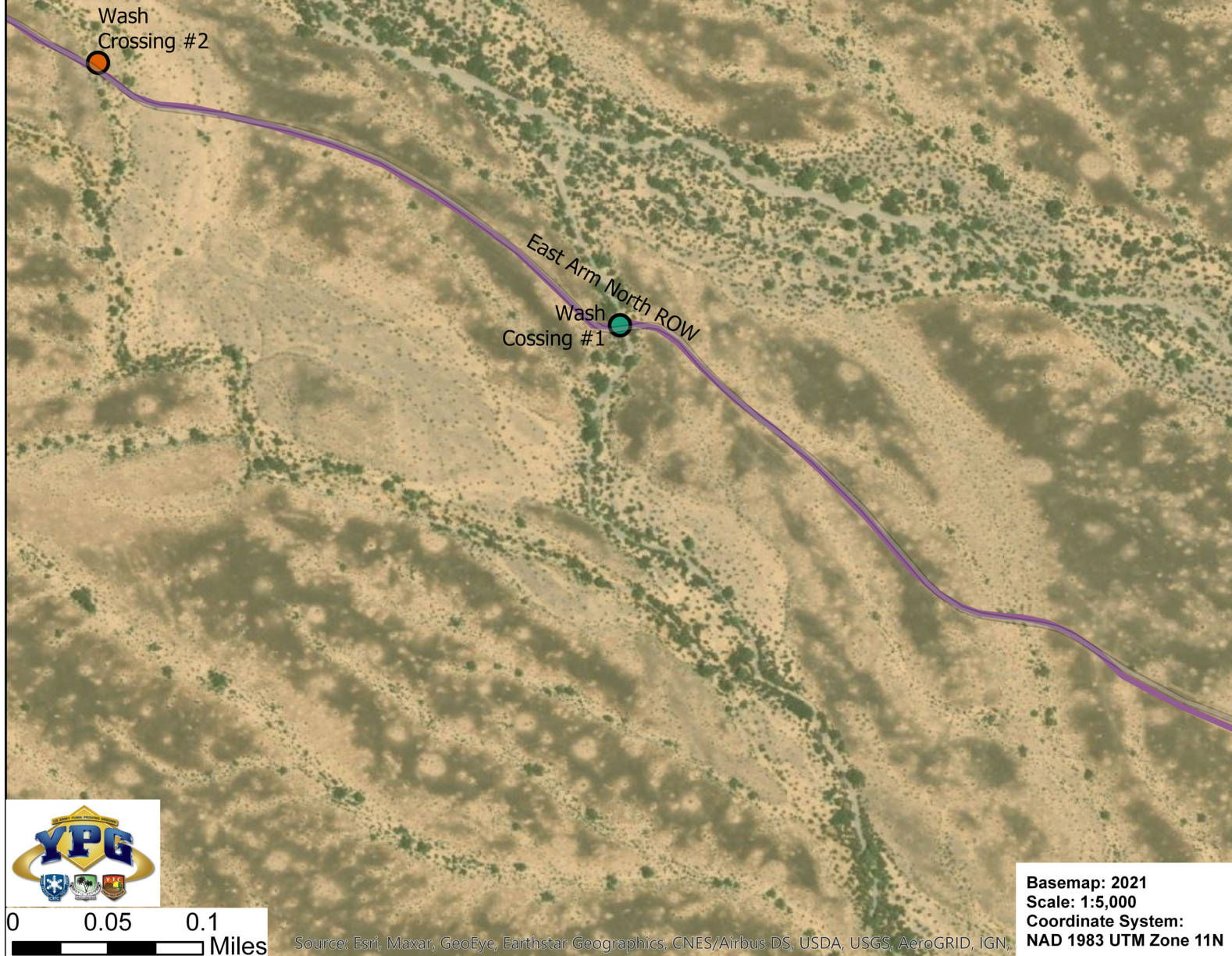
Source: Esri, Maxar, GeoEye, Earthstar Geographics, CNES/Airbus DS, USDA, USGS, AeroGRID, IGN,

Basemap: 2021  
Scale: 1:5,000  
Coordinate System:  
NAD 1983 UTM Zone 11N





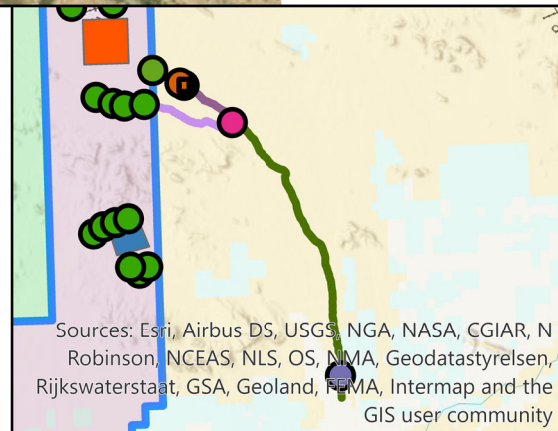
# Bureau of Land Management (BLM) Right-of-Way Road Repair Points



0 0.05 0.1 Miles

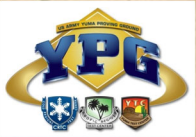
Source: Esri, Maxar, GeoEye, Earthstar Geographics, CNES/Airbus DS, USDA, USGS, AeroGRID, IGN,

- YPG Boundary
- US HWY 95
- YPG Roads
- North Impact Area
- South Impact Area
- Instrumentation/Observation Site
- North Impact Staging Area
- South Impact Staging Area
- New South Impact Access Road
- New South Impact Northeast Access Road (Unsurveyed)
- East Arm North ROW
- East Arm ROW road
- East Arm South ROW
- Truck Staging 1
- Truck Staging 2
- Truck Staging 3
- Wash Crossing #1
- Wash Crossing #2
- Washout Future Repair
- Widen Turn and Level
- Widen and Trim Vegetation 300'
- Township & Range
- BLM
- Private
- State
- State Wildlife Area
- USFS
- USFWS
- Military





# Bureau of Land Management (BLM) Right-of-Way Road Repair Points

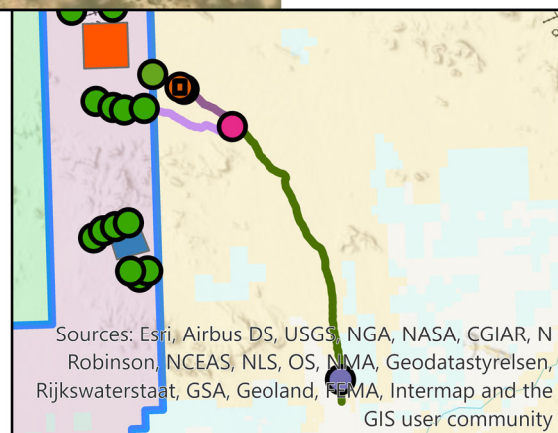


0 0.05 0.1 Miles

Source: Esri, Maxar, GeoEye, Earthstar Geographics, CNES/Airbus DS, USDA, USGS, AeroGRID, IGN,

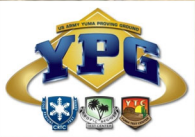
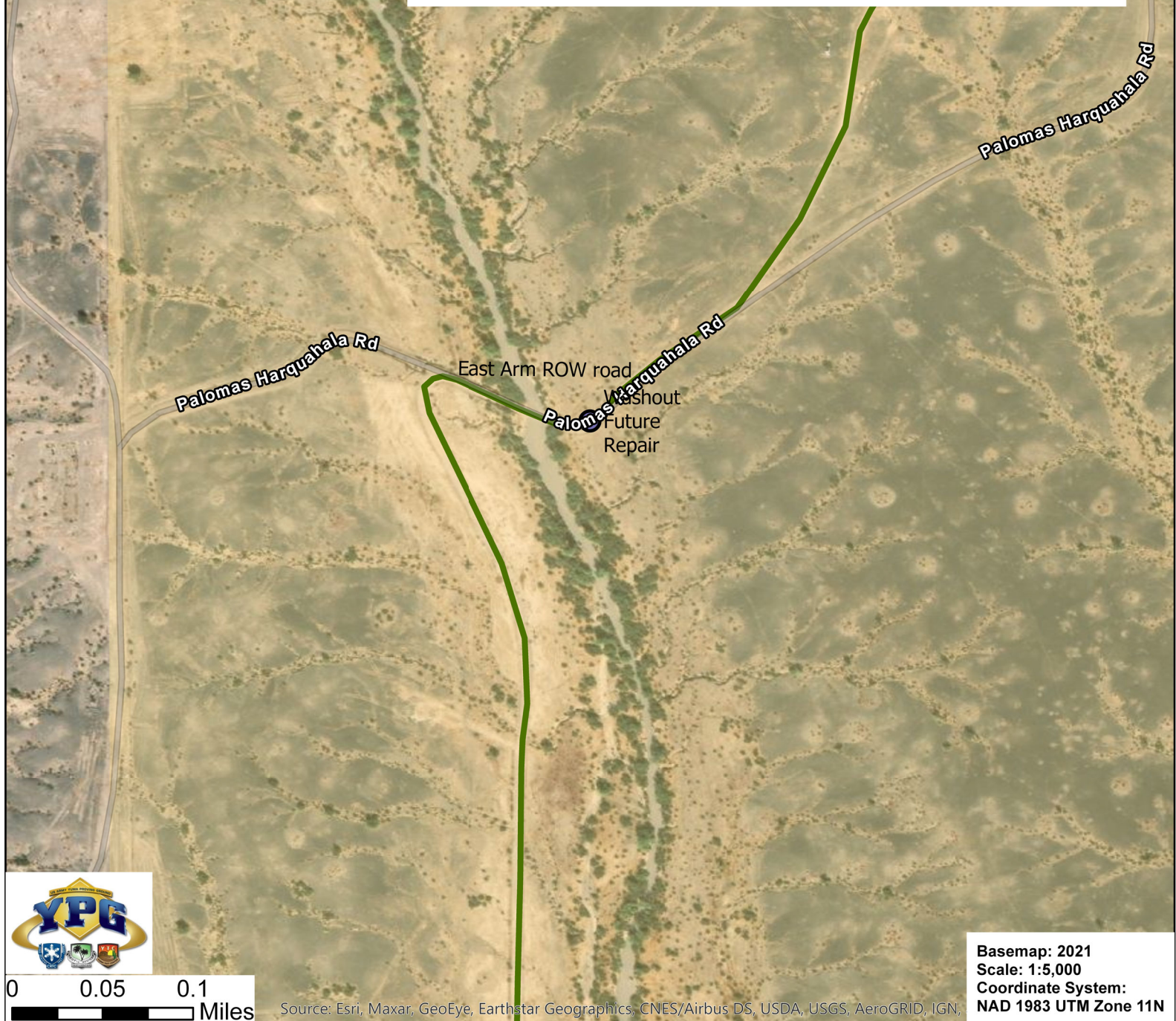
Basemap: 2021  
Scale: 1:5,000  
Coordinate System:  
NAD 1983 UTM Zone 11N

- YPG Boundary
- US HWY 95
- YPG Roads
- North Impact Area
- South Impact Area
- Instrumentation/Observation Site
- North Impact Staging Area
- South Impact Staging Area
- New South Impact Access Road
- New South Impact Northeast Access Road (Unsurveyed)
- East Arm North ROW
- East Arm ROW road
- East Arm South ROW
- Truck Staging 1
- Truck Staging 2
- Truck Staging 3
- Wash Crossing #1
- Wash Crossing #2
- Washout Future Repair
- Widen Turn and Level
- Widen and Trim Vegetation 300'
- Township & Range
- BLM
- Private
- State
- State Wildlife Area
- USFS
- USFWS
- Military

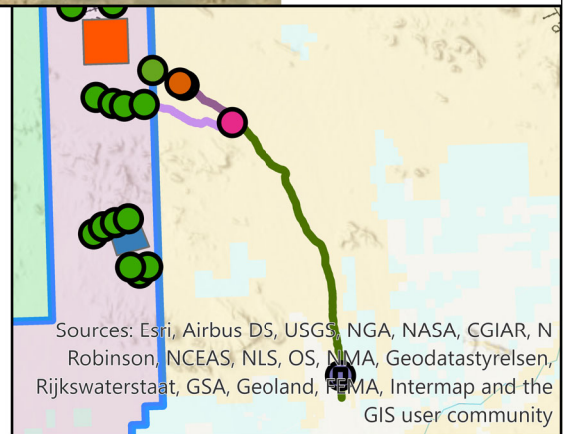




# Bureau of Land Management (BLM) Right-of-Way Road Repair Points

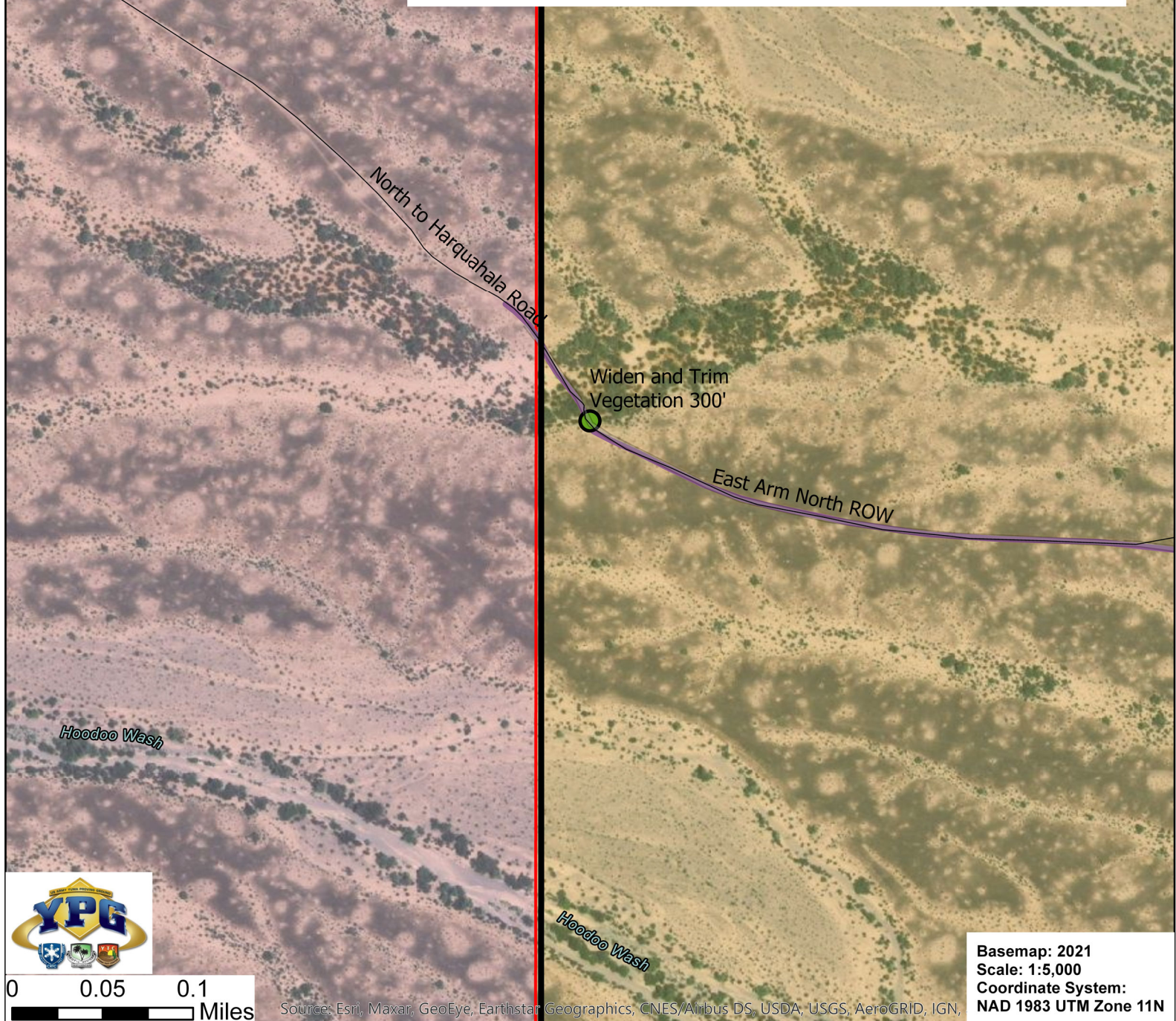


- YPG Boundary
- US HWY 95
- YPG Roads
- North Impact Area
- South Impact Area
- Instrumentation/Observation Site
- North Impact Staging Area
- South Impact Staging Area
- New South Impact Access Road
- New South Impact Northeast Access Road (Unsurveyed)
- East Arm North ROW
- East Arm ROW road
- East Arm South ROW
- Truck Staging 1
- Truck Staging 2
- Truck Staging 3
- Wash Crossing #1
- Wash Crossing #2
- Washout Future Repair
- Widen Turn and Level
- Widen and Trim Vegetation 300'
- Township & Range
- BLM
- Private
- State
- State Wildlife Area
- USFS
- USFWS
- Military

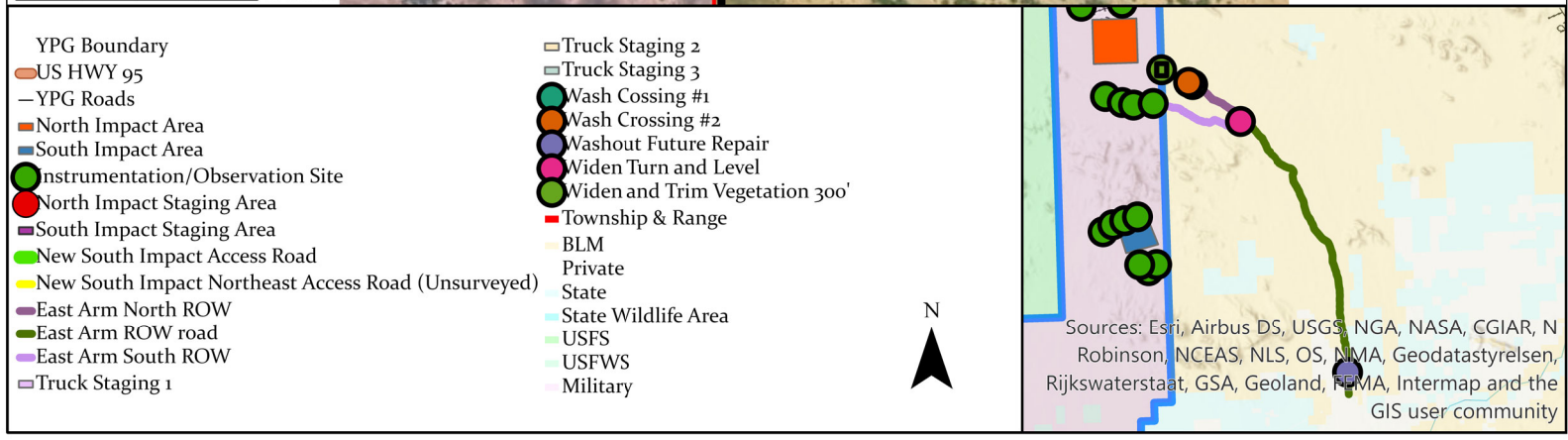




# Bureau of Land Management (BLM) Right-of-Way Road Repair Points

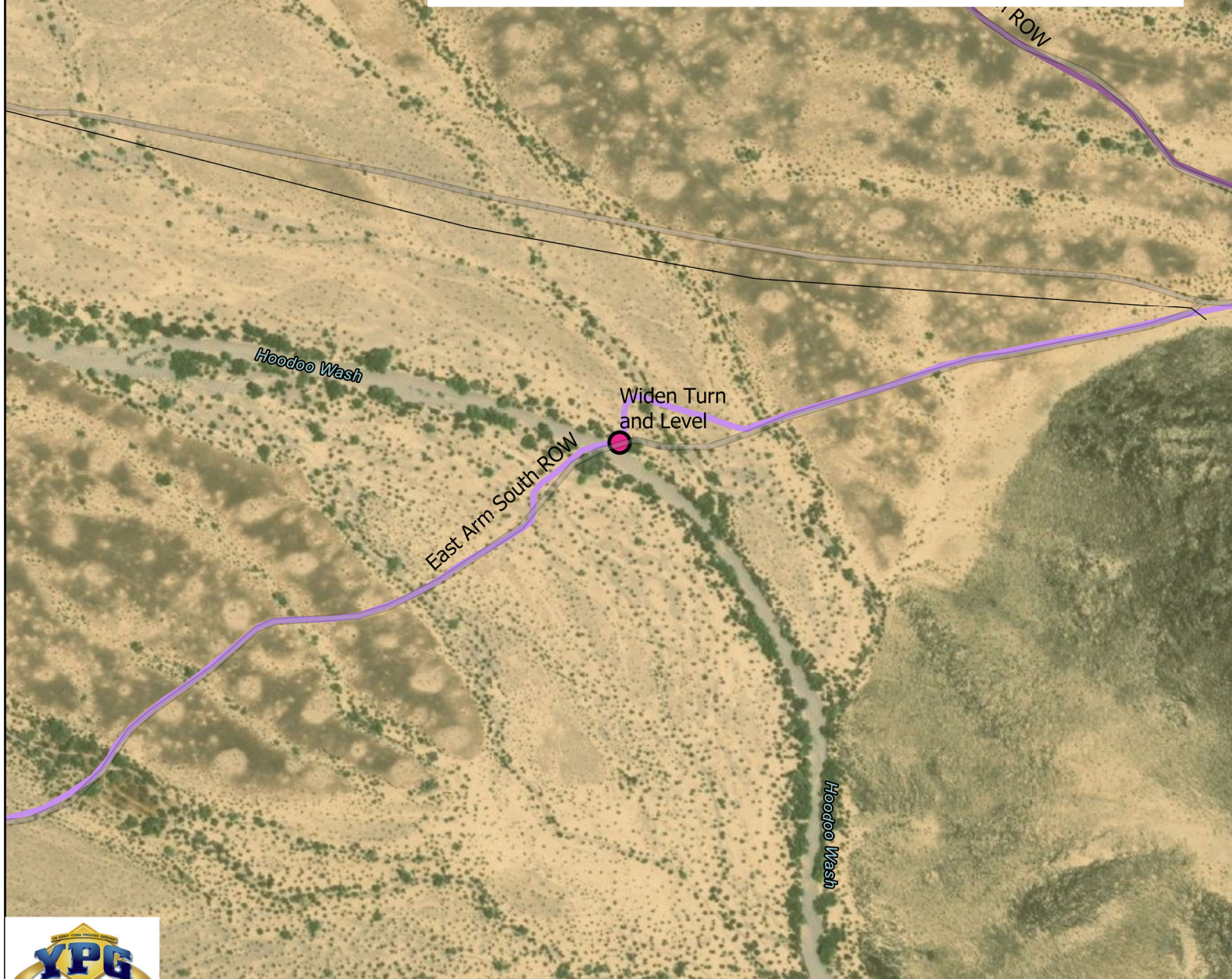


Basemap: 2021  
Scale: 1:5,000  
Coordinate System:  
NAD 1983 UTM Zone 11N





# Bureau of Land Management (BLM) Right-of-Way Road Repair Points



0 0.05 0.1  
Miles

Source: Esri, Maxar, GeoEye, Earthstar Geographics, CNES/Airbus DS, USDA, USGS, AeroGRID, IGN,

Basemap: 2021  
Scale: 1:5,000  
Coordinate System:  
NAD 1983 UTM Zone 11N

