

**PROGRAMMATIC AGREEMENT
AMONG
THE UNITED STATES ARMY GARRISON, YUMA PROVING GROUND,
THE ARIZONA STATE HISTORIC PRESERVATION OFFICER, AND
THE ADVISORY COUNCIL ON HISTORIC PRESERVATION
REGARDING THE
OPERATIONS, MAINTENANCE, AND DEVELOPMENT OF
YUMA PROVING GROUND, ARIZONA**

WHEREAS, the United States Army Garrison Yuma Proving Ground (USAG YPG) proposes to continue operations, maintenance, and development projects (undertakings) to ensure the mission of Yuma Proving Ground (YPG) as a test facility for weapons and munitions on approximately 837,916 acres of southwestern Arizona, north of Yuma; and

WHEREAS, YPG is a federally owned and operated facility, and YPG plans to carry out federally funded projects, thereby making the operations, maintenance, and development projects undertakings subject to review under Section 106 of the National Historic Preservation Act (NHPA), 16 United States Code (USC) § 470f, and its implementing regulations, 36 Code of Federal Regulations (CFR) Part 800; and

WHEREAS, the purpose of the undertakings is to enable USAG YPG to continue to provide adequate facilities for military testing and training activities and for ongoing contracting efforts capable of accommodating current and foreseeable technological advances; testing activities include military ground and aerial vehicle systems, weapons, ammunitions, sensors, and guidance systems; USAG YPG must provide realistic training for units, including, but not limited to, forward observer training, ground combat training, and operational training to provide real-world testing scenarios; and

WHEREAS, USAG YPG has determined the Area of Potential Effects (APE) to be all lands within the YPG boundary (Attachment A); and

WHEREAS, USAG YPG has determined that the development of a Programmatic Agreement (PA), in accordance with 36 CFR § 800.14(b)(1)(ii) and (iv), is warranted because specific details on some undertakings are unknown and the effects on historic properties cannot be fully determined prior to their approval, and for the routine nature of many actions that are part of the ongoing management and operation of YPG; and

WHEREAS, USAG YPG has determined that the undertakings may have adverse effects on historic properties, which are eligible for listing in the National Register of Historic Places (NRHP), and has consulted with the Arizona State Historic Preservation Officer (SHPO), pursuant to 36 CFR Part 800; and

WHEREAS, USAG YPG has consulted with the federally recognized Indian tribes (Tribes) of the Ak-Chin Indian Community, Chemehuevi Indian Tribe, Cocopah Indian Tribe, Colorado River Indian Tribes, Fort McDowell Yavapai Nation, Fort Mojave Indian Tribe, Gila River Indian Community, Hopi Tribe, Quechan Indian Tribe, Salt River Pima Maricopa Indian Community, San Carlos Apache Tribe, Tohono O'odham Nation, Yavapai-Apache Nation, and Yavapai-Prescott Indian Tribe, who attach traditional, religious, and/or cultural significance to YPG lands or cultural resources therein that may be affected by the undertakings, and has invited them to sign this PA as concurring parties; and

WHEREAS, USAG YPG invited the Bureau of Land Management (BLM), Yuma Field Office, and Western Area Power Administration to participate in the development of this PA and they agreed to sign as concurring parties; and

WHEREAS, USAG YPG invited the U.S. Fish and Wildlife Service (USFWS), Arizona Historical Society, Rio Colorado Division, Yuma, and the City of Yuma, a certified local government, to participate in the development of this PA and each has declined to sign as concurring parties; and

WHEREAS, USAG YPG has provided the public an opportunity to comment by placing the following notices of this PA: in the *Yuma Sun* newspaper on January 23, 2013, August 23, 2013, and March 23, 2014; posted a draft PA on the USAG YPG public internet site January 31 through March 12, 2013, September 4 through October 7, 2013, and March 25 through May 12, 2014; at the Yuma County Library Main and Foothills branches February 7 through March 6, 2013, September 4 through October 7, 2013, and March 25 through May 12, 2014; and at the YPG Library September 4 through October 7, 2013, and March 25 through May 12, 2014; and no responses were received; and

WHEREAS, in accordance with 36 CFR § 800.6(a)(1), USAG YPG has notified the Advisory Council on Historic Preservation (ACHP) of its adverse effect determination, providing the required documentation, and the ACHP has chosen to participate in accordance with 36 CFR § 800.6(a)(1)(iii); and

WHEREAS, USAG YPG has previously conducted cultural resources inventories of 174,098 acres of YPG from 1981 to 2013 (Attachment A) and has identified 848 historic properties as individually eligible for the NRHP, all of which are archaeological sites (Attachment B), and SHPO reaffirmed their concurrence with these findings in correspondence dated May 10, 2013; and

WHEREAS, of these 848 sites, 659 are also contributing resources located within 13 NRHP-eligible archaeological districts; and

WHEREAS, to date, there are no evaluated buildings or structures at YPG that qualify as historic properties except those covered by the *Program Comment for Capehart and Wherry Era Army Family Housing and Associated Structures and Landscape Features (1949–1962)*, *Program Comment for World War II and Cold War Era (1939-1974) Ammunition Storage Facilities*, *Program Comment for Cold War Era Unaccompanied Personnel Housing (1946-1947)*, and undertakings at properties for which effects have been taken into account through those program comments and the *Program Comment for DoD Rehabilitation Treatment Measures*, which are not part of this PA; and

WHEREAS, inholdings, rights of way, and structures not belonging to or under the jurisdiction of USAG YPG are exempt from this PA; and

WHEREAS, properties of traditional religious and cultural significance to Tribes have been identified but are unevaluated for eligibility to the NRHP; however, USAG YPG recognizes that properties of traditional religious and cultural significance have importance to Tribes; and

WHEREAS, USAG YPG shall treat buildings, structures, sites, objects, and districts that are 45 years of age or older that have not yet been evaluated for NRHP eligibility as eligible for listing in the NRHP; and

WHEREAS, USAG YPG has developed a *Geomorphic-Based Archaeological Sensitivity Model for U.S. Army Yuma Proving Ground, Arizona* (2011 sensitivity model) to help predict areas of likely archaeological sensitivity at YPG and provided this model to Tribes and SHPO for review and comment, and it will be implemented taking into account comments received by the SHPO in 2013; and

WHEREAS, USAG YPG has not conducted, and does not plan to conduct, cultural resources inventories in dedicated impact areas, high hazard impact areas, open burn/open detonation areas, chemical test areas, newly identified unexploded ordnance sites, historical contamination areas, and environmental compliance and restoration sites (Attachments C and D) due to human life and safety issues; and

WHEREAS, USAG YPG, SHPO, and the ACHP agree that upon execution of this PA, the *Memorandum of Agreement Between the Department of the Army, the Advisory Council on Historic Preservation, and the Arizona State Historic Preservation Officer Regarding Realignment of Activities to Yuma Proving Ground, Arizona*, executed on 19 August 1992 (1992 Memorandum of Agreement [MOA]), will become null and void and will be replaced with the process outlined in this PA; and

WHEREAS, the Historic Preservation Plan referenced in the 1992 MOA has become the Integrated Cultural Resources Management Plan (ICRMP); and

WHEREAS, undertakings addressed through the 2011 *Programmatic Agreement Among Federal Highway Administration, United States Bureau of Land Management, United States Bureau of Reclamation, U.S. Army Yuma Proving Ground, Arizona Department of Transportation, Arizona State Land Department, Arizona State Museum, Yavapai-Prescott Indian Tribe, Cocopah Tribe, Hopi Tribe, Colorado River Indian Tribe, Ft. Yuma-Quechan Tribe, Ft. Mojave Indian Tribe, U.S. Army Corps of Engineers, and Arizona State Historic Preservation Office Regarding the Historic Properties Along United States Route 95 Between Avenue 9E and Aberdeen Road, Yuma County, Arizona*, the 2013 *Programmatic Agreement Among U.S. Department of Energy-Western Area Power Administration, the Advisory Council on Historic Preservation, Arizona State Historic Preservation Officer, Arizona State Lands Department, Bureau of Indian Affairs, Bureau of Land Management, Bureau of Reclamation, National Park Service, United States Forest Service, Yuma Proving Ground, Ak-Chin Indian Community, Colorado River Indian Tribes, Fort Mojave Indian Tribes, Fort Yuma-Quechan Tribe, Gila River Indian Community, Hualapai Tribe, Navajo Nation, Salt River Pima-Maricopa Indian Community, and Tohono O'odham Nation Regarding Maintenance and Minor Construction Activities at Existing Western Transmission Lines, Facilities and Properties in Arizona*, and the 2013 *Memorandum of Agreement Between Department of the Interior, Bureau of Land Management, Arizona; Department of the Interior, Bureau of Reclamation, Lower Colorado Region; U.S. Army Garrison, Yuma Proving Ground; Arizona State Land Department; Arizona Public Service Company and the Arizona State Historic Preservation Office Regarding the Hassayampa to North Gila 500kV-2 Transmission Line*, will be carried out in accordance with the terms of such documents and are not subject to the terms of this PA; and

WHEREAS, provisions in the 2005 (modified in 2011) *USAG YPG/Cocopah Tribe Cooperative Agreement: Services Between the U.S. Army Yuma Proving Ground and the Cocopah Indian Tribe Cocopah Museum, Somerton, Arizona* and the 2010 (extended in 2014) *Memorandum of Understanding between the Yavapai-Prescott Indian Tribe and U.S. Army Garrison Yuma Proving Ground* are not affected by this PA; and

Background

- A map entitled “Area of Potential Effects & Previous Surveys” showing the APE for this PA and the areas that have been previously surveyed for cultural resources within that APE is included as Attachment A.
- A list of identified historic properties on YPG is included as Attachment B.
- A map entitled “Impact Areas, Other Contaminated Areas, & Previously Disturbed Areas” showing all dedicated impact areas (including high hazard impact areas), open burn/open detonation areas, chemical test areas, newly identified unexploded ordnance sites, environmental compliance and restoration sites, historical contamination areas, and previously disturbed areas at YPG is included as Attachment C.

- A map entitled “Impact Areas, Other Contaminated Areas, & Previously Disturbed Areas Overlain with Areas Previously Surveyed for Cultural Resources at YPG” showing the previously surveyed areas overlain on the map of impact areas, other contaminated areas, and previously disturbed areas is included as Attachment D.
- A list of pertinent definitions and all acronyms used in this PA is included as Attachment E.
- Standard Operating Procedure #5 of the USAG YPG ICRMP for “Inadvertent Discovery of Archaeological Deposits” is included as Attachment F.
- A map entitled “Lands No Longer Requiring Cultural Resources Survey” showing those areas of YPG that USAG YPG will no longer survey for the identification of historic properties through consultation with the SHPO and Tribes is included as Attachment G. This map will be developed after the execution of this PA in accordance with Stipulation III.
- A list of those undertakings that USAG YPG, the SHPO, and the ACHP agree would have no adverse effects to historic properties, and which the SHPO and the ACHP agree no longer need to be reviewed by their offices, is included as Attachment H.
- All days referred to in this PA are calendar days, unless otherwise noted.

Now, therefore, the USAG YPG, the SHPO, and the ACHP agree that this PA shall be implemented in accordance with the following stipulations in order to take into account the effects of undertakings on historic properties.

Stipulations

USAG YPG shall ensure that the following measures are carried out:

I. Roles and Responsibilities of Consulting Parties

A. U.S. Army Garrison Yuma Proving Ground

1. The USAG YPG Garrison Manager is responsible for all decisions regarding the applicability of this PA to undertakings within the APE pursuant to Army Regulation 200-1: *Environmental Protection and Enhancement*.
2. The USAG YPG Garrison Manager shall designate a Cultural Resources Manager (CRM) at USAG YPG with the authority to implement this PA and conduct the stipulated coordination and consultation with other signatories, concurring parties, tribes, other concerned agencies, organizations, and persons. The implementation of this agreement shall be primarily executed on a day-to-day basis by the CRM acting for the Garrison Manager, responsible for ensuring that the stipulations herein are met.
3. The CRM shall meet or USAG YPG shall employ, maintain a contract with, or obtain through other means professional expertise that meets the qualification standards outlined in the Secretary of the Interior’s Historic Preservation Professional Qualification Standards [as amended and annotated] for archeology, history, architecture, historic architecture, or architectural history, as appropriate for the undertaking.

4. The CRM shall ensure that efforts to identify, evaluate, and treat historic properties under the stipulations of this PA meet the Secretary of the Interior's Standards and Guidelines for the Treatment of Historic Properties.
5. USAG YPG shall consult with BLM or the USFWS on joint eligibility determinations for any cultural resources that extend onto BLM or USFWS lands and will provide the SHPO with documentation of the consultation regarding the determinations of eligibility and seek a consensus of eligibility for these cultural resources.
6. USAG YPG shall notify the public and other identified consulting parties in coordination with the National Environmental Policy Act to meet Section 106 public consultation requirements.
7. USAG YPG shall consult with the SHPO, in accordance with Stipulation III, to define areas requiring no further cultural resources survey efforts based on previous surveys and disturbances.

B. The Arizona State Historic Preservation Officer

1. The SHPO may raise objections according to Stipulation IX, may amend this agreement according to Stipulation X, or may terminate this agreement according to Stipulation XI.
2. The SHPO shall respond within the timeframes of this agreement after notifications are received.

C. The Advisory Council on Historic Preservation

1. The ACHP may raise objections and/or resolve objections according to Stipulation IX, may amend this agreement according to Stipulation X, or may terminate this agreement according to Stipulation XI.
2. The ACHP shall not participate in identifications, evaluations, or reviews described under stipulations II, III, and IV unless requested in writing from either USAG YPG, the SHPO, or Tribes.

D. Concurring Parties

1. Concurring parties may raise objections according to Stipulation IX.

II. Section 106 Project Review Process

A. Determine the Undertaking

1. The CRM shall determine if the proposed project is an undertaking as defined in 36 CFR § 800.16(y).
 - a) If the CRM determines the proposed project is not an undertaking, as defined in 36 CFR § 800.16(i), the CRM shall document this determination for inclusion in the Annual Report, and USAG YPG has no further obligations under this stipulation.

- b) If the CRM determines that the proposed project is listed as an exempted undertaking, as identified in Attachment H, the CRM shall document this determination for inclusion in the Annual Report, and USAG YPG has no further obligations under this stipulation.
 - c) If the CRM determines the proposed project is an undertaking not listed in Attachment H, the CRM shall continue the Section 106 Project Review Process.
2. The CRM will ensure that all Digging Permits and Records of Environmental Consideration contain text derived from Standard Operating Procedure (SOP) #5, "Inadvertent Discovery of Archaeological Deposits," as found in Attachment F.

B. Define the Area of Potential Effects and Identify Historic Properties

- 1. The CRM shall determine and document the project APE for each specific undertaking, appropriate to the scope and scale of the undertaking, and considering direct, indirect, and cumulative effects.
- 2. The CRM shall determine if cultural resource surveys are required for the project APE using the following parameters:
 - a) If the project APE is limited to within a dedicated impact area, high hazard impact area, open burn/open detonation area, chemical test area, newly identified unexploded ordnance site, environmental compliance and restoration site, or unsafe historical contamination area (Attachments C and D), no additional cultural resource survey is required and the CRM shall continue to Stipulation II(C) in the Section 106 Project Review Process.
 - (1) For undertakings with project APEs in non-ordnance contaminated areas, in ordnance contaminated historic World War II training areas, or in other ordnance contaminated areas (as shown on Attachments C and D), some contaminated areas may be off limits to ground-disturbing activities, including archaeological surveys, and may not be surveyed at all, at the sole discretion of the CRM. Undertakings in contaminated areas where the CRM determines that they do not pose an imminent threat shall be subject to survey.
 - (2) Undertakings with project APEs proposed within dedicated impact areas (as shown on Attachments C and D) that require changes in land use designation for project development could be subject to survey at the discretion of the CRM.
 - b) If the project APE is limited to within an area delineated in Attachment G, upon acceptance, no additional cultural resource survey is required, and the CRM shall continue to Stipulation II(C) in the Section 106 Project Review Process.

- c) If the project APE is in an area not delineated in Attachments C, D, or G, the CRM shall determine the level of cultural resource survey necessary, depending on the size and location of the project APE based on the 2011 sensitivity model, as YPG lands are categorized as having low, moderate, or high potential to possess archaeological sites (summary provided in the Fiscal Year 2012-2016 ICRMP; the full study for the sensitivity model is available upon request from the CRM), and the survey percentage based on previous consultation with the SHPO in the development of this PA.
 - (1) Undertakings in areas of low sensitivity for archaeological sites will be surveyed at less than 100 percent regardless of size of the project APE.
 - (2) For undertakings with a project APE of 200 acres or less, that are not in low sensitivity areas or not in exempt areas as defined in Attachments C, D, or G, the CRM shall prepare and implement a survey approach using standard procedures based on appropriate SHPO guidance for identification efforts.
 - (3) For undertakings with a project APE larger than 200 acres, that are not in low sensitivity areas or not in exempt areas as defined in Attachments C, D, or G, the CRM shall prepare the survey approach using the standard procedures based on appropriate SHPO guidance for identification efforts, and finalize the project APE and survey approach in consultation with the SHPO and Tribes.
 - (a) The CRM shall provide the SHPO and Tribes the survey approach and project APE 30 days in advance of the proposed inventory and request comments.
 - (b) The SHPO has 20 days upon receipt of all pertinent documentation to provide comments on the survey approach and project APE. If no comments are received within that time, the CRM shall make a second attempt to contact the SHPO for comments before assuming concurrence with the USAG YPG survey approach and project APE.
 - (c) The Tribes are under no obligation to provide comments on the proposed survey approach or project APE; however, if they wish USAG YPG to consider their comments regarding the proposed survey approach or project APE, Tribes should submit comments in writing within 20 days of receipt of all pertinent documentation.
 - (d) If there are comments, the CRM will consult to address comments and refine inventory planning efforts, as needed, prior to implementing the proposed inventory and survey.
- d) If the project APE is in an area not delineated in Attachments C, D, or G and there is a previous cultural resource survey completed but has not been reviewed or concurred on by the SHPO, USAG YPG shall proceed in accordance with Stipulation II(B)(3) for the review of that survey.

3. Evaluation of Surveyed Cultural Resources

- a) Surveys that identify inventoried areas with no archaeological sites, isolated features or artifacts, or other cultural resources will be defined as negative surveys.
 - (1) The CRM shall provide reports of negative surveys to Tribes before finalizing the report. The Tribes are under no obligation to provide comments on the negative surveys; however, if they wish USAG YPG to consider their comments regarding the negative surveys, Tribes should submit comments in writing within 45 days of receipt of all pertinent documentation. If Tribes identify properties of traditional religious and cultural significance and/or Traditional Cultural Properties, the CRM shall proceed to Stipulation II(B)(3)(b) in the Section 106 Project Review Process.
 - (2) A list of finalized negative survey reports will be part of the Annual Report, and the CRM shall proceed to Stipulation II(B)(4) in the Section 106 Project Review Process.
- b) All newly identified cultural resources, and any previously identified but unevaluated cultural resources that could be affected by an undertaking, shall be evaluated by USAG YPG in accordance with 36 CFR Part 63 and bulletins, guidance, and documents produced by the National Park Service (NPS) to determine if they are historic properties and shall be assessed for effect by the proposed undertaking in accordance with Stipulation II(C)(1). All pertinent reports and determinations will be provided to the SHPO and Tribes for review and comment.
 - (1) The SHPO shall provide a response to USAG YPG eligibility determinations and effect findings within 30 days of receipt of all pertinent documentation in accordance with Stipulation II(C)(2)(c) or Stipulation II(C)(3)(c). If no comments are received within that time, the CRM shall make a second attempt to contact the SHPO for comments before assuming concurrence with USAG YPG determinations. If USAG YPG and the SHPO cannot resolve the issue within 30 days, then USAG YPG shall forward the dispute to the Keeper of the NRHP for resolution at the conclusion of the 30 day period.
 - (2) The Tribes are under no obligation to provide comments on the eligibility determinations; however, if they wish USAG YPG to consider their comments regarding the eligibility determinations, Tribes should submit comments in writing within 30 days of receipt of all pertinent documentation.
- c) USAG YPG shall consult with Tribes to identify properties of traditional religious and cultural significance (16 U.S.C. 470 Section 101[d][6][A]), and also potential Traditional Cultural Properties, in accordance with NPS Bulletin 38. Due to their unique nature, properties of traditional religious and cultural significance and Traditional Cultural Property determinations will be handled on a case-by-case basis, respecting the desires of the Tribes affected while expediting the mission of USAG YPG.

4. If the CRM does not identify any historic properties within the project APE, the CRM shall document this determination of “No Historic Properties Affected” for those undertakings for inclusion in the Annual Report, and USAG YPG has no further obligations under this stipulation.
5. If the CRM identifies a historic property that may be directly, indirectly, or cumulatively affected within the project APE, the CRM shall continue the Section 106 Project Review Process.

C. Evaluate Effects of the Undertaking

1. The CRM shall assess the effects of the proposed undertaking on historic properties, including direct, indirect, and cumulative effects, using the criteria of adverse effects (36 CFR § 800.5(a)(1)) and shall make one of the following determinations:
 - a) “No Historic Properties Affected”: if the CRM determines that historic properties present in the project APE will not be affected by the undertaking, the CRM shall document this determination for those undertakings for inclusion in the Annual Report, and USAG YPG has no further obligations under this stipulation.
 - b) “No Adverse Effect to Historic Properties”: if the CRM determines that historic properties present in the project APE will not be adversely affected by the undertaking, and the undertaking is not included in Attachment H, the CRM shall proceed to Stipulation II(C)(2).
 - c) “Adverse Effect to Historic Properties”: if the CRM determines that historic properties present in the project APE will be adversely affected by the undertaking, the CRM shall proceed to Stipulation II(C)(3).
2. No Adverse Effect to Historic Properties
 - a) For those undertakings with a finding of “No Adverse Effect to Historic Properties” the CRM shall provide the SHPO and Tribes with appropriate reports and/or documentation including, but not limited to, the following:
 - (1) project description, to include depth and amount of ground disturbance anticipated;
 - (2) APE map showing the location of the project and summary of survey efforts to identify historic properties;
 - (3) description of the historic properties affected;
 - (4) any photos, as necessary; and
 - (5) finding of effect and request for concurrence on “No Adverse Effect to Historic Properties” finding from the SHPO.

- b) The Tribes are under no obligation to provide comments on the effect determination; however, if they wish USAG YPG to consider their comments regarding the effect determination, Tribes should submit comments in writing within 30 days of receipt. If no comments are received within that time, the CRM shall make a second attempt to contact the Tribes for comments. USAG YPG shall take any tribal comments received into consideration before concluding the consultation and will notify the SHPO of any tribal concerns and the USAG YPG response to those concerns.
- c) The SHPO shall provide a response to USAG YPG effect determination within 30 days of receipt of all pertinent documentation. If no comments are received within that time, the CRM shall make a second attempt to contact the SHPO for comments before assuming concurrence with the USAG YPG effect determination.
 - (1) If the SHPO concurs with the “No Adverse Effect to Historic Properties” finding, the CRM shall document this concurrence for inclusion in the Annual Report, and USAG YPG has no further obligations under this stipulation.
 - (2) If the SHPO does not concur with the finding of “No Adverse Effect to Historic Properties,” the CRM shall consult with the SHPO for no more than a total of 30 days, or other time period as agreed to between SHPO and the CRM, upon receipt of SHPO notification of non-concurrence to attempt to resolve the concerns identified by the SHPO.
 - (a) If at the end of the 30 days, or agreed to specified time, the SHPO concurs with the finding of “No Adverse Effect to Historic Properties,” the CRM shall document this concurrence for inclusion in the Annual Report, and USAG YPG has no further obligations under this stipulation.
 - (b) If at the end of the 30 days, or agreed to specified time, the SHPO does not concur with the finding of “No Adverse Effect to Historic Properties,” the CRM shall notify the ACHP in accordance with Stipulation IX.

3. Adverse Effect to Historic Properties

- a) For those undertakings with a finding of “Adverse Effect to Historic Properties” the CRM shall provide the SHPO and Tribes with a packet of information including, but not limited to, the following:
 - (1) project description, to include depth and amount of ground disturbance anticipated;
 - (2) APE map showing the location of the project and summary of survey efforts to identify historic properties;
 - (3) description of the historic properties affected;
 - (4) documentation of alternatives considered to avoid or minimize the adverse effect and why they could not be accomplished; and
 - (5) any photos, as necessary.

- b) The Tribes are under no obligation to provide comments on the effect determination; however, if they wish USAG YPG to consider their comments regarding the effect determination, Tribes should submit comments in writing within 30 days of receipt. If no comments are received within that time, the CRM shall make a second attempt to contact the Tribes for comments. USAG YPG shall take any tribal comments received into consideration before concluding the consultation and will notify the SHPO of any tribal concerns and USAG YPG response to those concerns.
- c) The SHPO shall provide any comments to the USAG YPG effect determination within 30 days of receipt of all pertinent documentation.

D. Resolution of Adverse Effects

1. The CRM shall notify Consulting Parties and the public within 10 days of notifying the SHPO and Tribes of an adverse effect finding for an undertaking using the following process:
 - a) The CRM shall prepare and send a notification package for the Consulting Parties, including a description of the undertaking, an illustration of the project APE, a list of identified historic properties within the project APE, the explanation for the finding of adverse effects, steps taken or considered by USAG YPG to avoid or minimize the adverse effects, any SHPO comments received by USAG YPG regarding the undertaking, an invitation to participate in a consultation to resolve adverse effects, and proposed dates for a Consulting Parties meeting.
 - b) The CRM shall post a notice of the adverse effects finding on the official USAG YPG website to include a description of the undertaking, a list of identified historic properties, the explanation for the finding of adverse effects, steps taken or considered by USAG YPG to avoid or minimize the adverse effects, any SHPO comments received by USAG YPG regarding the undertaking, and an invitation to provide written comment within 30 days of posting to the CRM.
 - c) Consulting Parties are under no obligation to provide comments on the effect finding; however, if they wish USAG YPG to consider their comments regarding the effect finding, Consulting Parties should submit comments in writing within 30 days of receipt. If no comments are received within that time, the CRM shall make a second attempt to contact the Consulting Parties for comments and if they wish to participate in the resolution of adverse effects. USAG YPG shall take any comments received into consideration before concluding the consultation and will notify the SHPO of any concerns and USAG YPG response to those concerns.
2. The CRM shall organize a consultation meeting, to include the SHPO, approximately 45 days after notifying Consulting Parties to discuss alternatives to avoid, minimize, or mitigate the adverse effects. Additional meetings shall be scheduled as needed.
3. If through consultation with the SHPO and Consulting Parties the undertaking avoids adverse effects, the CRM will document the alternatives utilized in an attempt to reduce the effects of the undertaking to a no adverse effects finding in consultation and in concurrence with all participating Consulting Parties and include them in the Annual Report, and USAG YPG has no further obligations under this stipulation.

4. If through consultation with the SHPO and Consulting Parties the adverse effects are minimized or mitigated, then the measures agreed to by USAG YPG, the SHPO, and Consulting Parties can be specified in a MOA in accordance with 36 CFR § 800.6(c) and filed with the ACHP upon execution.
5. The ACHP will only participate in the resolution of adverse effects for individual undertakings if a written request is received from USAG YPG, the SHPO, or a Tribe.

III. Establishing Areas for No Additional Cultural Resources Surveys

- A. In consultation with the SHPO and Tribes, the CRM shall develop a map, titled “Lands No Longer Requiring Cultural Resources Survey,” to define those YPG lands that require no additional cultural resources surveys, and shall update USAG YPG’s Geographic Information System (GIS) database to reflect these areas within one year of execution of this PA.
- B. USAG YPG shall use the following parameters to help define those areas:
 1. Lands that have been surveyed by previous investigations meeting current SHPO and Arizona State Museum Standards and which have been subject to Section 106 consultation to identify historic properties, or the lack thereof, with the SHPO and Tribes for previous undertakings;
 2. Lands that have been extensively disturbed by past human activities; in general, these include developed areas such as cantonment areas, drop zones, and similar areas with little to no probability of subsurface deposits that have been previously bladed or similarly disturbed.
- C. The CRM shall prepare a draft map that illustrates these areas within 90 days of execution of this PA and provide it to SHPO and the Tribes for their review and comment.
 1. The SHPO shall provide a response to USAG YPG regarding the draft map within 30 days of receipt of all pertinent documentation (to include accompanying descriptive materials). If no comments are received within that time, the CRM shall make a second attempt to contact the SHPO for comments.
 2. The Tribes are under no obligation to provide comments on the draft map; however, if they wish USAG YPG to consider their comments regarding the areas that will not require additional cultural resources review, Tribes should submit comments in writing within 30 days of receipt. If no comments are received within that time, the CRM shall make a second attempt to contact the Tribes for comments. USAG YPG shall take any tribal comments received into consideration and will notify the SHPO of any tribal concerns and USAG YPG response to those concerns.
- D. The CRM shall prepare a draft final map within 60 days of receiving comments from the SHPO and Tribes and provide it to SHPO and the Tribes for their final review and concurrence.
 1. The SHPO shall provide a response to USAG YPG regarding the draft final map within 30 days of receipt of all pertinent documentation (to include accompanying descriptive materials). If no comments are received within that time, the CRM shall make a second attempt to contact the SHPO for comments before assuming concurrence with USAG YPG draft final map.

2. The Tribes are under no obligation to provide comments on the draft final map; however, if they wish USAG YPG to consider their comments regarding the areas that will not require additional cultural resources review, Tribes should submit comments in writing within 30 days of receipt. If no comments are received within that time, the CRM shall make a second attempt to contact the Tribes for comments. USAG YPG shall take any tribal comments received into consideration before concluding the consultation and will notify the SHPO of any tribal concerns and the USAG YPG response to those concerns.
- E. If the SHPO fails to concur on the map and USAG YPG and SHPO cannot reach a resolution on the map within 30 days of SHPO's response, the matter shall be referred to the ACHP in accordance with Stipulation IX.
- F. USAG YPG shall include the "Lands No Longer Requiring Cultural Resources Survey" map in its GIS database, delineate on installation maps, and include it in this PA as Attachment G within 120 days of its finalization.
- G. USAG YPG shall distribute to all Consulting Parties, in the format of their choice, the final "Lands No Longer Requiring Cultural Resources Survey" map within 120 days of its finalization.
- H. USAG YPG shall review the "Lands No Longer Requiring Cultural Resources Survey" map, in consultation with the SHPO and the tribes every two years, or more frequently as appropriate, following its finalization to determine if additional areas are to be included.

IV. Sensitivity Model Update

- A. USAG YPG shall update the 2011 sensitivity model within two years after execution of this PA, and every five years thereafter in conjunction with major ICRMP updates, with new archaeological and ethnographic data, as long as this PA is in effect.
- B. Update intervals will be based on number of sites identified, areas surveyed, or number of locations refined.
- C. The SHPO and Tribes have reviewed the categorization of these areas as part of their concurrence with this PA.

V. Post Review Discoveries

This stipulation applies to any and all instances of post review discoveries, including: post review discovery of a cultural resource not previously identified in project review and after project approval and initiation; post review discovery of an effect not previously identified in project review and after project approval and initiation; or post review discovery of an effect willfully inflicted on identified historic property after project approval and initiation. In the event of a post review discovery, the CRM, under the authority of the Garrison Manager, can halt an undertaking until consultation under this PA has concluded. If the discovery is made as part of an ongoing contracting effort at YPG, the discovery must be reported immediately to the Contracting Officer, who has the authority to halt an undertaking. The Contracting Officer must notify the CRM within 24 hours.

- A. Post review discovery of a cultural resource not previously identified in project review and after project approval and initiation.

1. In the event cultural resource(s) are discovered in the implementation of a previously approved undertaking, the individual making the discovery shall notify the CRM within 24 hours.
 2. The CRM shall ensure that all work ceases in the immediate vicinity (within an approximate 20 meter radius) to protect the newly identified cultural resource(s) within 48 hours of the discovery. The cease-work area shall be marked with flags or visibility tape to clearly delineate the boundaries as appropriate.
 3. The CRM shall determine if the cultural resource(s) is/are eligible to the NRHP and notify the SHPO of the determination via phone within 72 hours of the discovery. If the SHPO concurs on non-eligibility of the cultural resource, USAG YPG has no further obligations under this stipulation.
 4. If the cultural resource is determined to be a historic property, in consultation with the SHPO, the CRM shall prepare and send a notification package to the SHPO and Tribes including a summary of the undertaking and how it was previously reviewed under this PA, an illustration of the cease-work area, a list of identified historic properties within the cease-work area, and the treatment plan to address effects within four days of the SHPO's concurrence on NRHP eligibility.
 - a) The Tribes are under no obligation to provide comments on the post review discovery; however, if they wish USAG YPG to consider their comments, Tribes should submit comments in writing within two days of receipt. If no comments are received within that time, the CRM shall make a second attempt to contact the Tribes for comments. USAG YPG shall take any tribal comments received into consideration and will notify the SHPO of any tribal concerns and the USAG YPG response to those concerns.
 - b) The SHPO shall provide a response to USAG YPG regarding the post review discovery within two days of receipt of all pertinent documentation. If no comments are received within that time, the CRM shall make a second attempt to contact the SHPO for comments.
 5. USAG YPG shall include an after action report regarding the post review discovery treatment plan in the Annual Report.
- B. Post review discovery of an effect not previously identified in project review and after project approval and initiation.
1. In the event effects to historic properties are discovered in the implementation of a previously approved undertaking, the individual making the discovery shall notify the CRM within 24 hours.
 2. The CRM shall ensure that all work ceases in the immediate vicinity (within an approximate 20 meter radius) to protect the newly identified historic properties within 48 hours of the discovery. The cease-work area shall be marked with flags or visibility tape to clearly delineate the boundaries as appropriate.
 3. The CRM shall determine if the effect is adverse and notify the SHPO of the determination via phone within 72 hours of the discovery. If the SHPO concurs with a no adverse effect finding, USAG YPG has no further obligations under this stipulation.

4. If the effect is determined to be adverse, in consultation with the SHPO, the CRM shall prepare and send a notification package for the SHPO and Tribes including a summary of the undertaking and how it was previously reviewed under this PA, an illustration of the cease-work area, a list of identified historic properties within the cease-work area, and the treatment plan to address effects within four days of the discovery.
 - a) The Tribes are under no obligation to provide comments on the post review discovery; however, if they wish USAG YPG to consider their comments, Tribes should submit comments in writing within two days of receipt. If no comments are received within that time, the CRM shall make a second attempt to contact the Tribes for comments. USAG YPG shall take any tribal comments received into consideration and will notify the SHPO of any tribal concerns and the USAG YPG response to those concerns.
 - b) The SHPO shall provide a response to USAG YPG regarding the post review discovery within two days of receipt of all pertinent documentation. If no comments are received within that time, the CRM shall make a second attempt to contact the SHPO for comments.
5. USAG YPG shall include an after action report regarding the post review discovery treatment plan in the Annual Report.

VI. Discovery of Human Remains in the Execution of a Previously Approved Undertaking

- A. If human remains are identified, including evidence of cremation, in the implementation of a previously approved undertaking, all activity shall immediately cease in the immediate area of the discovery. The individual making the discovery shall immediately notify the USAG YPG Garrison Manager and CRM. The CRM shall establish a minimum 20 meter radius around the area of discovery, which will be flagged and/or marked with visibility tape to protect the remains from further disturbance.
 1. If the remains appear to be the victim of a recent crime or accidental death, the USAG YPG Garrison Manager or CRM shall contact the appropriate authorities (military law enforcement, medical examiner, YPG Command Judge Advocate) immediately and notify them of the discovery.
 2. If the remains are determined to be Native American in origin, USAG YPG shall follow the requirements of the Native American Graves Protection and Repatriation Act (NAGPRA) and its implementing regulations, 43 CFR Part 10.
 - a) The USAG YPG Garrison Manager shall initiate consultation with any known lineal descendants and culturally affiliated tribes by telephone notification and written confirmation within three working days.
 - b) USAG YPG shall consult with the appropriate lineal descendants and culturally affiliated tribes on a written plan of action to address the remains.
 - c) USAG YPG shall determine if the undertaking can be relocated.

- d) If USAG YPG determines that relocation of the undertaking is feasible, then the undertaking shall be relocated to avoid the remains, and USAG YPG, in consultation with the lineal descendants and culturally affiliated tribes, shall decide on the best treatment for the remains, including in situ preservation.
 - e) USAG YPG shall provide the SHPO a summary of the NAGPRA consultation within 30 days of the consultation's conclusion.
3. If the remains are not Native American and do not warrant criminal investigation but are historic in nature, the CRM shall notify the SHPO within three days and shall consult to identify descendants or other interested parties, if any. USAG YPG, in consultation with SHPO and any interested parties, shall develop a plan for the respectful treatment and disposition of the remains within 180 days of the discovery.

VII. Emergency Situations

- A. Emergency situations are those deemed necessary by USAG YPG as an immediate and direct response to a disaster or emergency declared by the President of the United States or Governor of Arizona, or other immediate threat to life or property. Emergency situations under this PA are only those implemented within 30 days from the declared disaster or emergency unless an extension is granted.
- B. USAG YPA shall notify the SHPO via telephone within 48 hours of commencing the emergency situation.
- C. USAG YPG shall include a summary of all emergency situations in the Annual Report.
- D. Immediate rescue and salvage operations to preserve life or property are exempt from Section 106 of the NHPA and are outside the scope of this PA.

VIII. Annual Report and Review

- A. USAG YPG shall prepare an annual report and distribute it to all Consulting Parties, except the ACHP, within 75 days of each new fiscal year in Fiscal Year 2016. The report shall include, but is not limited to, the following:
 - 1. A list of negative survey reports produced;
 - 2. A list of surveys with identified cultural resources;
 - 3. A list of newly identified historic properties (updated Attachment B);
 - 4. A list of undertakings that were reviewed but had no effect on historic properties;
 - 5. A list of undertakings that were reviewed but had no adverse effect on historic properties;
 - 6. A list of undertakings that had an adverse effect on historic properties along with their mitigation;
 - 7. A list of all inadvertent discoveries;

8. Proposed USAG YPG cultural resources program activities or changes;
 9. A list of any newly proposed undertakings; and
 10. Any changes USAG YPG might consider toward improvement in implementation of any stipulations.
- B. Consulting Parties should provide comments to USAG YPG regarding the Annual Report within 30 days of receipt.
 - C. USAG YPG shall ensure that the public is made aware of the availability of the Annual Report on its website, and that interested members of the public are invited to provide comments to the USAG YPG.
 - D. USAG YPG shall hold an annual meeting with the Consulting Parties to review the implementation of this PA and any amendments that may be proposed no later than February 15th, starting 2016 and annually thereafter during the life of this PA. The meeting shall provide an opportunity to discuss the successes and shortcomings of the PA, its general implementation, and any proposed changes, including consideration of exempting activities that result in a finding of no adverse effect.

IX. Dispute Resolution

- A. Should any signatory or Consulting Party to this PA object at any time to any actions proposed or the manner in which the terms of this PA are implemented, USAG YPG shall consult with such party to resolve the objection. If USAG YPG determines that such objection cannot be resolved, USAG YPG will:
 1. Forward all documentation relevant to the dispute, including USAG YPG's proposed resolution, to the ACHP. The ACHP shall provide USAG YPG with its opinion on the resolution of the objection within 30 days of receiving adequate documentation. Prior to reaching a final decision on the dispute, USAG YPG shall prepare a written response that takes into account any timely opinion or comments regarding the dispute from the ACHP, signatories and Consulting Parties, and provide them with a copy of this written response. USAG YPG will then proceed according to its final decision.
 2. If the ACHP does not provide its comments regarding the dispute within the 30 day time period, USAG YPG may make a final decision on the dispute and proceed accordingly. Prior to reaching such a final decision, USAG YPG shall prepare a written response that takes into account any timely comments regarding the dispute from the signatories and Consulting Parties to the PA, and provide them and the ACHP with a copy of such written response.
- B. The responsibilities of USAG YPG to carry out all other actions subject to the terms of this PA that are not the subject of the dispute remain unchanged.

- C. At any time during implementation of the measures stipulated in this PA, should an objection pertaining to this PA or the effect of an undertaking on historic properties be raised by a member of the public, USAG YPG shall notify the parties to this PA and take the objection into account, consulting with the objector and, should the objector so request, with any of the parties to this PA to resolve the objection.

X. Amendments

- A. This PA may be amended when such an amendment is agreed to in writing by all signatories. Any signatory to this PA may propose an amendment in writing to USAG YPG.
- B. USAG YPG shall consult with the signatories to this PA to consider the proposed amendment. If there is agreement among all signatories, the document shall be amended accordingly and the amendment will be effective on the date a copy signed by all of the signatories is filed with the ACHP.

XI. Termination

- A. If a signatory to this PA determines it is not being implemented in accordance with its terms, that party may propose that the agreement be terminated.
- B. The party proposing termination shall notify all signatories, explain the reasons for the proposed termination, and afford all signatories 30 days from receipt of the notification to consult and seek alternatives to termination. The consultation shall include all signatories, concurring parties, and any other parties that may be affected by the termination.
- C. If the consultation fails to find alternatives to termination, then any signatory may terminate the PA upon written notification to the other signatories, concurring parties, and other consulting parties in writing that this PA is terminated.
- D. Once the PA is terminated, and prior to work continuing on any undertaking, USAG YPG must either (a) execute a MOA pursuant to 36 CFR § 800.6, or (b) request, take into account, and respond to the comments of the ACHP under 36 CFR § 800.7. USAG YPG shall notify the signatories as to the course of action it will pursue.

XII. Monitoring

The SHPO and the ACHP may monitor any activities carried out pursuant to this PA, and the ACHP will review any activities if so requested. The USAG YPG Garrison Manager will cooperate with the SHPO and the ACHP should they request to monitor or to review project files for activities carried out pursuant to this PA.

XIII. Duration

- A. This PA will become effective on the date of the final signature and continue in force for 10 years.

- B. At least six months prior to the end of the 10 year period, the signatories shall consult to determine whether this PA remains satisfactory. If there is agreement, USAG YPG will revise and update the PA as needed, and consult with all signatories, concurring parties, and any parties that may become additional concurring parties. The updated agreement will be signed and executed by all signatories prior to the expiration of the 10 year period.
- C. If an extension of time is warranted, all signatories will agree in writing until such time as this PA may be revised and updated.

XIV. Anti-Deficiency Act

USAG YPG's obligations under this PA are subject to the availability of funds and the stipulations of this PA are subject to the provisions of the Anti-Deficiency Act. USAG YPG will make reasonable and good faith efforts to secure the necessary funds to implement this PA in its entirety. If compliance with the Anti-Deficiency Act alters or impairs USAG YPG's ability to implement the stipulations of this PA, USAG YPG will consult with the SHPO and ACHP in accordance with the amendment and termination procedures in stipulations X and XI.

Execution of this PA by USAG YPG, the SHPO, and the ACHP and implementation of its terms evidence that USAG YPG has taken into account the effects of this undertaking on historic properties and afforded the ACHP a reasonable opportunity to comment.

SIGNATORIES:

U.S. Army Yuma Proving Ground


Gordon K. Rogers, Garrison Manager, U.S. Army Garrison, Yuma

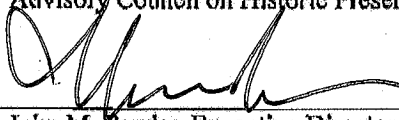
Date 27 OCT 2014

Arizona State Historic Preservation Officer


James W. Garrison, State Historic Preservation Officer

Date 10/31/14

Advisory Council on Historic Preservation



for John M. Fowler, Executive Director

Date 11/17/14

**PROGRAMMATIC AGREEMENT
AMONG
THE UNITED STATES ARMY GARRISON, YUMA PROVING GROUND,
THE ARIZONA STATE HISTORIC PRESERVATION OFFICER, AND
THE ADVISORY COUNCIL ON HISTORIC PRESERVATION
REGARDING THE
OPERATIONS, MAINTENANCE, AND DEVELOPMENT OF
YUMA PROVING GROUND, ARIZONA**

CONCURRING PARTIES:

Bureau of Land Management, Yuma Field Office



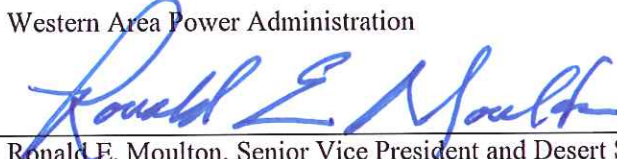
John D. MacDonald, Field Manager

Date: 12.22.14

**PROGRAMMATIC AGREEMENT
AMONG
THE UNITED STATES ARMY GARRISON, YUMA PROVING GROUND,
THE ARIZONA STATE HISTORIC PRESERVATION OFFICER, AND
THE ADVISORY COUNCIL ON HISTORIC PRESERVATION
REGARDING THE
OPERATIONS, MAINTENANCE, AND DEVELOPMENT OF
YUMA PROVING GROUND, ARIZONA**

CONCURRING PARTIES:

Western Area Power Administration



Ronald E. Moulton, Senior Vice President and Desert Southwest
Regional Manager

Date:

1/9/15

**PROGRAMMATIC AGREEMENT
AMONG
THE UNITED STATES ARMY GARRISON, YUMA PROVING GROUND,
THE ARIZONA STATE HISTORIC PRESERVATION OFFICER, AND
THE ADVISORY COUNCIL ON HISTORIC PRESERVATION
REGARDING THE
OPERATIONS, MAINTENANCE, AND DEVELOPMENT OF
YUMA PROVING GROUND, ARIZONA**

CONCURRING PARTIES:

Ak-Chin Indian Community

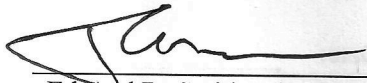
Louis J. Manuel, Jr., Chairman

Date: _____

**PROGRAMMATIC AGREEMENT
AMONG
THE UNITED STATES ARMY GARRISON, YUMA PROVING GROUND,
THE ARIZONA STATE HISTORIC PRESERVATION OFFICER, AND
THE ADVISORY COUNCIL ON HISTORIC PRESERVATION
REGARDING THE
OPERATIONS, MAINTENANCE, AND DEVELOPMENT OF
YUMA PROVING GROUND, ARIZONA**

CONCURRING PARTIES:

Chemehuevi Indian Tribe



Edward D. Smith, Chairman

Date:

1/27/15

Jay Cravath for Edward Smith

**PROGRAMMATIC AGREEMENT
AMONG
THE UNITED STATES ARMY GARRISON, YUMA PROVING GROUND,
THE ARIZONA STATE HISTORIC PRESERVATION OFFICER, AND
THE ADVISORY COUNCIL ON HISTORIC PRESERVATION
REGARDING THE
OPERATIONS, MAINTENANCE, AND DEVELOPMENT OF
YUMA PROVING GROUND, ARIZONA**

CONCURRING PARTIES:

Cocopah Indian Tribe

Sherry Cordova, Chairwoman

Date: _____

**PROGRAMMATIC AGREEMENT
AMONG
THE UNITED STATES ARMY GARRISON, YUMA PROVING GROUND,
THE ARIZONA STATE HISTORIC PRESERVATION OFFICER, AND
THE ADVISORY COUNCIL ON HISTORIC PRESERVATION
REGARDING THE
OPERATIONS, MAINTENANCE, AND DEVELOPMENT OF
YUMA PROVING GROUND, ARIZONA**

CONCURRING PARTIES:

Colorado River Indian Tribes

Wayne Patch, Chairman

Date: _____

**PROGRAMMATIC AGREEMENT
AMONG
THE UNITED STATES ARMY GARRISON, YUMA PROVING GROUND,
THE ARIZONA STATE HISTORIC PRESERVATION OFFICER, AND
THE ADVISORY COUNCIL ON HISTORIC PRESERVATION
REGARDING THE
OPERATIONS, MAINTENANCE, AND DEVELOPMENT OF
YUMA PROVING GROUND, ARIZONA**

CONCURRING PARTIES:

Fort McDowell Yavapai Nation

Ruben Balderas, President

Date: _____

**PROGRAMMATIC AGREEMENT
AMONG
THE UNITED STATES ARMY GARRISON, YUMA PROVING GROUND,
THE ARIZONA STATE HISTORIC PRESERVATION OFFICER, AND
THE ADVISORY COUNCIL ON HISTORIC PRESERVATION
REGARDING THE
OPERATIONS, MAINTENANCE, AND DEVELOPMENT OF
YUMA PROVING GROUND, ARIZONA**

CONCURRING PARTIES:

Fort Mojave Indian Tribe

Timothy Williams, Chairman

Date: _____

**PROGRAMMATIC AGREEMENT
AMONG
THE UNITED STATES ARMY GARRISON, YUMA PROVING GROUND,
THE ARIZONA STATE HISTORIC PRESERVATION OFFICER, AND
THE ADVISORY COUNCIL ON HISTORIC PRESERVATION
REGARDING THE
OPERATIONS, MAINTENANCE, AND DEVELOPMENT OF
YUMA PROVING GROUND, ARIZONA**

CONCURRING PARTIES:

Gila River Indian Community

Gregory Mendoza, Governor

Date: _____

**PROGRAMMATIC AGREEMENT
AMONG
THE UNITED STATES ARMY GARRISON, YUMA PROVING GROUND,
THE ARIZONA STATE HISTORIC PRESERVATION OFFICER, AND
THE ADVISORY COUNCIL ON HISTORIC PRESERVATION
REGARDING THE
OPERATIONS, MAINTENANCE, AND DEVELOPMENT OF
YUMA PROVING GROUND, ARIZONA**

CONCURRING PARTIES:

Hopi Tribe

Herman G. Honanie, Chairman

Date: _____

**PROGRAMMATIC AGREEMENT
AMONG
THE UNITED STATES ARMY GARRISON, YUMA PROVING GROUND,
THE ARIZONA STATE HISTORIC PRESERVATION OFFICER, AND
THE ADVISORY COUNCIL ON HISTORIC PRESERVATION
REGARDING THE
OPERATIONS, MAINTENANCE, AND DEVELOPMENT OF
YUMA PROVING GROUND, ARIZONA**

CONCURRING PARTIES:

Quechan Indian Tribe

Keeny Escalanti, President

Date: _____

**PROGRAMMATIC AGREEMENT
AMONG
THE UNITED STATES ARMY GARRISON, YUMA PROVING GROUND,
THE ARIZONA STATE HISTORIC PRESERVATION OFFICER, AND
THE ADVISORY COUNCIL ON HISTORIC PRESERVATION
REGARDING THE
OPERATIONS, MAINTENANCE, AND DEVELOPMENT OF
YUMA PROVING GROUND, ARIZONA**

CONCURRING PARTIES:

Salt River Pima-Maricopa Indian Community

Diane Enos, Chairwoman

Date: _____

**PROGRAMMATIC AGREEMENT
AMONG
THE UNITED STATES ARMY GARRISON, YUMA PROVING GROUND,
THE ARIZONA STATE HISTORIC PRESERVATION OFFICER, AND
THE ADVISORY COUNCIL ON HISTORIC PRESERVATION
REGARDING THE
OPERATIONS, MAINTENANCE, AND DEVELOPMENT OF
YUMA PROVING GROUND, ARIZONA**

CONCURRING PARTIES:

San Carlos Apache Tribe

Terry Rambler, Chairman

Date: _____

**PROGRAMMATIC AGREEMENT
AMONG
THE UNITED STATES ARMY GARRISON, YUMA PROVING GROUND,
THE ARIZONA STATE HISTORIC PRESERVATION OFFICER, AND
THE ADVISORY COUNCIL ON HISTORIC PRESERVATION
REGARDING THE
OPERATIONS, MAINTENANCE, AND DEVELOPMENT OF
YUMA PROVING GROUND, ARIZONA**

CONCURRING PARTIES:

Tohono O'odham Nation

Ned Norris, Jr., Chairman

Date: _____

**PROGRAMMATIC AGREEMENT
AMONG
THE UNITED STATES ARMY GARRISON, YUMA PROVING GROUND,
THE ARIZONA STATE HISTORIC PRESERVATION OFFICER, AND
THE ADVISORY COUNCIL ON HISTORIC PRESERVATION
REGARDING THE
OPERATIONS, MAINTENANCE, AND DEVELOPMENT OF
YUMA PROVING GROUND, ARIZONA**

CONCURRING PARTIES:

Yavapai-Apache Nation


Thomas Beauty, Chairman

Date: _____

**PROGRAMMATIC AGREEMENT
AMONG
THE UNITED STATES ARMY GARRISON, YUMA PROVING GROUND,
THE ARIZONA STATE HISTORIC PRESERVATION OFFICER, AND
THE ADVISORY COUNCIL ON HISTORIC PRESERVATION
REGARDING THE
OPERATIONS, MAINTENANCE, AND DEVELOPMENT OF
YUMA PROVING GROUND, ARIZONA**

CONCURRING PARTIES:

Yavapai-Prescott Indian Tribe



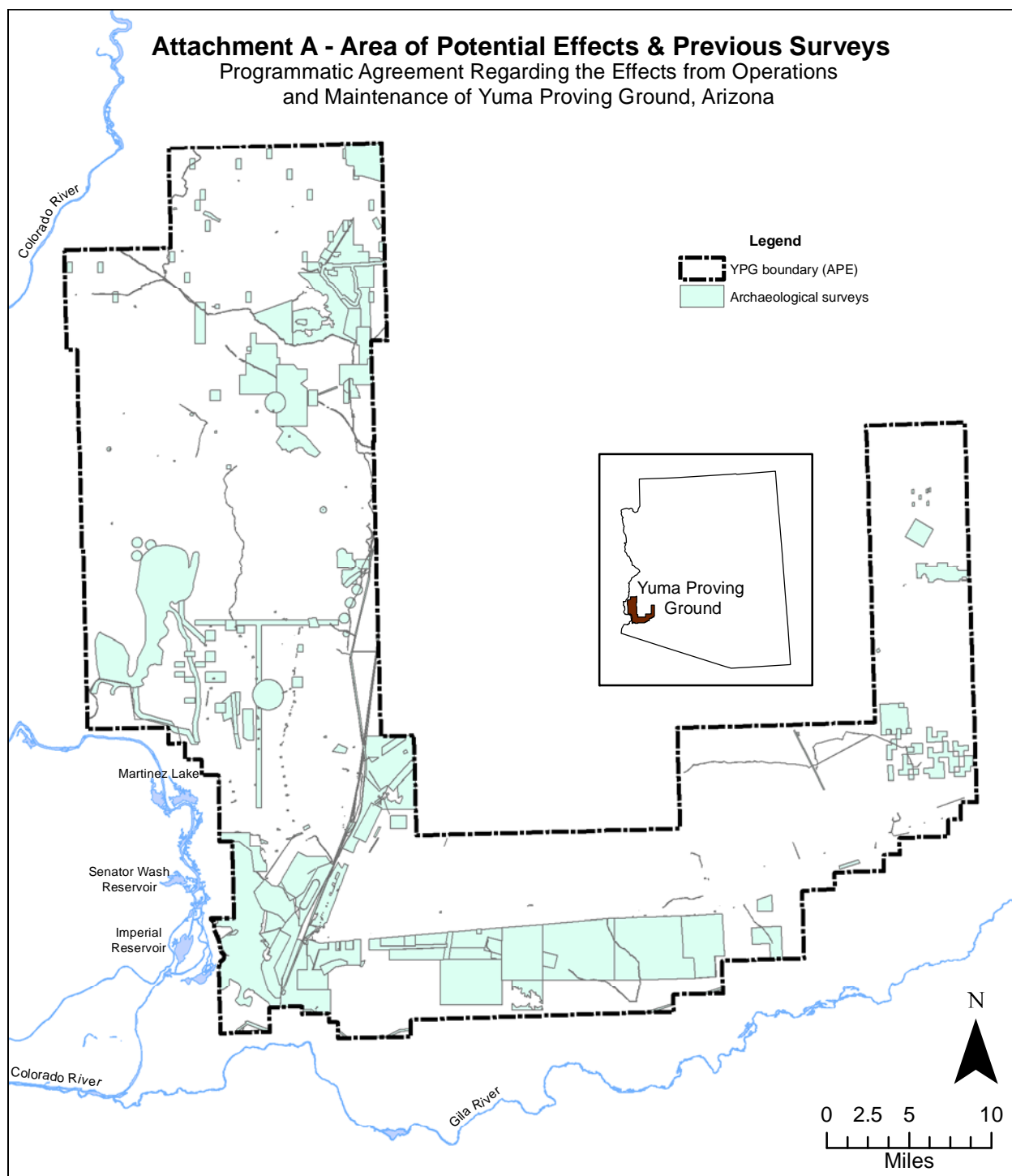
Ernest Jones, Sr., President

Date:

13 Nov 15

LIST OF ATTACHMENTS

- Attachment A – Area of Potential Effects & Previous Surveys
- Attachment B – Yuma Proving Ground List of Identified Historic Properties
- Attachment C – Impact Areas, Other Contaminated Areas, & Previously Disturbed Areas
- Attachment D – Impact Areas, Other Contaminated Areas, & Previously Disturbed Areas Overlain with Areas Previously Surveyed for Cultural Resources at YPG
- Attachment E – List of Acronyms and Definitions
- Attachment F – Standard Operating Procedure #5 of the USAG YPG ICRMP for “Inadvertent Discovery of Archaeological Deposits”
- Attachment G – Lands No Longer Requiring Cultural Resources Survey
- Attachment H – Exempted Undertakings



Yuma Proving Ground List of Identified Historic Properties

Site Number	Primary Site Type
Direct Fire Range and Ammunition Storage, Handling, and Testing Facilities District Eligible Sites SHPO letter 11/29/92 (Gasser to Vander Zyl)	
AZ X:4:66(ASM)	Cleared area
AZ X:4:46(ASM)	Rock ring
AZ X:4:47(ASM)	Cleared area, rock cluster, lithic scatter
AZ X:4:50(ASM)	Cleared area
AZ X:4:52(ASM)	Cleared area
AZ X:4:53(ASM)	Cleared area, rock cluster, lithic scatter
AZ X:4:54(ASM)	Cleared area
AZ X:4:55(ASM)	Cleared area
AZ X:4:56(ASM)	Cleared area
AZ X:4:57(ASM)	Cleared area
AZ X:4:58(ASM)	Cleared area
AZ X:4:59(ASM)	Rock rings
AZ X:4:48(ASM)	Cleared area
AZ X:4:49(ASM)	Cleared area, rock cluster, lithic scatter
AZ X:4:51(ASM)	Cleared area
AZ-050-1202	Cleared areas
AZ-050-1204	Lithic scatter
AZ-050-1205	Rock ring
AZ X:4:63(ASM)	Rock clusters
AZ X:4:65(ASM)	Rock ring, rock cluster
AZ X:4:67(ASM)	Cleared area
AZ X:4:68(ASM)	Cleared area
AZ X:3:108(ASM)	Cleared area
AZ X:3:109(ASM)	Cleared area
AZ X:3:87(ASM)	Cleared area
AZ X:3:88(ASM)	Cleared area
AZ X:3:90(ASM)	Cleared area
AZ X:3:91(ASM)	Cleared area
AZ X:4:34(ASM)	Cleared area
AZ X:4:35(ASM)	Cleared area
AZ X:4:36(ASM)	Cleared area
AZ X:4:38(ASM)	Cleared area
AZ X:4:39(ASM)	Cleared area
AZ X:4:40(ASM)	Cleared area
AZ X:4:43(ASM)	Cleared area
AZ X:4:45(ASM)	Cleared area
AZ X:3:92(ASM)	Cleared area
AZ X:3:93(ASM)	Cleared area
AZ X:3:94(ASM)	Cleared area
AZ X:3:95(ASM)	Cleared area
AZ X:3:96(ASM)	Cleared area
AZ X:3:97(ASM)	Cleared area
AZ X:3:98(ASM)	Cleared area
AZ X:3:100(ASM)	Cleared area
AZ X:3:101(ASM)	Rock cluster
AZ X:3:102(ASM)	Rock cluster
AZ X:3:103(ASM)	Cleared area
AZ X:3:104(ASM)	Cleared area
AZ X:3:105(ASM)	Cleared area

Site Number	Primary Site Type
AZ X:3:106(ASM)	Rock cluster
AZ X:3:107(ASM)	Cleared area
AZ X:4:62(ASM)	Cleared area
AZ X:4:60(ASM)	Rock ring
AZ X:4:61(ASM)	Cleared area
AZ X:4:64(ASM)	Cleared area
AZ X:3:504(ASM)	Cleared area
White Tanks Management Area District Eligible Sites SHPO letter 9/24/92 (Hoffman to Vander Zyl)	
AZ S:14:10(ASM)	Lithic scatter
AZ S:14:11(ASM)	Lithic scatter
AZ S:14:12(ASM)	Cleared area
AZ S:14:13(ASM)	Lithic scatter
AZ S:14:14(ASM)	Lithic scatter
AZ S:14:15(ASM)	Lithic scatter
AZ S:14:16(ASM)	Quarry
AZ S:14:17(ASM)	Quarry
AZ S:14:18(ASM)	Lithic scatter
AZ S:14:19(ASM)	Rockshelter
AZ S:14:20(ASM)	Lithic scatter
AZ S:14:21(ASM)	Lithic scatter
AZ S:14:22(ASM)	Lithic scatter
AZ S:14:23(ASM)	Lithic scatter
AZ S:14:24(ASM)	Rock cluster/pile
AZ S:14:25(ASM)	Rockshelter
AZ S:14:26(ASM)	Lithic scatter
AZ S:14:27(ASM)	Lithic scatter
AZ S:14:28(ASM)	Lithic scatter
AZ S:14:29(ASM)	Rockshelter
AZ S:14:30(ASM)	Lithic scatter
AZ S:14:31(ASM)	Rockshelter
AZ S:14:32(ASM)	Rock cairns, lithic & ceramic scatter
AZ S:14:33(ASM)	Rock alignment
AZ S:14:34(ASM)	Quarry
AZ S:14:35(ASM)	Quarry
AZ S:14:36(ASM)	Lithic & ceramic scatter
AZ S:14:37(ASM)	Lithic scatter
AZ S:14:38(ASM)	Quarry
AZ S:14:39(ASM)	Lithic scatter
AZ S:14:40(ASM)	Lithic scatter
AZ S:14:41(ASM)	Lithic scatter
AZ S:14:42(ASM)	Rockshelter
AZ S:14:43(ASM)	Rockshelter
AZ S:14:44(ASM)	Rockshelter
AZ S:14:45(ASM)	Rockshelter
AZ S:14:46(ASM)	Rockshelter
AZ S:14:47(ASM)	Rockshelter
AZ S:14:48(ASM)	Rockshelter
AZ S:14:49(ASM)	Lithic & ceramic scatter
AZ S:14:50(ASM)	Quarry
AZ S:14:51(ASM)	Lithic scatter
AZ S:14:52(ASM)	Historic Malcolm Rogers camp
AZ S:14:53(ASM)	Rock ring
AZ S:14:54(ASM)	Rock ring

Yuma Proving Ground List of Identified Historic Properties

Site Number	Primary Site Type
AZ S:14:55(ASM)	Trail segment
Yuma Wash District Eligible Sites SHPO letter 11/8/93 (Gasser to Vander Zyl)	
AZ R:14:20(ASM)	Cleared area
AZ R:14:21(ASM)	Lithic scatter
AZ R:14:22(ASM)	Cleared area
AZ R:14:23(ASM)	Cleared area, compressed gravel area
AZ R:14:24(ASM)	Cleared area
AZ R:14:25(ASM)	Cleared area, rock ring
AZ R:14:26(ASM)	Cleared area
AZ R:14:27(ASM)	Cleared area, rock ring
AZ R:14:28(ASM)	Cleared area, rock ring
AZ R:14:29(ASM)	Rock ring
AZ R:14:30(ASM)	Rock ring, rock cluster, cleared area
AZ R:14:31(ASM)	Cleared area
AZ R:14:32(ASM)	Cleared area
AZ R:14:33(ASM)	Cleared area
AZ R:14:34(ASM)	Cleared area
AZ R:14:35(ASM)	Cleared area
AZ R:14:36(ASM)	Cleared areas
AZ R:14:37(ASM)	Cleared areas
AZ R:14:38(ASM)	Cleared areas
AZ R:14:39(ASM)	Cairn, rock clusters, cleared areas
AZ R:14:40(ASM)	Cleared areas
AZ R:14:41(ASM)	Rock rings, rock clusters
AZ R:14:42(ASM)	Cleared area
AZ R:14:43(ASM)	Cleared area
AZ R:14:44(ASM)	Cleared area
AZ R:14:45(ASM)	Cleared area
AZ R:14:46(ASM)	Cleared area
AZ R:14:47(ASM)	Cleared areas
AZ R:14:48(ASM)	Cleared area
AZ R:14:49(ASM)	Rock cairn
AZ R:14:50(ASM)	Rock pile, cleared areas
AZ R:14:51(ASM)	Cleared area
AZ R:14:52(ASM)	Cleared areas
AZ R:14:53(ASM)	Cleared areas, rock cluster
AZ R:14:54(ASM)	Cleared areas, rock clusters
AZ R:14:55(ASM)	Trail segment
AZ R:14:56(ASM)	Cleared areas, rock ring
AZ R:14:57(ASM)	Cleared areas, compressed gravel area, rock rings
AZ R:14:58(ASM)	Cleared area, rock ring
AZ R:14:59(ASM)	Cleared areas
AZ R:14:60(ASM)	Cleared areas
AZ R:14:61(ASM)	Cleared areas
AZ R:14:62(ASM)	Cleared areas
AZ R:14:63(ASM)	Cleared area
AZ R:14:64(ASM)	Cleared areas, compressed gravel areas
AZ R:14:65(ASM)	Cleared areas
AZ R:14:66(ASM)	Cleared area
AZ R:14:67(ASM)	Cleared areas, rock rings,

Site Number	Primary Site Type
	compressed gravel area
AZ R:14:68(ASM)	Cleared areas, rock rings
AZ R:14:69(ASM)	Cleared areas
AZ R:14:70(ASM)	Cleared areas
AZ R:14:71(ASM)	Cleared areas, compressed gravel areas
AZ R:14:72(ASM)	Cleared areas, rock ring, rock clusters
AZ R:14:73(ASM)	Cleared areas
AZ R:14:74(ASM)	Rock rings, compressed gravel areas, cleared area
AZ R:14:75(ASM)	Cleared areas, rock ring?
AZ R:14:76(ASM)	Cleared areas, rock rings, compressed gravel areas
AZ R:14:77(ASM)	Cleared areas, rock rings, clusters
AZ R:14:78(ASM)	Cleared area
AZ R:14:79(ASM)	Cleared areas, rock clusters
AZ R:14:80(ASM)	Rock rings, rock clusters, compressed gravel areas
AZ R:14:81(ASM)	Cleared areas, compressed gravel areas, rock ring
AZ R:14:82(ASM)	Rock ring
AZ R:14:83(ASM)	Cleared areas, rock clusters
AZ R:14:84(ASM)	Lithic scatter
AZ R:14:85(ASM)	Cleared area
AZ R:14:86(ASM)	Cleared area
AZ R:14:87(ASM)	Cleared areas
AZ R:14:88(ASM)	Trail segment
AZ R:14:89(ASM)	Rock ring, rock clusters
AZ R:14:90(ASM)	Cleared area
AZ R:14:91(ASM)	Lithic scatter
AZ R:14:92(ASM)	Lithic scatter
AZ R:14:93(ASM)	Cleared areas
AZ R:14:94(ASM)	Cleared areas
AZ R:14:96(ASM)	Cleared areas, rock clusters, rock cairn
AZ R:14:97(ASM)	Cleared areas
AZ R:14:98(ASM)	Cleared areas, rock clusters
AZ R:14:99(ASM)	Cleared areas, rock clusters
AZ R:14:100(ASM)	Cleared areas, rock clusters
AZ R:14:101(ASM)	Cleared areas, rock clusters
AZ R:14:102(ASM)	Cleared areas, compressed gravel areas
AZ R:14:103(ASM)	Cleared areas, rock rings, alignments, clusters
AZ R:14:106(ASM)	Cleared areas
AZ R:14:107(ASM)	Cleared areas, compressed gravel areas
AZ R:14:108(ASM)	Cleared area
AZ R:14:109(ASM)	Cleared areas
AZ R:14:110(ASM)	Cleared areas
AZ R:14:111(ASM)	Cleared areas
AZ R:14:112(ASM)	Cleared areas, rock clusters
AZ R:14:113(ASM)	Lithic & ceramic scatter
AZ R:14:114(ASM)	Cleared area
AZ R:14:115(ASM)	Rock rings
AZ R:14:116(ASM)	Cleared area

Yuma Proving Ground List of Identified Historic Properties

Site Number	Primary Site Type
AZ R:14:117(ASM)	Cleared areas
AZ R:14:118(ASM)	Cleared areas
AZ R:14:119(ASM)	Cleared area
AZ R:14:120(ASM)	Cleared areas
AZ R:14:121(ASM)	Rock clusters
AZ R:14:122(ASM)	Rock ring
AZ R:14:123(ASM)	Rock ring
AZ R:14:124(ASM)	Cleared areas, rock clusters
AZ R:14:125(ASM)	Cleared area
AZ R:14:126(ASM)	Rock ring
AZ R:14:127(ASM)	Cleared area
AZ R:14:128(ASM)	Rock ring
AZ R:14:129(ASM)	Rock clusters
AZ R:14:130(ASM)	Cleared area
AZ R:14:131(ASM)	Rock ring
AZ R:14:132(ASM)	Rock clusters
AZ R:14:133(ASM)	Rock ring
AZ R:14:134(ASM)	Cleared area
AZ R:14:135(ASM)	Rock ring
AZ R:14:136(ASM)	Rock ring
AZ R:14:137(ASM)	Cleared areas
AZ R:14:138(ASM)	Rock rings
AZ R:14:139(ASM)	Cleared areas
AZ R:14:140(ASM)	Rock ring
AZ R:14:141(ASM)	Rock ring
AZ R:14:144(ASM)	Cleared areas
AZ R:14:145(ASM)	Cleared area
AZ R:14:146(ASM)	Rock ring
AZ R:14:147(ASM)	Cleared area
AZ R:14:148(ASM)	Rock rings
AZ R:14:149(ASM)	Rock ring
AZ R:14:150(ASM)	Cleared areas
AZ R:14:151(ASM)	Possible cleared area (impact crater?)
AZ R:14:152(ASM)	Rock ring
AZ R:14:153(ASM)	Cleared areas
AZ R:14:154(ASM)	Cleared area
AZ R:14:155(ASM)	Cleared area
AZ R:14:156(ASM)	Cleared area
AZ R:14:157(ASM)	Cleared areas
AZ R:14:158(ASM)	Rock alignments
AZ R:14:159(ASM)	Cleared area
AZ R:14:160(ASM)	Cleared area
AZ R:14:161(ASM)	Cleared area
AZ R:14:162(ASM)	Cleared area
AZ R:14:163(ASM)	Rock ring, rock clusters
AZ R:14:164(ASM)	Rock clusters
AZ R:14:165(ASM)	Rock cluster
AZ R:14:166(ASM)	Rock ring
AZ R:14:167(ASM)	Cleared area
AZ R:14:168(ASM)	Cleared area
AZ R:14:169(ASM)	Rock rings
AZ R:14:170(ASM)	Rock alignments
AZ R:14:171(ASM)	Rock ring
AZ R:14:172(ASM)	Cleared areas
AZ R:14:173(ASM)	Rock ring
AZ R:14:174(ASM)	Rock ring

Site Number	Primary Site Type
AZ R:14:175(ASM)	Rock ring
AZ R:14:176(ASM)	Rock ring
AZ R:14:177(ASM)	Cleared areas
AZ R:14:178(ASM)	Cleared area
AZ R:14:179(ASM)	Cleared areas
AZ R:14:180(ASM)	Rock cluster
AZ R:14:181(ASM)	Rock ring
AZ R:14:182(ASM)	Rock cluster
AZ R:14:183(ASM)	Rock ring
AZ R:14:184(ASM)	Rock ring
AZ R:14:185(ASM)	Cleared area
AZ R:14:186(ASM)	Rock cluster
AZ R:14:187(ASM)	Rock clusters
AZ R:14:188(ASM)	Rock ring
AZ R:14:189(ASM)	Rock ring
AZ R:14:190(ASM)	Rock ring
AZ R:14:191(ASM)	Cleared area
AZ R:14:192(ASM)	Rock ring, rock clusters
AZ R:14:193(ASM)	Cleared area
AZ R:14:194(ASM)	Rock cluster
AZ R:14:195(ASM)	Cleared areas
AZ R:14:196(ASM)	Cleared areas
AZ R:14:197(ASM)	Cleared area
AZ R:14:198(ASM)	Cleared areas
AZ R:14:199(ASM)	Cleared areas
AZ R:14:200(ASM)	Cleared area
AZ R:14:201(ASM)	Cleared areas
AZ R:14:202(ASM)	Cleared area
AZ R:14:203(ASM)	Cleared areas
AZ R:14:204(ASM)	Rock ring
AZ R:14:205(ASM)	Cleared areas
AZ R:14:206(ASM)	Cleared area
AZ R:14:207(ASM)	Cleared area
AZ R:14:208(ASM)	Rock ring
AZ R:14:209(ASM)	Cleared areas
AZ R:14:210(ASM)	Cleared areas
AZ R:14:211(ASM)	Rock ring
AZ R:14:212(ASM)	Cleared area
AZ R:14:213(ASM)	Rock ring
AZ R:14:214(ASM)	Cleared area
AZ R:14:215(ASM)	Cleared area
AZ R:14:216(ASM)	Rock ring
AZ R:14:217(ASM)	Cleared area
AZ R:14:218(ASM)	Cleared areas
AZ R:15:97(ASM)	Rock ring, rock cluster
AZ R:15:98(ASM)	Cleared area, compressed gravel area
AZ R:15:99(ASM)	Rock rings
AZ R:15:100(ASM)	Cleared areas
AZ R:15:101(ASM)	Cleared area, compressed gravel area
AZ R:15:102(ASM)	Rock clusters
AZ R:15:103(ASM)	Cleared areas
AZ R:15:104(ASM)	Cleared areas
AZ R:15:105(ASM)	Cleared areas
AZ R:15:106(ASM)	Cleared areas, rock rings
AZ R:15:107(ASM)	Rock ring

Yuma Proving Ground List of Identified Historic Properties

Site Number	Primary Site Type
AZ R:15:108(ASM)	Lithic scatter
AZ R:15:109(ASM)	Compressed gravel areas
AZ R:15:110(ASM)	Lithic scatter
AZ R:15:111(ASM)	Rock ring, rock cluster, rock alignment
AZ R:15:112(ASM)	Lithic scatter
AZ R:15:113(ASM)	Lithic scatter
AZ R:15:114(ASM)	Lithic scatter
AZ R:15:115(ASM)	Cleared areas, rock rings, rock clusters
AZ R:15:116(ASM)	Cleared areas, compressed gravel area, rock ring
AZ R:15:117(ASM)	Cleared areas, compressed gravel area
AZ R:15:118(ASM)	Cleared areas
AZ R:15:119(ASM)	Cleared areas, rock rings
AZ R:15:120(ASM)	Cleared areas
AZ R:15:121(ASM)	Rock rings, rock clusters
AZ R:15:122(ASM)	Cleared areas
AZ R:15:123(ASM)	Cleared areas, compressed gravel area
AZ R:15:124(ASM)	Cleared area
AZ R:15:125(ASM)	Cleared areas
AZ R:15:126(ASM)	Rock cluster
AZ R:15:127(ASM)	Cleared areas
AZ R:15:128(ASM)	Rock ring
AZ R:15:129(ASM)	Rock ring
AZ R:15:130(ASM)	Rock ring
AZ R:15:131(ASM)	Cleared area
AZ R:15:132(ASM)	Cleared area
AZ R:15:133(ASM)	Cleared area
AZ R:15:134(ASM)	Rock ring
AZ R:15:135(ASM)	Cleared area
AZ R:15:136(ASM)	Cleared area
AZ R:15:137(ASM)	Rock ring
AZ R:15:138(ASM)	Cleared area
AZ R:15:139(ASM)	Rock cluster
AZ R:15:140(ASM)	Rock ring
AZ R:15:141(ASM)	Cleared area
AZ R:15:142(ASM)	Rock ring
AZ R:15:143(ASM)	Rock cluster
AZ R:15:144(ASM)	Rock cluster
AZ R:15:145(ASM)	Cleared area
AZ R:15:146(ASM)	Cleared area
AZ R:15:147(ASM)	Rock cluster
AZ R:15:148(ASM)	Rock cluster
AZ R:15:149(ASM)	Cleared area
AZ R:15:150(ASM)	Rock ring
AZ R:15:151(ASM)	Cleared area
AZ R:15:152(ASM)	Cleared area
AZ R:15:153(ASM)	Rock ring
AZ R:15:154(ASM)	Rock ring
AZ R:15:155(ASM)	Rock ring
AZ R:15:156(ASM)	Rock ring
AZ R:15:157(ASM)	Rock ring
AZ R:15:158(ASM)	Cleared area
AZ R:15:159(ASM)	Cleared area

Site Number	Primary Site Type
AZ R:15:160(ASM)	Rock cluster
AZ R:15:161(ASM)	Rock ring
AZ R:15:162(ASM)	Rock ring
AZ R:15:163(ASM)	Cleared area
AZ R:15:164(ASM)	Rock ring
AZ R:15:165(ASM)	Rock ring
AZ R:15:166(ASM)	Rock cluster
AZ R:15:167(ASM)	Rock cluster
AZ R:15:168(ASM)	Rock cluster
AZ R:15:169(ASM)	Rock ring
AZ R:15:170(ASM)	Rock cluster
AZ R:15:171(ASM)	Rock ring
AZ R:15:172(ASM)	Rock cluster
AZ R:15:173(ASM)	Rock ring
AZ R:15:174(ASM)	Rock clusters
AZ R:15:175(ASM)	Cleared area
AZ R:15:176(ASM)	Rock clusters
AZ R:15:177(ASM)	Rock rings
AZ R:15:178(ASM)	Rock clusters
AZ R:15:179(ASM)	Rock clusters
AZ R:15:180(ASM)	Rock ring
AZ R:15:181(ASM)	Rock ring
AZ R:15:182(ASM)	Cleared area
AZ R:15:183(ASM)	Rock ring
AZ R:14:21(ASM)	Lithic scatter
Extended Combat Systems Maneuver Area District Eligible Sites — SHPO letter 1/13/2000 (Howard to Gauna)	
AZ X:4:106(ASM)	Lithic scatter
AZ X:4:107(ASM)	Lithic scatter
AZ X:4:108(ASM)	Cleared area
AZ X:4:109(ASM)	Lithic & ceramic scatter
AZ X:4:110(ASM)	Cleared area
AZ X:4:111(ASM)	Lithic scatter
AZ X:4:112(ASM)	Lithic & ceramic scatter
AZ X:4:113(ASM)	Rock ring
AZ X:4:114(ASM)	Cleared area
AZ X:4:115(ASM)	Rock cairn
AZ X:4:116(ASM)	Lithic scatter
AZ X:4:117(ASM)	Cleared area
AZ X:4:118(ASM)	Cleared area
AZ X:4:119(ASM)	Lithic scatter
AZ X:4:121(ASM)	Cobble cluster
AZ X:4:122(ASM)	Rock ring
AZ X:4:123(ASM)	Lithic scatter
AZ X:4:124(ASM)	Cleared area
AZ X:4:125(ASM)	Lithic scatter
AZ X:4:126(ASM)	Cleared area
AZ X:4:127(ASM)	Cleared area
AZ X:4:128(ASM)	Lithic scatter
AZ X:4:129(ASM)	Lithic scatter
AZ X:4:130(ASM)	Lithic scatter
AZ X:4:131(ASM)	Cleared area
AZ X:4:132(ASM)	Lithic scatter
AZ X:4:133(ASM)	Lithic scatter
AZ X:4:134(ASM)	Lithic scatter

Yuma Proving Ground List of Identified Historic Properties

Site Number	Primary Site Type
AZ X:4:135(ASM)	Lithic scatter
AZ X:4:136(ASM)	Cleared area
AZ X:4:137(ASM)	Lithic scatter
AZ X:4:138(ASM)	Lithic scatter
AZ X:4:139(ASM)	Lithic scatter
AZ X:4:140(ASM)	Cleared area
AZ X:4:141(ASM)	Cleared area
AZ X:4:142(ASM)	Cleared area
AZ X:4:143(ASM)	Cleared area
AZ X:4:144(ASM)	Cleared area
AZ X:4:145(ASM)	Rock ring/rock cairn
AZ X:4:146(ASM)	Lithic scatter
AZ X:4:147(ASM)	Cleared area
AZ X:4:149(ASM)	Lithic scatter
AZ X:4:150(ASM)	Lithic scatter
AZ X:4:151(ASM)	Lithic scatter
AZ X:4:152(ASM)	Cleared area
AZ X:4:153(ASM)	Rock ring
AZ X:4:154(ASM)	Cleared area
AZ X:4:155(ASM)	Cleared area
AZ X:4:156(ASM)	Rock ring
AZ X:4:159(ASM)	Lithic scatter
AZ X:4:160(ASM)	Lithic scatter
AZ X:4:161(ASM)	Lithic scatter
AZ X:4:162(ASM)	Cleared area
AZ X:4:163(ASM)	Cleared area
AZ X:4:164(ASM)	Lithic scatter
AZ X:4:165(ASM)	Rock ring
AZ X:4:166(ASM)	Rock ring
AZ X:4:167(ASM)	Rock ring
AZ X:4:168(ASM)	Rock ring
AZ X:4:169(ASM)	Cleared area
AZ X:4:170(ASM)	Cleared area
AZ X:4:171(ASM)	Cleared area
AZ X:4:172(ASM)	Lithic scatter
AZ X:4:173(ASM)	Ceramic scatter
AZ X:4:174(ASM)	Lithic scatter
AZ X:4:175(ASM)	Lithic scatter
AZ X:4:176(ASM)	Rock ring
AZ X:4:177(ASM)	Cleared area
AZ X:4:178(ASM)	Rock ring
AZ X:4:179(ASM)	Rock ring
AZ X:4:180(ASM)	Lithic scatter
AZ X:4:181(ASM)	Rock ring
AZ X:4:182(ASM)	Lithic scatter
AZ X:4:183(ASM)	Cleared area
AZ X:4:184(ASM)	Lithic scatter
AZ X:4:185(ASM)	Lithic scatter
AZ X:4:186(ASM)	Lithic scatter
AZ X:4:187(ASM)	Cleared area
AZ X:4:188(ASM)	Lithic scatter
AZ X:4:189(ASM)	Lithic scatter
AZ X:4:190(ASM)	Lithic scatter
AZ X:4:191(ASM)	Lithic scatter
AZ X:4:192(ASM)	Lithic scatter
AZ X:4:193(ASM)	Rock ring
AZ X:4:194(ASM)	Lithic scatter

Site Number	Primary Site Type
AZ X:4:195(ASM)	Cleared area
AZ X:4:196(ASM)	Rock ring
AZ X:4:197(ASM)	Lithic scatter
AZ X:4:198(ASM)	Lithic scatter
AZ X:4:199(ASM)	Lithic scatter
AZ X:4:200(ASM)	Rock ring
AZ X:4:201(ASM)	Lithic scatter
AZ X:4:202(ASM)	Rock ring
AZ X:4:203(ASM)	Lithic scatter
AZ X:4:204(ASM)	Rock cluster, rock alignment
AZ X:4:205(ASM)	Lithic scatter
AZ X:4:206(ASM)	Rock ring
AZ X:4:207(ASM)	Rock cairn
AZ X:4:208(ASM)	Lithic scatter
AZ X:4:209(ASM)	Lithic scatter
AZ X:4:210(ASM)	Lithic scatter
AZ X:4:211(ASM)	Rock cluster
AZ X:4:212(ASM)	Rock ring
AZ X:4:213(ASM)	Rock ring
AZ X:4:214(ASM)	Cleared area
AZ X:4:215(ASM)	Rock ring
AZ X:4:216(ASM)	Historic mine with numerous features
AZ X:4:217(ASM)	Rock ring
AZ X:4:218(ASM)	Cleared area
AZ X:4:219(ASM)	Rock ring
AZ X:4:220(ASM)	Rock ring
AZ X:4:221(ASM)	Cleared area
AZ X:4:222(ASM)	Lithic scatter
AZ X:4:223(ASM)	Rock cairns
AZ X:4:224(ASM)	Cleared area
AZ X:4:225(ASM)	Cleared area
AZ X:4:226(ASM)	Cleared area
AZ X:4:227(ASM)	Rock ring
AZ X:4:228(ASM)	Cleared area
AZ X:4:229(ASM)	Cleared area
AZ X:4:230(ASM)	Cleared area
AZ X:4:231(ASM)	Trail segment
AZ X:4:232(ASM)	Trail segment
AZ X:4:233(ASM)	Trail segment
AZ X:4:234(ASM)	Trail segment
AZ X:4:235(ASM)	Trail segment
AZ X:4:236(ASM)	Trail segment
AZ X:4:237(ASM)	Trail segment
AZ X:4:238(ASM)	Trail segment
AZ X:4:239(ASM)	Trail segment
AZ X:4:240(ASM)	Trail segment
AZ X:4:241(ASM)	Trail segment
AZ X:4:242(ASM)	Trail segment
AZ X:4:243(ASM)	Trail segment
AZ X:4:244(ASM)	Trail segment
AZ X:4:245(ASM)	Trail segment
AZ X:4:246(ASM)	Trail segment
AZ X:4:247(ASM)	Trail segment
AZ X:4:248(ASM)	Trail segment
AZ X:4:249(ASM)	Trail segment
AZ X:4:250(ASM)	Trail segment

Yuma Proving Ground List of Identified Historic Properties

Site Number	Primary Site Type
AZ X:4:251(ASM)	Trail segment
AZ X:4:252(ASM)	Trail segment
AZ X:4:253(ASM)	Trail segment
AZ X:4:254(ASM)	Trail segment
AZ X:4:255(ASM)	Trail segment
AZ X:4:256(ASM)	Trail segment
AZ X:4:257(ASM)	Trail segment
AZ X:4:258(ASM)	Trail segment
AZ X:4:259(ASM)	Trail segment
AZ X:4:260(ASM)	Trail segment
AZ X:4:261(ASM)	Trail segment
AZ X:4:262(ASM)	Trail segment
AZ X:4:263(ASM)	Trail segment
AZ X:4:264(ASM)	Trail segment
AZ X:4:265(ASM)	Trail segment
AZ X:4:266(ASM)	Rock cluster
AZ X:4:267(ASM)	Lithic scatter
AZ X:4:268(ASM)	Lithic scatter
AZ X:4:269(ASM)	Lithic scatter
Mohave Tanks and Mohave Wash District Eligible Sites SHPO-2000-3029(3921, 5295, 10290)	
AZ R:11:62(ASM)	Trail segment
AZ R:11:81(ASM)	Cleared area, rock ring, rock cairn
AZ R:11:82(ASM)	Trail segment
AZ R:11:83(ASM)	Rock ring
AZ R:11:87(ASM)	Rockshelter
AZ R:11:88(ASM)	Cleared area
AZ R:11:89(ASM)	Trail segment
AZ R:11:91(ASM)	Rock ring
AZ R:11:92(ASM)	Rockshelter
AZ R:11:93(ASM)	Rockshelter
AZ R:11:94(ASM)	Lithic scatter
AZ R:11:95(ASM)	Rockshelter
AZ R:11:108(ASM)	Rock cluster
Red Bluff Range Combat Systems Maneuver Area District Eligible Sites SHPO-2002-743(16273)	
AZ X:4:275(ASM)	Lithic scatter
AZ X:4:276(ASM)	Rock ring
AZ X:4:277(ASM)	Lithic scatter
AZ X:4:278(ASM)	Lithic scatter
AZ X:4:279(ASM)	Lithic scatter
AZ X:4:280(ASM)	Lithic scatter
AZ X:4:281(ASM)	Lithic scatter
AZ X:4:282(ASM)	Rock ring
AZ X:4:283(ASM)	Lithic scatter
AZ X:4:284(ASM)	Rock ring
AZ X:4:285(ASM)	Lithic scatter
AZ X:4:286(ASM)	Rock ring
AZ X:4:287(ASM)	Lithic scatter
AZ X:4:288(ASM)	Lithic scatter
AZ X:4:289(ASM)	Lithic scatter
AZ X:4:290(ASM)	Lithic scatter

Site Number	Primary Site Type
AZ X:4:291(ASM)	Lithic scatter
AZ X:4:292(ASM)	Rock ring
AZ X:4:293(ASM)	Lithic scatter
AZ X:4:294(ASM)	Lithic scatter
AZ X:4:295(ASM)	Lithic scatter
AZ X:4:297(ASM)	Lithic scatter
AZ X:4:298(ASM)	Rock alignment/rock cluster
AZ X:4:299(ASM)	Rock ring
AZ X:4:300(ASM)	Lithic scatter
AZ X:4:301(ASM)	Lithic scatter
AZ X:4:302(ASM)	Lithic scatter
AZ X:4:303(ASM)	Lithic scatter
AZ X:4:305(ASM)	Lithic scatter
AZ X:4:306(ASM)	Lithic scatter
AZ X:4:307(ASM)	Lithic scatter
AZ X:4:308(ASM)	Lithic scatter
AZ X:4:309(ASM)	Lithic scatter
AZ X:4:310(ASM)	Lithic scatter
AZ X:4:311(ASM)	Lithic scatter
AZ X:4:312(ASM)	Lithic scatter
AZ X:4:313(ASM)	Rock ring
AZ X:4:314(ASM)	Lithic scatter
AZ X:4:315(ASM)	Lithic scatter
AZ X:4:316(ASM)	Lithic scatter
AZ X:4:317(ASM)	Lithic scatter
AZ X:4:318(ASM)	Trail segment
AZ X:4:320(ASM)	Lithic scatter
AZ X:4:321(ASM)	Lithic scatter
AZ X:4:322(ASM)	Lithic scatter
AZ X:4:323(ASM)	Lithic scatter
AZ X:4:324(ASM)	Lithic scatter
AZ X:4:325(ASM)	Lithic scatter
AZ X:4:326(ASM)	Lithic scatter
AZ X:4:327(ASM)	Lithic scatter
AZ X:4:328(ASM)	Lithic scatter
AZ X:4:329(ASM)	Lithic scatter
AZ X:4:330(ASM)	Lithic scatter
AZ X:4:331(ASM)	Lithic scatter
AZ X:4:332(ASM)	Lithic scatter
AZ X:4:333(ASM)	Lithic scatter
AZ X:4:334(ASM)	Lithic scatter
AZ X:4:335(ASM)	Lithic scatter
AZ X:4:336(ASM)	Lithic scatter
AZ X:4:337(ASM)	Lithic scatter
AZ X:4:338(ASM)	Lithic scatter
AZ X:4:339(ASM)	Lithic scatter
AZ X:4:340(ASM)	Lithic scatter
AZ X:4:341(ASM)	Rock ring
AZ X:4:343(ASM)	Lithic scatter
AZ X:4:344(ASM)	Rock ring
AZ X:4:345(ASM)	Lithic scatter
AZ X:4:346(ASM)	Lithic scatter
AZ X:4:347(ASM)	Rock ring
AZ X:4:348(ASM)	Lithic scatter
AZ X:4:349(ASM)	Rock ring
AZ X:4:350(ASM)	Lithic scatter
AZ X:4:351(ASM)	Lithic scatter

Yuma Proving Ground List of Identified Historic Properties

Site Number	Primary Site Type
AZ X:4:352(ASM)	Rock ring
AZ X:4:353(ASM)	Rock ring
AZ X:4:354(ASM)	Rock ring
AZ X:4:355(ASM)	Rock ring
AZ X:4:356(ASM)	Rock ring
AZ X:4:357(ASM)	Rock ring
AZ X:4:358(ASM)	Rock ring
AZ X:4:359(ASM)	Rock ring
AZ X:4:360(ASM)	Trail segment
AZ X:4:361(ASM)	Trail segment
AZ X:4:362(ASM)	Trail segment
AZ X:4:363(ASM)	Lithic scatter
AZ X:4:365(ASM)	Cleared area
AZ X:4:366(ASM)	Lithic scatter
AZ X:4:367(ASM)	Lithic scatter

Site Number	Primary Site Type
AZ X:4:368(ASM)	Lithic scatter
AZ X:4:369(ASM)	Lithic scatter
AZ X:4:370(ASM)	Lithic scatter
AZ X:4:371(ASM)	Lithic scatter
AZ X:4:372(ASM)	Trail segment
AZ X:4:304(ASM)	Lithic scatter
Camp Laguna District Eligible Site SHPO-2010-1455(87640)CNAE	
AZ X:3:368(ASM)	Major World War II military training camp

Individually Eligible Sites		
Site Number	Primary Site Type	SHPO Concurrence
AZ 050-0897	Rock rings, cleared areas	SHPO email 3/19/09 (Griffith to McDonald); also SHPO-2010-0218(76634)CNAE
AZ R:11:2(ASM)	Quarry	SHPO letter 4/18/88 (Gasser to Vander Zyl)
AZ R:11:3(ASM)	Lithic scatter	SHPO letter 4/18/88 (Gasser to Vander Zyl)
AZ R:11:4(ASM)	Lithic scatter	SHPO letter 4/18/88 (Gasser to Vander Zyl)
AZ R:11:5(ASM)	Lithic scatter	SHPO letter 4/18/88 (Gasser to Vander Zyl)
AZ R:11:6(ASM)	Lithic scatter	SHPO letter 4/18/88 (Gasser to Vander Zyl)
AZ R:11:7(ASM)	Lithic scatter	SHPO letter 4/18/88 (Gasser to Vander Zyl)
AZ R:11:8(ASM)	Lithic scatter	SHPO letter 4/18/88 (Gasser to Vander Zyl)
AZ R:11:16(ASM)	Quarry, lithic scatter	SHPO letter 5/18/89 (Gasser to Vander Zyl)
AZ R:11:33(ASM)	Lithic scatter	SHPO letter 11/8/93 (Gasser to Vander Zyl)
AZ R:11:36(ASM)	Lithic scatter	SHPO letter 5/23/96 (Heathington to Mitchell)
AZ R:11:37(ASM)	Rock ring	SHPO-2003-0767(16489)NHPA conditional
AZ R:11:38(ASM)	Rock ring	SHPO letter 5/23/96 (Heathington to Mitchell)
AZ R:11:39(ASM)	Rock ring	SHPO letter 5/23/96 (Heathington to Mitchell)
AZ R:11:40(ASM)	Lithic scatter	SHPO letter 5/23/96 (Heathington to Mitchell)
AZ R:11:41(ASM)	Rock alignment	SHPO letter 5/23/96 (Heathington to Mitchell)
AZ R:11:42(ASM)	Lithic scatter	SHPO letter 5/23/96 (Heathington to Mitchell)
AZ R:11:43(ASM)	Lithic scatter	SHPO letter 5/23/96 (Heathington to Mitchell)
AZ R:11:45(ASM)	Lithic scatter	SHPO letter 5/23/96 (Heathington to Mitchell)
AZ R:11:46(ASM)	Lithic scatter	SHPO letter 5/23/96 (Heathington to Mitchell)
AZ R:11:47(ASM)	Lithic scatter	SHPO letter 5/23/96 (Heathington to Mitchell)
AZ R:11:48(ASM)	Lithic scatter	SHPO letter 5/23/96 (Heathington to Mitchell)
AZ R:11:49(ASM)	Ceramic scatter	SHPO letter 5/23/96 (Heathington to Mitchell)
AZ R:11:50(ASM)	Lithic scatter	SHPO letter 5/23/96 (Heathington to Mitchell)
AZ R:11:51(ASM)	Lithic scatter	SHPO letter 5/23/96 (Heathington to Mitchell)
AZ R:11:52(ASM)	Lithic scatter	SHPO letter 5/23/96 (Heathington to Mitchell)
AZ R:11:53(ASM)	Lithic & ceramic scatter	SHPO letter 5/23/96 (Heathington to Mitchell)
AZ R:11:54(ASM)	Lithic scatter	SHPO letter 5/23/96 (Heathington to Mitchell)
AZ R:11:55(ASM)	Lithic & ceramic scatter	SHPO letter 5/23/96 (Heathington to Mitchell)
AZ R:11:56(ASM)	Lithic & ceramic scatter	SHPO letter 5/23/96 (Heathington to Mitchell)
AZ R:11:57(ASM)	Lithic scatter	SHPO letter 5/23/96 (Heathington to Mitchell)
AZ R:11:58(ASM)	Lithic scatter	SHPO letter 5/23/96 (Heathington to Mitchell)
AZ R:11:59(ASM)	Rock ring	SHPO letter 5/23/96 (Heathington to Mitchell)
AZ R:11:60(ASM)	Rock ring	SHPO letter 5/23/96 (Heathington to Mitchell)
AZ R:11:61(ASM)	Rock ring	SHPO letter 5/23/96 (Heathington to Mitchell)

Yuma Proving Ground List of Identified Historic Properties

Individually Eligible Sites		
Site Number	Primary Site Type	SHPO Concurrence
AZ R:11:71(ASM)	Rock art	SHPO letter 5/23/96 (Heathington to Mitchell)
AZ R:11:118(ASM)	Rock rings	SHPO email 3/19/09 (Griffith to McDonald); also SHPO-2010-0218(76634)CNAE
AZ R:11:123(ASM)	Trail segment	SHPO-2004-1207(21852)
AZ R:11:124(ASM)	Rock alignment	SHPO-2004-1207(21852)
AZ R:11:125(ASM)	Rock ring	SHPO-2004-1207(21852)
AZ R:11:134(ASM)	Trail segment	SHPO email 3/19/09 (Griffith to McDonald); also SHPO-2010-0218(76634)CNAE
AZ R:11:137(ASM)	Trail segment	SHPO email 3/19/09 (Griffith to McDonald); also SHPO-2010-0218(76634)CNAE
AZ R:11:138(ASM)	Lithic scatter	SHPO email 3/19/09 (Griffith to McDonald); also SHPO-2010-0218(76634)CNAE
AZ R:11:178(ASM)	Ceramic scatter	SHPO-2012-0367(101162)DOE
AZ R:11:184(ASM)	Trail segment	SHPO-2012-0367(101162)DOE
AZ R:11:193(ASM)	Trail segment	SHPO-2012-0367(101162)DOE
AZ R:14:219(ASM)	Lithic scatter	SHPO letter 11/8/93 (Gasser to Vander Zyl)
AZ R:14:220(ASM)	Lithic scatter	SHPO letter 11/8/93 (Gasser to Vander Zyl)
AZ R:14:221(ASM)	Cleared area	SHPO letter 11/8/93 (Gasser to Vander Zyl)
AZ R:14:222(ASM)	Cleared area	SHPO letter 11/8/93 (Gasser to Vander Zyl)
AZ R:14:223(ASM)	Cleared area	SHPO letter 11/8/93 (Gasser to Vander Zyl)
AZ R:14:224(ASM)	Cleared area	SHPO letter 11/8/93 (Gasser to Vander Zyl)
AZ R:14:225(ASM)	Rock ring	SHPO letter 11/8/93 (Gasser to Vander Zyl)
AZ R:14:226(ASM)	Cleared area, compressed gravel area	SHPO letter 11/8/93 (Gasser to Vander Zyl)
AZ R:14:227(ASM)	Rock alignment	SHPO letter 11/8/93 (Gasser to Vander Zyl)
AZ R:14:228(ASM)	Rock cluster	SHPO letter 11/8/93 (Gasser to Vander Zyl)
AZ R:14:229(ASM)	Rock cluster	SHPO letter 11/8/93 (Gasser to Vander Zyl)
AZ R:14:230(ASM)	Cleared area	SHPO letter 11/8/93 (Gasser to Vander Zyl)
AZ R:14:231(ASM)	Cleared area	SHPO letter 11/8/93 (Gasser to Vander Zyl)
AZ R:14:232(ASM)	Rock ring	SHPO letter 11/8/93 (Gasser to Vander Zyl)
AZ R:14:233(ASM)	Rock alignment	SHPO letter 11/8/93 (Gasser to Vander Zyl)
AZ R:14:234(ASM)	Cleared area	SHPO letter 11/8/93 (Gasser to Vander Zyl)
AZ R:14:235(ASM)	Cleared area	SHPO letter 11/8/93 (Gasser to Vander Zyl)
AZ R:14:236(ASM)	Rock ring	SHPO letter 11/8/93 (Gasser to Vander Zyl)
AZ R:14:237(ASM)	Cleared area, compressed gravel area	SHPO letter 11/8/93 (Gasser to Vander Zyl)
AZ R:14:238(ASM)	Rock cluster	SHPO letter 11/8/93 (Gasser to Vander Zyl)
AZ R:14:239(ASM)	Cleared area	SHPO letter 11/8/93 (Gasser to Vander Zyl)
AZ R:14:240(ASM)	Rock cluster	SHPO letter 11/8/93 (Gasser to Vander Zyl)
AZ R:14:241(ASM)	Cleared area	SHPO letter 11/8/93 (Gasser to Vander Zyl)
AZ R:14:242(ASM)	Cleared area	SHPO letter 11/8/93 (Gasser to Vander Zyl)
AZ R:14:243(ASM)	Cleared area	SHPO letter 11/8/93 (Gasser to Vander Zyl)
AZ R:14:244(ASM)	Rock ring	SHPO letter 11/8/93 (Gasser to Vander Zyl)
AZ R:14:245(ASM)	Rock ring	SHPO letter 11/8/93 (Gasser to Vander Zyl)
AZ R:14:246(ASM)	Cleared area	SHPO letter 11/8/93 (Gasser to Vander Zyl)
AZ R:14:247(ASM)	Rock ring	SHPO letter 11/8/93 (Gasser to Vander Zyl)
AZ R:14:248(ASM)	Rock cluster	SHPO letter 11/8/93 (Gasser to Vander Zyl)
AZ R:14:249(ASM)	Rock ring	SHPO letter 11/8/93 (Gasser to Vander Zyl)
AZ R:14:250(ASM)	Rock cluster	SHPO letter 11/8/93 (Gasser to Vander Zyl)
AZ R:14:257(ASM)	Trail segment	SHPO-2003-1484(20340)
AZ R:15:1(ASM)	Cleared areas	SHPO letter 7/2/84 (Fryman to Enson, U.S. Army Corps of Engineers, LA District)
AZ R:15:2(ASM)	Trail segment	SHPO letter 7/2/84 (Fryman to Enson, U.S. Army Corps of Engineers, LA District)

Yuma Proving Ground List of Identified Historic Properties

Individually Eligible Sites		
Site Number	Primary Site Type	SHPO Concurrence
AZ R:15:3(ASM)	Trail segment	SHPO letter 7/2/84 (Fryman to Enson, U.S. Army Corps of Engineers, LA District)
AZ R:15:4(ASM)	Trail segment	SHPO letter 7/2/84 (Fryman to Enson, U.S. Army Corps of Engineers, LA District)
AZ R:15:5(ASM)	Trail segment	SHPO letter 7/2/84 (Fryman to Enson, U.S. Army Corps of Engineers, LA District)
AZ R:15:6(ASM)	Trail segment	SHPO letter 7/2/84 (Fryman to Enson, U.S. Army Corps of Engineers, LA District)
AZ R:15:7(ASM)	Trail segment	SHPO letter 7/2/84 (Fryman to Enson, U.S. Army Corps of Engineers, LA District)
AZ R:15:184(ASM)	Cleared area	SHPO letter 11/8/93 (Gasser to Vander Zyl)
AZ R:15:185(ASM)	Rock ring	SHPO letter 11/8/93 (Gasser to Vander Zyl)
AZ R:15:186(ASM)	Cleared area	SHPO letter 11/8/93 (Gasser to Vander Zyl)
AZ R:15:187(ASM)	Cleared area	SHPO letter 11/8/93 (Gasser to Vander Zyl)
AZ R:15:188(ASM)	Cleared area	SHPO letter 11/8/93 (Gasser to Vander Zyl)
AZ R:15:189(ASM)	Rock ring	SHPO letter 11/8/93 (Gasser to Vander Zyl)
AZ R:15:190(ASM)	Cleared area	SHPO letter 11/8/93 (Gasser to Vander Zyl)
AZ R:15:191(ASM)	Rock cluster	SHPO letter 11/8/93 (Gasser to Vander Zyl)
AZ R:15:192(ASM)	Rock ring	SHPO letter 11/8/93 (Gasser to Vander Zyl)
AZ R:15:193(ASM)	Cleared area	SHPO letter 11/8/93 (Gasser to Vander Zyl)
AZ R:15:194(ASM)	Cleared area	SHPO letter 11/8/93 (Gasser to Vander Zyl)
AZ R:15:195(ASM)	Cleared area	SHPO letter 11/8/93 (Gasser to Vander Zyl)
AZ R:15:196(ASM)	Rock cluster	SHPO letter 11/8/93 (Gasser to Vander Zyl)
AZ R:15:197(ASM)	Rock cluster	SHPO letter 11/8/93 (Gasser to Vander Zyl)
AZ R:15:198(ASM)	Rock cluster	SHPO letter 11/8/93 (Gasser to Vander Zyl)
AZ R:15:199(ASM)	Cleared area	SHPO letter 11/8/93 (Gasser to Vander Zyl)
AZ R:15:200(ASM)	Rock ring	SHPO letter 11/8/93 (Gasser to Vander Zyl)
AZ R:15:201(ASM)	Rock ring	SHPO letter 11/8/93 (Gasser to Vander Zyl)
AZ R:15:202(ASM)	Rock ring	SHPO letter 11/8/93 (Gasser to Vander Zyl)
AZ R:15:203(ASM)	Rock cluster	SHPO letter 11/8/93 (Gasser to Vander Zyl)
AZ R:15:204(ASM)	Rock ring	SHPO letter 11/8/93 (Gasser to Vander Zyl)
AZ R:15:205(ASM)	Rock ring	SHPO letter 11/8/93 (Gasser to Vander Zyl)
AZ R:15:206(ASM)	Rock ring	SHPO letter 11/8/93 (Gasser to Vander Zyl)
AZ R:15:207(ASM)	Rock ring	SHPO letter 11/8/93 (Gasser to Vander Zyl)
AZ R:15:208(ASM)	Cleared area	SHPO letter 11/8/93 (Gasser to Vander Zyl)
AZ R:15:209(ASM)	Cleared area	SHPO letter 11/8/93 (Gasser to Vander Zyl)
AZ R:15:210(ASM)	Rock cluster	SHPO letter 11/8/93 (Gasser to Vander Zyl)
AZ R:15:211(ASM)	Cleared area	SHPO letter 11/8/93 (Gasser to Vander Zyl)
AZ R:15:212(ASM)	Cleared areas	SHPO letter 11/8/93 (Gasser to Vander Zyl)
AZ R:15:213(ASM)	Rock cluster	SHPO letter 11/8/93 (Gasser to Vander Zyl)
AZ R:15:214(ASM)	Rock cluster	SHPO letter 11/8/93 (Gasser to Vander Zyl)
AZ R:15:215(ASM)	Rock ring	SHPO letter 11/8/93 (Gasser to Vander Zyl)
AZ R:15:216(ASM)	Cleared area	SHPO letter 11/8/93 (Gasser to Vander Zyl)
AZ R:15:217(ASM)	Cleared area, rock ring	SHPO letter 9/9/94 (Gasser to Vander Zyl)
AZ R:15:220(ASM)	Lithic scatter	Unknown
AZ R:15:221(ASM)	Rock ring	Unknown
AZ R:15:222(ASM)	Rock alignment	Unknown
AZ R:15:223(ASM)	Rock alignment	Unknown
AZ R:15:224(ASM)	Lithic scatter	Unknown
AZ R:15:225(ASM)	Trail segment	Unknown
AZ R:15:252(ASM)	Cleared area	SHPO-2003-1484(20340)
AZ R:15:258(ASM)	Rock ring	SHPO-2004-1171(21054)
AZ R:15:262(ASM)	Cleared areas, rock clusters	SHPO-2008-1491(37683)DOE

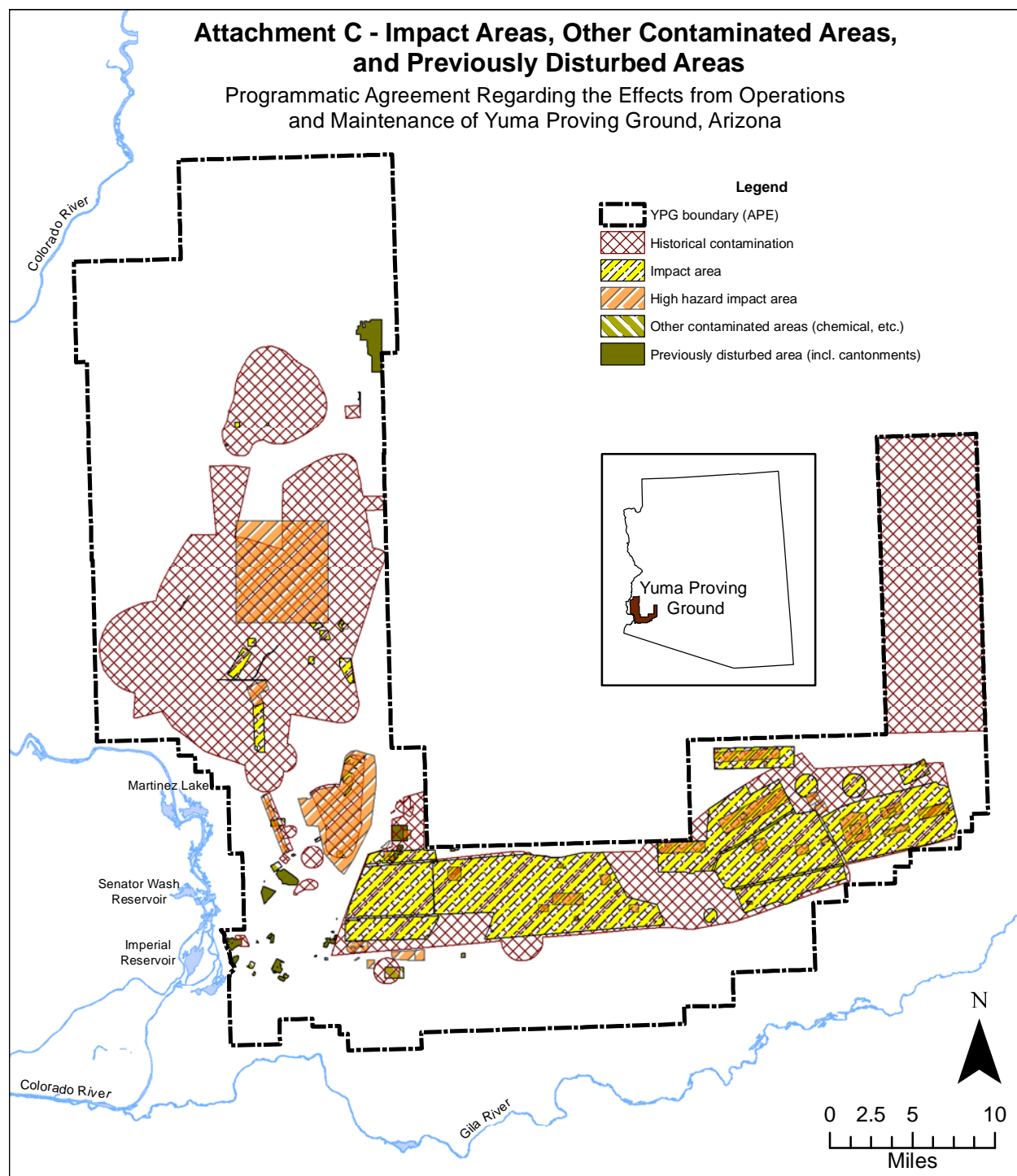
Yuma Proving Ground List of Identified Historic Properties

Individually Eligible Sites		
Site Number	Primary Site Type	SHPO Concurrence
AZ R:15:263(ASM)	Rock cluster	SHPO-2008-1491(37683)DOE
AZ R:15:264(ASM)	Rock ring	SHPO-2008-1491(37683)DOE
AZ R:15:265(ASM)	Rock ring	SHPO-2008-1491(37683)DOE
AZ R:15:266(ASM)	Cleared area	SHPO-2008-1491(37683)DOE
AZ R:15:272(ASM)	Road	SHPO-2012-1059(108839)DOE
AZ R:15:281(ASM)	Road	SHPO-2012-1059(108839)DOE
AZ R:15:285(ASM)	Rock rings, lithics	SHPO-2011-0339(90091)CNAE
AZ S:14:62(ASM)	Lithic scatter	SHPO-2000-0704(579)
AZ S:14:63(ASM)	Petroglyph	SHPO-2000-0704(579)
AZ S:14:66(ASM)	Rock cairn, trail segment, & lithic scatter	SHPO-2000-0704(579)
AZ S:14:67(ASM)	Lithic scatter	SHPO-2000-0704(579)
AZ S:14:70(ASM)	Lithic scatter	SHPO-2000-0704(579)
AZ S:14:71(ASM)	Lithic scatter	SHPO-2000-0704(579)
AZ S:14:72(ASM)	Petroglyph	SHPO-2000-0704(579)
AZ S:14:73(ASM)	Trail segment	SHPO-2000-0704(579)
AZ X:3:53(ASM)	Cleared area	SHPO letter 9/21/92 (Gasser to Vander Zyl)
AZ X:3:54(ASM)	Cleared area	SHPO letter 9/21/92 (Gasser to Vander Zyl)
AZ X:3:55(ASM)	Cleared area	SHPO letter 9/21/92 (Gasser to Vander Zyl)
AZ X:3:110(ASM)	Cleared area	SHPO letter 9/21/92 (Gasser to Vander Zyl)
AZ X:3:346(ASM)	Cleared area	SHPO-2009-1047(40482)NHPA
AZ X:3:371(ASM)	Road, State Route 95	SHPO-2000-1125(1088)
AZ X:3:384(ASM)	Lithic scatter	SHPO-2000-1125(1088)
AZ X:3:385(ASM)	Lithic scatter	SHPO-2000-1125(1088)
AZ X:3:401(ASM)	Lithic & ceramic scatter	SHPO-2001-1772(32845)CNAE
AZ X:3:402(ASM)	Lithic scatter	SHPO-2001-1772(32845)CNAE
AZ X:3:403(ASM)	Lithic scatter	SHPO-2001-1772(32845)CNAE
AZ X:3:404(ASM)	Lithic scatter	SHPO-2001-1772(32845)CNAE
AZ X:3:405(ASM)	Lithic scatter	SHPO-2001-1772(32845)CNAE
AZ X:3:406(ASM)	Lithic scatter	SHPO-2001-1772(32845)CNAE
AZ X:3:407(ASM)	Lithic scatter	SHPO-2001-1772(32845)CNAE
AZ X:3:471(ASM)	Lithic scatter	SHPO-2001-1772(32845)CNAE
AZ X:3:473(ASM)	Lithic scatter	SHPO-2001-1772(32845)CNAE
AZ X:3:489(ASM)	Cleared area	SHPO-2009-1047(40482)NHPA
AZ X:3:496(ASM)	Lithic scatter	SHPO-2009-1047(40482)NHPA
AZ X:3:529(ASM)	Quarry	SHPO-2010-1498(87828)DOE
AZ X:4:69(ASM)	Rock ring	SHPO letter 3/12/97 (Heathington to Vander Zyl)
AZ X:4:70(ASM)	Lithic scatter	SHPO letter 3/12/97 (Heathington to Vander Zyl)
AZ X:4:71(ASM)	Rock ring	SHPO letter 3/12/97 (Heathington to Vander Zyl)
AZ X:4:72(ASM)	Rock ring	SHPO letter 3/12/97 (Heathington to Vander Zyl)
AZ X:4:73(ASM)	Rock ring	SHPO letter 3/12/97 (Heathington to Vander Zyl)
AZ X:4:74(ASM)	Rock ring	SHPO letter 3/12/97 (Heathington to Vander Zyl)
AZ X:4:75(ASM)	Rock ring	SHPO letter 3/12/97 (Heathington to Vander Zyl)
AZ X:4:393(ASM)	Road	SHPO-2012-1059(108839)DOE
AZ Y:1:5(ASM)	Lithic scatter	Concurrence based on Effland, R. W. and Margerie Green, 1983, "Cultural Resource Investigations for the Yuma 500 kV Transmission Line, Arizona Public Service Company," and Schilz, Allan J., Richard I. Carrico, and Jay Thesken, "Archaeological Investigations in Southwestern Arizona: The APS Yuma 500kV Transmission Line."
AZ Y:1:155(ASM)	Ground stone quarry	SHPO-2012-1122(109098)DOE
AZ Y:1:157(ASM)	Ground stone	SHPO-2012-1122(109098)DOE
AZ Y:1:159(ASM)	Ground stone	SHPO-2012-1122(109098)DOE

Yuma Proving Ground List of Identified Historic Properties

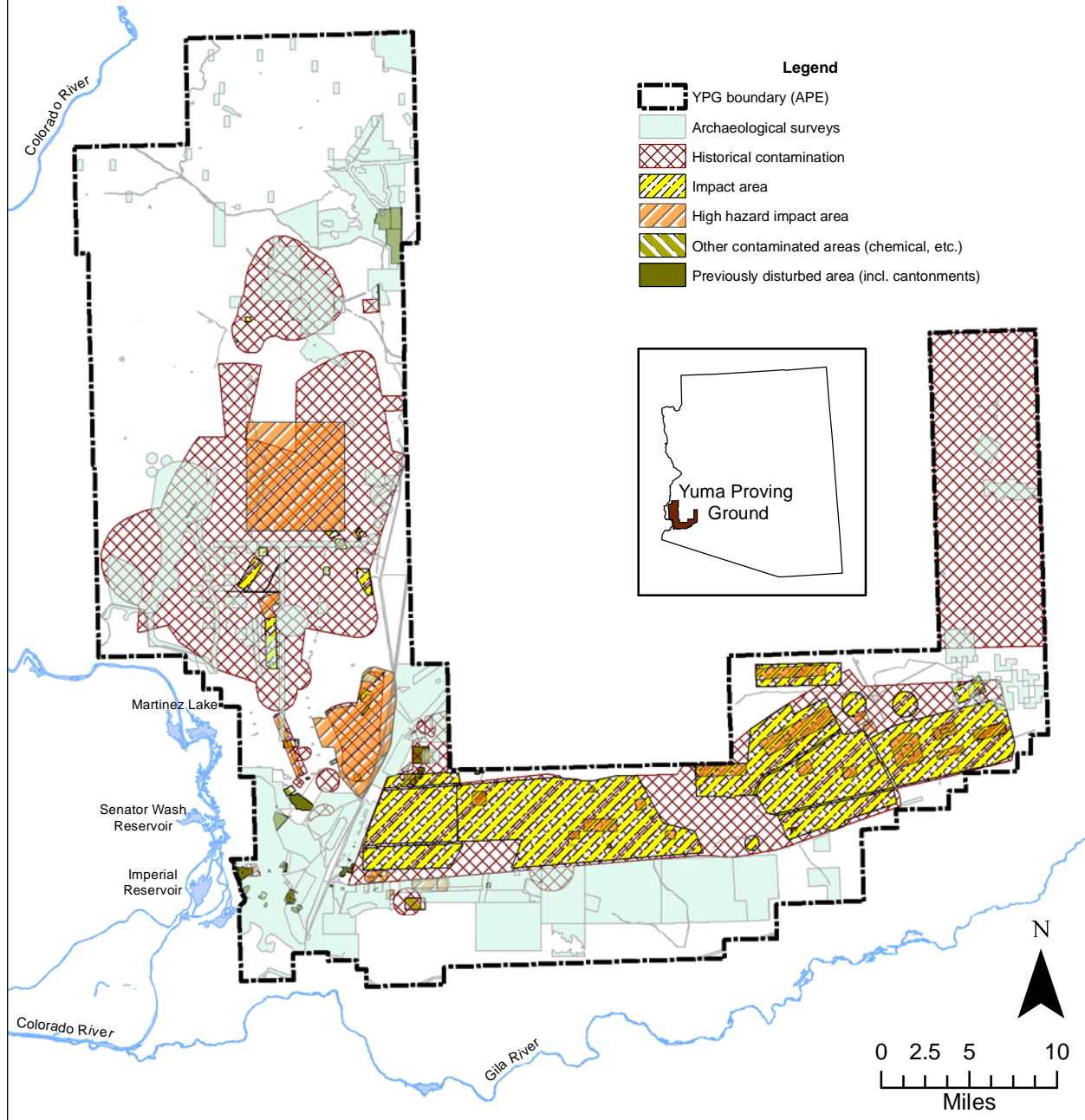
Individually Eligible Sites		
Site Number	Primary Site Type	SHPO Concurrence
AZ Y:2:37(ASM)	Lithic scatter	SHPO-2000-0704(579)
AZ Y:2:39(ASM)	Rock ring	SHPO-2000-0704(579)
AZ Y:2:40(ASM)	Lithic scatter	SHPO-2000-0704(579)
AZ Y:2:42(ASM)	Military WWII training area with numerous features	SHPO-2000-0704(579)
AZ Y:2:43(ASM)	Military training area	SHPO-2000-0704(579)
AZ Y:2:45(ASM)	Cleared area, rock ring	SHPO-2000-0704(579)
AZ-050-1162	Rockshelter/alcove	SHPO-2006-2194(30908)
AZ R:11:273(ASM)	Ceramic scatter	SHP0-2015-0975 (127127)
AZ R:11:274(ASM)	Artifact scatter	SHP0-2015-0975 (127127)
AZ R:11:275(ASM)	Lithic scatter	SHP0-2015-0975 (127127)

Individually Eligible Isolated Occurrences		
Site Number	Primary Site Type	SHPO Concurrence
IO R-264-76	Pinto Projectile Point	SHP0-2015-0975 (127127)



Attachment D - Impact Areas, Other Contaminated Areas, and Previously Disturbed Areas Overlain with Areas Previously Surveyed for Cultural Resources

Programmatic Agreement Regarding the Effects from Operations and Maintenance of Yuma Proving Ground, Arizona



List of Acronyms and Definitions

Acronyms:

ACHP – Advisory Council on Historic Preservation
 APE – Area of Potential Effects
 BLM – Bureau of Land Management
 CFR – Code of Federal Regulations
 CRM – Cultural Resources Manager
 GIS - Geographic Information System
 ICRMP - Integrated Cultural Resources Management Plan
 MOA – Memorandum of Agreement
 NAGPRA - Native American Graves Protection and Repatriation Act
 NHPA - National Historic Preservation Act
 NPS – National Park Service
 NRHP - National Register of Historic Places
 PA – Programmatic Agreement
 SHPO – State Historic Preservation Officer
 SOP – Standard Operating Procedure
 USAG YPG – United States Army Garrison Yuma Proving Ground
 USC – United States Code
 USFWS – U.S. Fish and Wildlife Service
 YPG – Yuma Proving Ground

Definitions:

1. **Area of potential effects** - the geographic area or areas within which an undertaking may directly or indirectly cause alterations in the character or use of historic properties, if any such properties exist. The area of potential effects is influenced by the scale and nature of an undertaking and may be different for different kinds of effects caused by the undertaking.
2. **Contaminated area** -Any area where there are known or suspected hazardous substances, pollutants, hazardous wastes, radioactive materials, and similar contaminants, including Department of Defense-unique materials such as munitions or unexploded munitions (dud ammunition or explosives) regardless of type. These include non-ordnance contaminated areas and ordnance contaminated historic World War II training areas.
 - a. **Non-ordnance contaminated areas** – all areas contaminated with constituents other than munitions, such as state and federally regulated contaminated sites.
 - b. **Ordnance contaminated historic World War II training areas** – World War II training areas, such as mortar impact ranges, etc., that are ordnance contaminated.
3. **Consultation** - the process of seeking, discussing, and considering the views of other participants, and, where feasible, seeking agreement with them regarding matters arising in the Section 106 process.
4. **Consulting parties** – parties with consultative roles in the Section 106 process, as provided for in 36 CFR §800.2(c). Consulting parties specifically include the State Historic Preservation Officer, federally recognized Indian tribes and Native Hawaiian organizations, representatives of local governments, applicants for Federal assistance or for a Federal permit, license, or other approval, and certain individuals and organizations with a demonstrated interest in the undertaking. There are three types of consulting parties with different roles regarding their participation in the agreement document to resolve adverse effects to historic properties – signatory, invited signatory, and concurring party.
 - a. **Signatory** – consulting party with the sole authority to execute, amend, and terminate the agreement, generally the Federal agency, SHPO, and ACHP.
 - b. **Invited Signatory** - consulting party with the authority to amend and terminate the agreement, such as an applicant for a Federal permit.

List of Acronyms and Definitions

- c. **Concurring party** - consulting party asked to concur in the agreement, indicating acceptance of the process leading to the agreement and a desire and willingness to participate in future consultations, such as representative of local government; however, cannot prevent the agreement from being executed, amended, or terminated.
- 5. **Effect** - alteration to the characteristics of a historic property qualifying it for inclusion in or eligibility for the National Register.
- 6. **Historic Property** - Any prehistoric or historic district, site, building, structure, or object included in, or eligible for inclusion in, the National Register of Historic Places maintained by the Secretary of the Interior. This term includes artifacts, records, and remains that are related to and located within such properties. The term includes properties of traditional religious and cultural importance to an Indian tribe or Native Hawaiian organization and that meet the National Register criteria.
- 7. **Impact area** - The ground and associated airspace within the training complex used to contain fired, or launched ammunition and explosives, and the resulting fragments, debris, and components from various weapon systems. A weapon system impact area is the area within the surface danger zone used to contain fired, or launched ammunition and explosives, and the resulting fragments, debris, and components. Indirect fire weapon system impact areas include probable error for range and deflection. Direct fire weapon system impact areas encompass the total surface danger zone from the firing point or position downrange to distance X (the maximum distance a projectile will travel when fired or launched at a given quadrant elevation with a given charge or propulsion system).
 - a. **Temporary impact area.** An impact area within the training complex used for a limited period of time to contain fired or launched ammunition and explosives and the resulting fragments, debris, and components. Temporary impact areas are normally used for non-dud producing ammunition or explosives, and should be able to be cleared and returned to other training support following termination of firing.
 - b. **Dedicated impact area.** An impact area that is permanently designated within the training complex and used indefinitely to contain fired or launched ammunition and explosives and the resulting fragments, debris, and components. Dedicated impact areas are normally used for non-sensitive ammunition and explosives.
 - c. **High-hazard impact area.** An impact area that is permanently designated within the training complex and used to contain sensitive high explosive ammunition and explosives and the resulting fragments, debris, and components. High hazard impact areas are normally established as part of dedicated impact areas where access is limited and strictly controlled due to the extreme hazard of dud ordnance (that is, highly sensitive ammunition and explosives).
- 8. **Program Comment** – the findings and recommendations of the ACHP concerning a specific category of undertakings formally provided in writing to the head of a Federal agency under Section 106. Under 36 CFR §800.14(e), agencies can request the ACHP to provide a Program Comment on a particular category of undertakings in lieu of conducting individual reviews of each individual undertaking under such category. An agency can meet its Section 106 responsibilities for considering the effects of those undertakings on historic properties by following the steps set forth in the Program Comment.
- 9. **Programmatic Agreement** - document that records the terms and conditions agreed upon to resolve the potential adverse effects of a Federal agency program, complex undertaking, or other situations in accordance with 36 CFR §800.14(b).
- 10. **Undertaking** - a project, activity, or program funded in whole or in part under the direct or indirect jurisdiction of a Federal agency, including those carried out by or on behalf of a Federal agency; those carried out with Federal financial assistance; and those requiring a Federal permit, license or approval.
- 11. **Unexploded ordnance** - ammunition and explosives which have been primed fused, armed, or otherwise prepared for action and which have been fired, dropped, launched, projected, or placed in such a manner as to constitute a hazard to operations, installations/communities, personnel, or materiel, and remains unexploded either by malfunction or design or any other cause.

Standard Operating Procedure #5 of the USAG YPG ICRMP for “Inadvertent Discovery of Archaeological Deposits”

OVERVIEW

Archaeological investigation methods are designed to discover material evidence of past cultural activities. It is possible; however, that buried archaeological deposits may remain undetected during the survey process, only to be exposed by later construction or other ground-disturbing activities.

POLICY

In the event that archaeological deposits are encountered during any construction or excavation activities, the activity shall stop and the YPG Cultural Resources Manager shall be notified. Because of the potential of each archaeological deposit to contain Native American human remains or cultural materials, failure to report discovery of archaeological deposits may result in violation of NAGPRA, ARPA, and other related federal and state laws resulting in fines and penalties against YPG and its Commander. If it is determined that human remains encountered during a project appear to be the victim of a recent crime or accidental death, the appropriate law enforcement authorities will be notified for further action.

PROCEDURES

This Standard Operating Procedure applies to any and all instances of post review discoveries, including: post review discovery of a cultural resource not previously identified in project review and after project approval and initiation; post review discovery of an effect not previously identified in project review and after project approval and initiation; or post review discovery of an effect willfully inflicted on identified historic property after project approval and initiation. Procedures in this SOP match those in the USAG YPG Programmatic Agreement (PA) with the SHPO and ACHP. In the event of a post review discovery, the CRM, under the authority of the Garrison Manager, can halt an undertaking until consultation under the PA has concluded. If the discovery is made as part of an ongoing contracting effort at YPG, the discovery must be reported immediately to the Contracting Officer, who has the authority to halt an undertaking. The Contracting Officer must notify the CRM within 24 hours.

- (1) Post review discovery of a cultural resource not previously identified in project review and after project approval and initiation. In the event cultural resource(s) are discovered in the implementation of a previously approved undertaking, the individual making the discovery shall notify the CRM within 24 hours.
 - (a) The CRM shall ensure that all work ceases in the immediate vicinity (within an approximate 20 meter radius) to protect the newly identified cultural resource(s) within 48 hours of the discovery. The cease-work area shall be marked with flags or visibility tape to clearly delineate the boundaries as appropriate.
 - (b) The CRM shall determine if the cultural resource(s) is/are eligible to the NRHP and notify the SHPO of the determination via phone within 72 hours of the discovery. If the SHPO concurs on non-eligibility of the cultural resource, USAG YPG has no further obligations under Stipulation V of the PA.
 - (c) If the cultural resource is determined to be a historic property, in consultation with the SHPO, the CRM shall prepare and send a notification package to the SHPO and Tribes including a summary of the undertaking and how it was previously reviewed under the PA, an illustration of the cease-work area, a list of identified historic properties within the cease-work area, and the treatment plan to address effects within four days of the SHPO's concurrence on NRHP eligibility.
 - (i) The Tribes are under no obligation to provide comments on the post review discovery; however, if they wish USAG YPG to consider their comments, Tribes should submit comments in writing within two days of receipt. If no comments are received within that time, the CRM shall make a second attempt to contact the Tribes for comments. USAG YPG shall take any tribal comments received into consideration and will notify the SHPO of any tribal concerns and the USAG YPG response to those concerns.
 - (ii) SHPO shall provide a response to USAG YPG regarding the post review discovery within two days of receipt of all pertinent documentation. If no comments are received within that time, the CRM shall make a second attempt to contact the SHPO for comments.

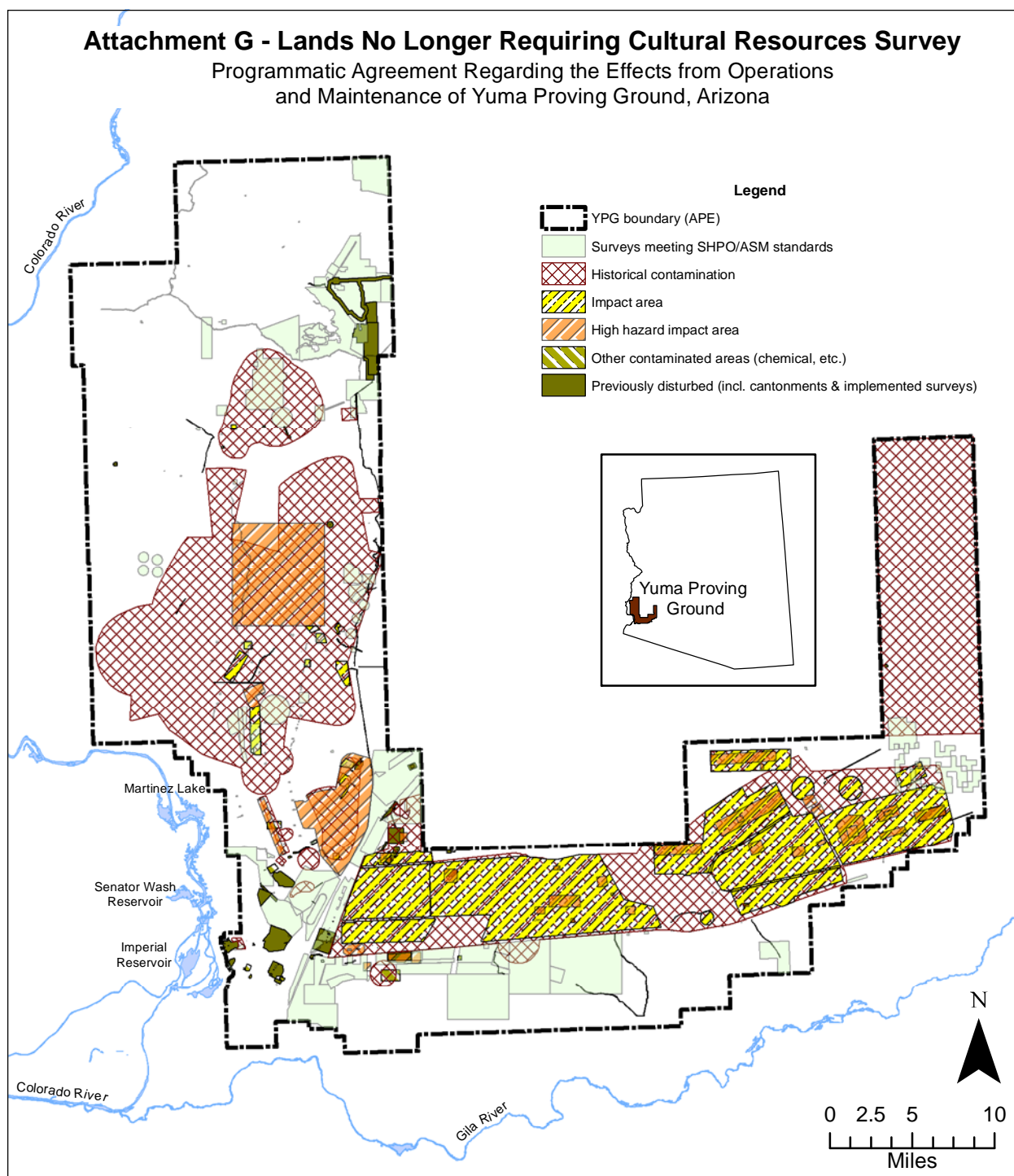
**Standard Operating Procedure #5 of the USAG YPG ICRMP for
“Inadvertent Discovery of Archaeological Deposits”**

- (d) USAG YPG shall include an after action report regarding the post review discovery treatment plan in the Annual Report.
- (2) Post review discovery of an effect not previously identified in project review and after project approval and initiation.
 - (a) In the event effects to historic properties are discovered in the implementation of a previously approved undertaking, the individual making the discovery shall notify the CRM within 24 hours.
 - (b) The CRM shall ensure that all work ceases in the immediate vicinity (within an approximate 20 meter radius) to protect the newly identified historic properties within 48 hours of the discovery. The cease-work area shall be marked with flags or visibility tape to clearly delineate the boundaries as appropriate.
 - (c) The CRM shall determine if the effect is adverse and notify the SHPO of the determination via phone within 72 hours of the discovery. If the SHPO concurs with a no adverse effect finding, USAG YPG has no further obligations under Stipulation V of the PA.
 - (d) If the effect is determined to be adverse, in consultation with the SHPO, the CRM shall prepare and send a notification package for the SHPO and Tribes including a summary of the undertaking and how it was previously reviewed under the PA, an illustration of the cease-work area, a list of identified historic properties within the cease-work area, and the treatment plan to address effects within four days of the discovery.
 - (i) The Tribes are under no obligation to provide comments on the post review discovery; however, if they wish USAG YPG to consider their comments, Tribes should submit comments in writing within two days of receipt. If no comments are received within that time, the CRM shall make a second attempt to contact the Tribes for comments. USAG YPG shall take any tribal comments received into consideration and will notify the SHPO of any tribal concerns and the USAG YPG response to those concerns.
 - (ii) SHPO shall provide a response to USAG YPG regarding the post review discovery within two days of receipt of all pertinent documentation. If no comments are received within that time, the CRM shall make a second attempt to contact the SHPO for comments.
 - (e) USAG YPG shall include an after action report regarding the post review discovery treatment plan in the Annual Report of the PA.
- (3) Post review discovery of an effect willfully inflicted on identified historic property.
 - (a) Violators will be directed to stop the activity and shall result in referral to the County Sheriff and/or to the Garrison Manager. Situations involving damage to archaeological sites will be referred to the proper enforcement agency via the U.S. Army Criminal Investigation Command in accordance with the Archaeological Resources Protection Act.

SYNOPSIS

The following synopsis of this SOP shall be made known on all proposed actions and YPG Digging Permit Approval forms:

Archaeological methods may not detect all buried cultural remains. If archaeological materials or human remains are encountered during construction, the Garrison Manager (phone 928-328-3474) and the Cultural Resources Manager (928-328-2520) or Archaeologists (928-328-4811 or -2721) should be notified immediately by telephone and then in writing. All construction activity will cease immediately within 65 feet (20 meters) of the discovery. Failure to comply will be a violation of the National Historic Preservation Act, the Archaeological Resources Protection Act and/or the Native American Graves Protection and Repatriation Act and other federal laws.



Exempted Undertakings

The categories of undertakings listed below have been determined by USAG YPG, the SHPO, and the ACHP to meet the criteria for exemption; i.e., they qualify as undertakings, but will have no effect on historic properties, or their potential effects will not be adverse. An undertaking of one or more of the types listed below will not require further Section 106 review with SHPO, so long as the undertaking is limited to the types listed below, and is not a part of another undertaking. In addition, if at any time in the course of the undertaking information becomes available that would make this procedure inapplicable, including but not limited to the discovery of historic properties or human remains, Section 106 review or NAGPRA protocol shall be initiated by USAG YPG in accordance with Stipulation V or VI of this PA.

1. General Projects

- a. Removal or in-place disposal of unexploded ordnance.
- b. Disposal of ordnance in existing open burning/open detonation units.
- c. Emergency response to releases of potentially hazardous substances, pollutants, and contaminants that pose a threat to human health and safety.
- d. Activities required and regulated by the Arizona Department of Environmental Quality under the Resource Conservation and Recovery Act (RCRA) or the Defense Environmental Restoration (Army) (DERA) program. These include background research, geophysical characterization, and remediation of Solid Waste Management Units (SMWUs), Military Munitions Response Program (MMRP) sites, Comprehensive Environmental Response, Compensation, and Liability Act (CERCLA) sites. Associated activities such as installation of monitoring equipment will be subject to Section 106 review.
- e. Operations within current permitted landfills and borrow pits.
- f. Operations within current permitted borrow pits.
- g. Installation of stormwater sampling equipment in active washes.
- h. Continued use of small arms impact areas for small arms range activities.
- i. Continued use of dedicated impact areas for routine military weapons testing and training activities.
- j. Routine maintenance of existing non-historic improved or unimproved roads or tank trails where ground disturbance is limited to existing previously maintained road and shoulder.
- k. Routine maintenance of non-historic ditches, culverts or other rainwater conveyance structures.
- l. Studies, data collection, and monitoring for non-cultural resources purposes, provided there is no ground disturbance.
- m. Installation and operation of above-ground and buried utility and communication systems such as fiber optics, natural gas, and single pole electric lines in existing previously disturbed USAG YPG rights-of-way, easements, distribution systems, or facilities.
- n. Removal of dead, diseased, or damaged ornamental trees and shrubs, and trees and shrubs in the cantonment areas.
- o. Use of existing roads, test courses, gun positions, and test sites for routine test activities where operations are limited to existing facilities.
- p. Outdoor recreation programs such as hunting, in accordance with USAG YPG and Army regulations, and State of Arizona laws, when there will be no ground disturbance, including no off-road vehicle use.
- q. Treatment for insect infested plants and invasive species in areas that have been previously surveyed and contain no historic properties or where historic properties can be avoided.

2. Historic Districts

- a. In-kind repair/replacement of existing site improvements, including, but not limited to roads, parking areas, fences, recreation equipment, and signs.
- b. Repair or replacement of existing water, electric, gas, sanitary, cable, and underground or aboveground utilities, within the previously disturbed area with no new ground disturbance.

Exempted Undertakings

- c. Grounds maintenance activities associated with installing, removing, and maintaining landscaping (mowing, trimming, planting, and weed/pest control).
- d. Removal of animals, birds, insects, and their associated debris when no damage to historic materials will result.
- e. Installation of facilities to provide access to historic properties by disabled persons provided the alterations are architecturally compatible with the facility, are freestanding, and do not damage nor require removal of historic materials.
- f. Disturbance in an area less than one square meter, such as placement of fence posts.
- g. Installation of perimeter security fencing and gates provided the design is architecturally compatible and does not require removal of historical materials.
- h. Maintenance, removal, and replacement in kind of existing landscape and plant materials when keeping with the historic character when they are dead, dying, diseased (unsalvageable), and/or pose an imminent hazard to people or structures.

3. Maintenance, Repair, Renovation, Replacement, New Construction, and Demolition Operations

- a. New construction of buildings and other above and below ground infrastructure and related activities in areas that have been previously surveyed and found to have no historic properties present.
- b. Maintenance, repair, and related activities on existing facilities and infrastructure not greater than 45 years old and on those facilities older than 45 years of age but previously determined not eligible for the NRHP in consultation with SHPO.
- c. Renovation of existing buildings and infrastructure not greater than 45 years old or older than 45 years of age but previously determined not eligible for the NRHP in consultation with SHPO.
- d. Demolition of buildings and other infrastructure not greater than 45 years old or older than 45 years of age but previously determined not eligible for the NRHP in consultation with SHPO.
- e. Maintenance, repair, or replacement of existing above-ground and buried utility and communication systems in previously disturbed rights-of-way, easements, or distribution systems, or in facilities where the structures are not greater than 45 years old or have previously been determined not eligible for the NRHP in consultation with SHPO.
- f. Stockpiling and staging of construction, road repair, and paving materials in surveyed areas with no historic properties present.
- g. Natural resources management activities in previously disturbed areas including tree plantings, planting and maintenance of wildlife food and shrub plots, and installation or maintenance of water guzzlers in previously disturbed areas, and improvement of existing dry stream crossings where the depth of the undertaking will not exceed the current disturbance and/or will not impact an intact soil layer that has the potential to contain cultural materials.

4. Grounds and Land Maintenance

- a. Installation, maintenance, and repair of recreational structures and equipment in areas that have been previously surveyed and found to have no historic properties present.
- b. Ground disturbing activities to control, prevent, or repair soil erosion due to rain runoff in areas that have been previously surveyed and found to have no historic properties present.
- c. Grounds maintenance activities associated with installation, removal, and maintenance of landscaping (mowing, trimming, planting, rock hardening, prescribed burning, and weed/pest control).
- d. Routine repair and maintenance of airfields and associated equipment.
- e. Construction of improved roads and tank trails where ground disturbance is contained to existing USAG YPG rights-of-way or previously disturbed areas.